

# CALIFORNIA AUTHORITY OF RACING FAIRS

MANAGEMENT SERVICES  
PARI-MUTUEL DISTRIBUTIONS  
PROJECT FUNDING

## TEN-YEAR REPORT 2000-2009 SATELLITE WAGERING AT FAIRS



NOVEMBER 2010  
PREPARED BY CALIFORNIA AUTHORITY OF RACING FAIRS  
CHRISTOPHER KORBY, EXECUTIVE DIRECTOR







*a California joint powers agency*

1776 Tribute Road, Suite 150  
Sacramento, CA 95815  
Office: 916.927.7223 Fax: 916.263.3341  
www.calfairs.com

## **Introduction**

The California Authority of Racing Fairs is pleased to issue this ten-year retrospective Report summarizing the services, programs and funding provided in support of the California Fairs' satellite network. The Report also details pari-mutuel commission revenues generated for member Fairs from the satellite network, a revenue source directly supported by CARF services, programs and funding. Programs, funding and revenues generated are shown Fair-by-Fair and year-by-year for the ten-year period 2000-2009; cumulative figures are also shown for that same time period.

CARF was actively engaged in the initial implementation of satellite wagering at California Fairs, beginning in the late 1980's. In the earliest phase of implementation, we converted Grandstands and exhibit buildings into satellite facilities. This created a revenue stream that helped fund the next phase of implementation: construction of purpose-built satellite facilities built from the ground up. CARF worked with CDFA F&E in the initial phase, adding CCA to the partnership in the early 1990's. In all, we created satellite facilities at twenty-three California Fairs; we actually built two at some Fairs as the initial building conversion was replaced by a purpose-built satellite facility. Since its inception, the Fairs' satellite network has generated hundreds of millions of dollars in revenues to both the racing industry and the Fair industry.

After the initial implementation phase, CARF created programs and secured funding to provide continuing maintenance, support and improvements to the Fair satellite network. The CARF Equipment Replacement Fund (ERF) was an early manifestation of this type of program. The Fund provided a structured mechanism for maintenance, repair and replacement of technical systems required to maintain reliable, state-of-the-art facilities in the network. At first, the Fund was operated by CARF as a classic sinking fund, funded through voluntary assessments to member Fairs. When CARF was able to secure funding through an agreement with F&E, member Fairs were able to re-direct the ERF assessments to other satellite facility improvements.

Other CARF programs and funding have demonstrated on-going support for the Fairs' satellite network, which is in turn a very important source of revenue for California Fairs. Technical innovations, such as the InfoText system, enhanced the volume, presentation and quality of information available to our patrons. The CARF Facility Improvements Program has directed significant funding and delivered projects that have helped keep our satellite facilities reliably functional and attractive to fans.

CARF also plays an important role as advocate and representative organization with regulators, the racing industry and the California legislature. We work hard to keep a cooperative spirit with the industry in every forum while keeping the interest of our member Fairs paramount.

The satellite network built and operated by California Fairs is one of the largest pari-mutuel operations in the country. It has generated hundreds of millions of dollars to the racing industry and to the California Fair industry. Fairs can justifiably be proud of this accomplishment.

We hope that you will find this Report useful and informative.

Best regards,

Christopher Korby  
Executive Director



# TABLE OF CONTENTS

## I. SATELLITE WAGERING AT FAIRS BACKGROUND

- i. Timeline of Fair SWF Openings
- ii. Organizations Related to Horse Racing and Satellite Wagering
- iii. Duties & Responsibilities of Simulcast Organizations
- iv. Duties & Responsibilities of Satellite Facility
- v. Pari-Mutuel Distributions

## II. 2009 DISTRIBUTIONS FOR SATELLITE FACILITIES LOCATED AT FAIRGROUNDS

## III. COMMISSIONS & PROJECT FUNDING PAID THROUGH CARF TO FAIR SATELLITE WAGERING FACILITIES

- |                  |                  |
|------------------|------------------|
| - Anderson       | - San Mateo      |
| - Bakersfield    | - Santa Barbara  |
| - Del Mar        | - Santa Maria    |
| - Eureka         | - Santa Rosa     |
| - Fresno         | - Shalimar/Indio |
| - Lake Perris    | - Stockton       |
| - Lancaster      | - Tulare         |
| - Monterey       | - Turlock        |
| - Pleasanton     | - Vallejo        |
| - Sacramento     | - Ventura        |
| - San Bernardino | - Victorville    |

## IV. APPENDIX - California Fair Satellite Network Distributions



## SATELLITE WAGERING AT CALIFORNIA FAIRS BACKGROUND

The history of horseracing in California reflects a long-standing association with Fairs. Early, organized racing began in Stockton and Sacramento in the late 1840's during the days of the Gold Rush. The racetrack in Pleasanton has operated continuously since 1856, at first in private hands, later as a Fair. The breeding and training of fine racehorses are aspects of the agricultural economy. Just as cattle are bred for meat and milk production, or sheep for wool production, racehorses are bred and trained for speed and stamina. It's natural that racing competition, along with other livestock competition, would be conducted at the local or regional agricultural expositions.

Horseracing Law, in its opening chapter, Business and Professions Code, Article 1, Section 19401, states the legislative intent that parimutuel wagering on horse racing should support Fairs.

19401. The intent of this chapter is to allow parimutuel wagering on horse races, while:
- Assuring protection of the public.
  - Encouraging agriculture and the breeding of horses in this state.
  - Providing for maximum expansion of horse racing opportunities in the public interest.
  - Providing uniformity of regulation for each type of horse racing.

The marriage of Fairs and horseracing has deep roots in California political history. Modern parimutuel wagering began in 1933 with the direct intention of generating revenue for the State, for Fairs (through Fairs & Expositions fund) and for the continued support of horseracing. In 1987, legislation carried by Senator Ken Maddy, SB14, expanded parimutuel wagering in California by creating a statewide satellite wagering network. Under the provisions of SB14 and subsequent legislation, Fairs and existing racetracks are the venues for off-track wagering. More recently, federal courts

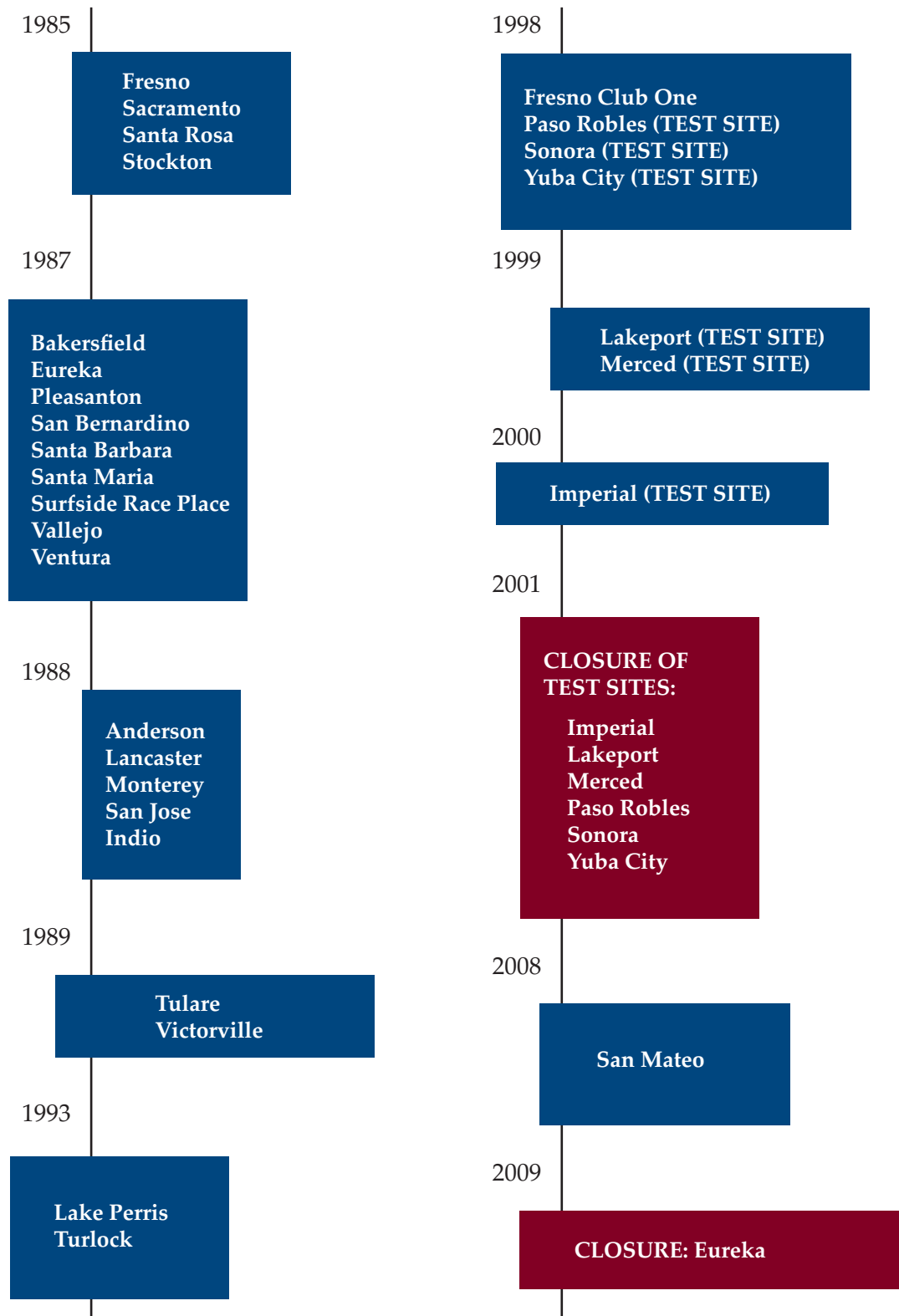
have ruled that certain Native American tribes may operate Satellite Wagering Facilities. Twenty-three Fairs and five racetracks are currently licensed to conduct satellite wagering.

As a consequence of this expansion, the revenue to Fairs from horseracing has increased significantly. Fairs have benefited in two ways from these developments: 1) Fairs that conduct satellite wagering benefit directly from the conducting parimutuel wagering themselves at their Fairs; 2) Fairs which conduct live racing benefit from this exciting traditional event at their Fairs and from the revenues which it generates.



Steward's Stand at the California  
State Fair, 1891.

# TIMELINE OF FAIR SATELLITE NETWORK OPENINGS 1985-2009





# ORGANIZATIONS RELATED TO HORSE RACING AND SATELLITE WAGERING



## **CALIFORNIA AUTHORITY OF RACING FAIRS (CARF)**

CARF represents its member Fairs in matters that relate to horse racing and satellite wagering. CARF's seven-member Board of Directors is elected by its membership from amongst member Fairs. On behalf of those Fairs that conduct live racing, CARF negotiates joint contracts, manages contractors and vendors, prepares and submits license applications, and manages Host Track simulcast operations. On behalf of its member Fairs conducting satellite wagering, CARF prepares license applications and provides administrative, procedural, and technical support. Contracts between Fairs and simulcast organizations relating to satellite wagering are negotiated by and through CARF. CARF formulates and represents advocacy positions on legislative matters on behalf of member Fairs.



## **CALIFORNIA HORSE RACING BOARD (CHRB)**

The CHRB has regulatory oversight of horse racing in California. Its seven commissioners are appointed by the Governor. The Board hires an Executive Director who administers Staff regulatory functions, including licensing, audits, and investigations. Racing associations, satellite wagering facilities, and personnel must be licensed by the CHRB.

## **RACING ASSOCIATIONS**

Racing associations, with the exception of the Racing Fairs, are private organizations, operated for profit, licensed by the state to conduct horse racing. They may be constituted as partnerships, corporations, or real-estate investment trusts. Private racing associations in California, with the exception of Del Mar and Oak Tree, own the venues at which they operate. Racing Fairs, which are publicly-owned racing associations, conduct horse racing to generate revenues which support general Fair activities. Every racing association is allowed, and those above a certain size are required, to simulcast their races.

## **HORSEMEN'S ORGANIZATIONS**

The horsemen are the owners and trainers of the horses that compete at racing meetings conducted by the racing associations. Horsemen share equally with racing associations in the division of simulcast revenue and expenses. Revenue to horsemen is distributed in the form of purses to winning horses. Each horse racing breed (Thoroughbred, Quarter Horse, Standardbred, Appaloosa, etc.) has a recognized association authorized to negotiate and contract on behalf of its members. Thoroughbred owners are represented by the Thoroughbred Owners of California (TOC); Thoroughbred trainers are represented by California Thoroughbred Trainers (CTT); Standardbred (harness) horsemen by the California Harness Association (CHA); quarter horses by Pacific Coast Quarter Horsemen's Association (PCQHA); Arabians by ARAC; Appaloosas by Cal Western Appaloosa Racing Association; mules by American Mule Racing Association (AMRA).

## **SIMULCAST ORGANIZATIONS:**

### **NCOTWInc. and SCOTWInc.**

The original enabling legislation for simulcasting, SB14, provided that the racing associations, the Fairs and the horsemen may form an organization to oversee and administer simulcast activities. Two such organizations have been formed: Northern California Off-Track Wagering Inc. (NCOTWInc.) and Southern California Off-Track Wagering Inc. (SCOTWInc.). See further description below. They are responsible for totalisator (specialized computer wagering system) services, satellite transmission, pari-mutuel clerks, banking, and accounting. Statute requires that satellite wagering Fairs have a contract, approved by the CHRB, with the appropriate regional simulcast operator.

### **NCOTWInc.**

Northern California Off-Track Wagering Inc., oversees the administration of simulcast operations in Northern California. Its members are California Authority of Racing Fairs (CARF), horsemen (TOC), and Golden Gate Fields. NCOTWInc sets policy, manages contracts for conduct of pari-mutuel wagering and employs pari-mutuel personnel at off-track simulcast facilities.

### **SCOTWInc.**

SCOTWInc. is the simulcast organization set up under provisions of SB14 in Southern California. Its members are racing associations, a racing Fair, satellite Fairs, and each horsemen's association. SCOTWInc. is a limited partnership with a corporation as the general partner. SCOTWInc. administers simulcast operations through its own staff and contracted services. Contracts covering satellite wagering Fairs are made directly with SCOTWInc.

# DUTIES AND RESPONSIBILITIES OF SIMULCAST ORGANIZATIONS

Satellite wagering operations fall into two categories:

- 1) Operations provided and paid for by the simulcast organization
- 2) Operations provided and paid for by the Satellite Facility.

Duties and responsibilities of the simulcast organization are described below.

## DUTIES AND RESPONSIBILITIES OF THE SIMULCAST ORGANIZATIONS

The simulcast organization provides and pays for audiovisual signal transmission and all pari-mutuel costs, including pari-mutuel employees on-site at satellite facilities. To cover these costs, it receives a percentage of the off-track handle.

## PARI-MUTUEL PERSONNEL AND OPERATIONS

Pari-mutuel personnel handle operations directly related to processing wagers. These operations include provision of clerks to operate wagering terminals, money room and supervisory staff, and administrative support at the Host Track. The Host Track Mutuels Manager assigns the clerks and supervisor at each site. The local supervisor is also the Money Room attendant and has responsibility for the cash bank on-site. All pari-mutuel clerks in California are union members and belong to the Pari-mutuel Clerks Guild Local 280 SEIU. The simulcast organization is also responsible for banking, armored service, currency counting machines, payroll, and audit.

## TOTALISATOR

The Totalisator is a computerized data processing operation that tabulates wagering pools, issues bet tickets, and calculates payoffs. The system extends from cash register-like terminals at each wagering location, through a high-speed data communications system to a central data processing hub. All wagers are processed identically; a wager at any satellite location is tabulated into the same pools as wagers at the Host Track. Totalisator services include technical operations and maintenance personnel.

## DATA PROCESSING HUB

The wagering data processed by the totalisator computers is transmitted back and forth between the hub and satellite sites via specially dedicated telephone data lines. These special high-speed circuits run directly from each site to the central computer. The system must operate fast enough so that entry of a wager at the satellite site, relay of that wager to the central computer, tabulation, and issuance of the bet ticket hundreds of miles away takes less than one second.

## SATELLITE UPLINK; ENCRYPTION; SATELLITE TRANSPONDER

Four primary elements constitute the audiovisual transmission system. These are 1) satellite uplink, 2) encryption (scrambling), 3) satellite transponder, and 4) satellite downlink and closed circuit television system. The satellite downlink and closed circuit television system are the responsibility of the Fair and will be discussed below. The other three elements are the responsibility of the simulcast organization. Here is a brief description of these services.

The **satellite uplink** is an earth transmitting station that beams a television signal from the Racetrack to a telecommunications satellite in orbit over the equator. The uplink sends a signal supplied by a television production facility at the track.

**Encryption** is the technical term for electronically scrambling a communications signal. The audiovisual television signal is scrambled to prevent recognizable reception by unauthorized users. A special code that authorizes decoders to reconstitute the signal into recognizable form is carried directly on the scrambled signal. Unlike most residential scrambling systems, this system can turn decoders on and off immediately.

The telecommunications **satellite** parked over the equator functions as a distant relay station. Signals beamed to it are amplified and retransmitted back to a wide coverage area on earth. Users rent or lease time on these satellites as needed. As satellite distribution of live racing has expanded, the horse racing industry has become a major purchaser of satellite time.



Artists rendering of the Alameda County Fair  
Satellite Wagering Facility



# DUTIES AND RESPONSIBILITIES OF THE SATELLITE FACILITY

## DUTIES AND RESPONSIBILITIES OF THE SATELLITE FACILITY

Satellite wagering is probably one of the Fair's most profitable interim events. The Fair must take care that planning for its implementation includes an assessment of its impact on all other Fair activities. The receiving site (Fair or Racetrack) provides and pays for audiovisual receiving equipment, physical facilities, and all non-parimutuel personnel. The Fair Satellite Facility pays the cost of these operating expenses from its commission on pari-mutuel handle and from revenue generated by admissions, parking, concessions, and other miscellaneous sources. Careful planning with CARF and F&E must precede implementation. A more detailed description of these responsibilities follows.

## PHYSICAL FACILITIES; PERSONNEL

After a Fair satellite opens, the Fair is responsible for providing and maintaining the physical facilities for satellite wagering operations. This includes buildings, utilities, parking, safe ingress and egress, outdoor lighting, signage, and fencing. It is important that the Fair maintain a good facility. The Fair may charge for parking and for admission; typical prices are \$1 or \$2 for parking, and \$2 or \$3 for admission, perhaps with a higher admission for upgrade to an area of finer amenities. Important considerations in facility operations include ease of access, good HVAC and proper lighting. Outdoor lighting in the parking lot and over walkways to the Satellite Facility is important for night operation. Organization of outdoor operations, such as parking and admissions money collection, must include provisions for year-round weather conditions, crowd control, and security. Provisions must be made for two money counting rooms: one, controlled by the Fair, for cash receipts from parking, admissions, program sales, and miscellaneous sales; the other, controlled by the pari-mutuel department, for cash necessary to conduct wagering operations. The level of security for the Fair operations Money Room determined in cooperation with NCOTWInc./SCOTWInc. The pari-mutuel Money Room must be secured by an alarm system that connects directly to a local law enforcement agency or to an alarm company with a 24-hour dispatcher. Security guards must be on duty at all times that wagering is conducted.

## SATELLITE RECEIVING AND AUDIOVISUAL SYSTEMS

Statute stipulates that the Fair is responsible for provision of the satellite downlink and closed circuit TV system. CARF and F&E provide these systems at no initial cost to the Fair. CARF maintains an Equipment Replacement Fund which periodically replaces equipment based on equipment value and projected lifetime.

## EMERGENCY MEDICAL SERVICES

First Aid and medical emergency services must be maintained at all times with private services or local public emergency response teams.

## FOOD AND BEVERAGE SERVICE

Food and drink concessions represent an important element of service provided to satellite patrons. Careful selection of an appropriate vendor should guide this decision. Fairs should consult with CARF to assure that the concessionaire meets standards expected by the CHRB. Ongoing management and monitoring are important Fair management responsibilities.

## EMPLOYEES

All personnel in the satellite wagering operation outside the Pari-mutuel Department are Fair employees. As noted above, the CHRB licenses all personnel. Facility Supervisory personnel must pass a test as part of their licensing requirements. Fair management must provide staff adequate to operate two shifts daily, day and night, six days a week. Job categories include the following:

- Facility Supervisor
  - Assistant Supervisor
  - Admissions seller
  - Parking attendants
  - Program seller
  - Security Captain
  - Security Guards
  - Janitorial
  - Unskilled Labor
- ) Tested and Licensed by  
F&E and the CHRB

## ACCOUNTING AND RECORD KEEPING

Operating expenses, with the exception of pari-mutuel operations, are the responsibility of the Fair. The Fair must keep careful records of its operating cost per performance, that is, separately, for day racing, for night racing, and by breed. Daytime racing (thoroughbred) is nearly always profitable. Occasionally the less popular night events will operate at a loss. When this is the case, the racing association must, by law, make up the difference. Statute specifies that a facility need not operate at a loss; hence the importance of accurate records. A Fair must accept all signals offered to it, even if it incurs operating losses, as long as the racing association pledges to make up any differences. This pledge is generally secured by a bond.

**The overall health of the horse racing industry is dependant on a strong satellite network. Racing organizations and industry leaders depend on the Fairs to build, maintain and preserve facilities that will be attractive and comfortable for patrons.**

# PARI-MUTUEL DISTRIBUTIONS

## PARI-MUTUEL DISTRIBUTIONS

Revenue generation is one of the principal reasons for the conduct of pari-mutuel wagering on horse racing. This revenue flows to a wide spectrum of statutory beneficiaries. The Legislature determines the division of those revenues; that division is sometimes a matter of political debate.

Commissions from pari-mutuel handle are apportioned to the various beneficiaries according to a schedule that includes region (Northern California or Southern California racing), breed of horses (thoroughbred, quarter horse, etc.), type of wager and whether the handle is generated on-track or off-track.

“Conventional” handle means Win, Place, and Show wagers; “Exotic” means Exacta, Daily Double, Triple, Pick Six, etc.

The following categories describe division of the satellite pari-mutuel handle for Northern California thoroughbreds. Distributions for other breeds and regions are similar.

Returned to Winning Bettors (conventional) 84%; (exotic) 79%  
Other Pari-mutuel Distributions (conventional) 16%; (exotic) 21%

- Racetrack Commissions
- Purses (Horsemen)
- State License Fee
- Simulcast Operator (Expenses)
- Satellite Facility
- Promotion (California Marketing Committee)
- Breeders' Awards
- Stabling & Vanning
- Local Government
- Equine Research (UC Davis)

## RETURNED TO WINNING BETTORS

All money wagered on losing horses is divided up for payment to the winning bettors and other beneficiaries. Winning bettors receive the largest portion of pari-mutuel distributions.

## RACING ASSOCIATIONS

All racing associations operate to make a profit. Part of their income is derived from commissions on pari-mutuel handle. The association commission is equivalent to the Purses', or Horsemen's, commission.

## PURSES PAID TO HORSEMEN

The distribution for payment of purses is racing's mechanism of self-sustenance. A percentage of the handle, equivalent to the commission paid the racing association, flows back to the owners of winning horses. Purses are normally paid, in diminishing percentages, based on the order of the horses finishing the race. Associations may supplement the purses from time to time, but the primary source of purse money derives from a portion of the handle.

## DISTRIBUTION FOR SIMULCAST EXPENSES

(Paid to Simulcast Organization)

This distribution is used for payment of satellite wagering expenses such as satellite transmission, totalisator, and off-track pari-mutuel labor. Any portion of this fund left unspent after expenses are paid is divided equally between the horsemen and the association.

## COMMISSION TO SATELLITE FACILITY: 2% LOCATION FEE

Each satellite wagering facility receives 2% of the handle generated from its operation. In the pari-mutuel reports, this is known as a location fee. This constitutes approximately half of a satellite's gross operating revenue. Admissions, parking, and concessions constitute the other half.

## DISTRIBUTION FOR PROMOTION

(Paid to California Marketing Committee)

A proportion of handle flows to a fund used for promotion of horse racing and satellite wagering. This money is administered by the California Marketing Committee (CMC). Fair satellite facilities receive an allocation for marketing and promotion from this fund. CARF coordinates marketing plans and budgets with individual Fairs and with the CMC.

## BREEDERS' AWARDS

This portion goes to breeders of winning horses as an incentive to successful operations and for financial support of California's Thoroughbred breeding industry.

## STABLING AND VANNING FUND

This fund helps pay the expenses of keeping and transporting horses. It helps insure the long-term vitality of the racing economy by off-setting the high cost of stabling and moving fine competitive racehorses.

## LOCAL GOVERNMENT

Local government may receive 0.33% of handle generated at each satellite location. This typically goes to the municipality or county in which the facility is located or to a combination of both. At Fair satellites, the Fair Board determines which local government entity (city or county) receives the .33 distributions. In the event no determination is made by the Fair Board, the money reverts to the State. The local government must formally request payment; if it does not, the money reverts to the State.

## UC DAVIS EQUINE VETERINARY RESEARCH

The Veterinary School at University of California, Davis has a world-renowned Equine Research Facility. This fund helps sustain that education and research facility.

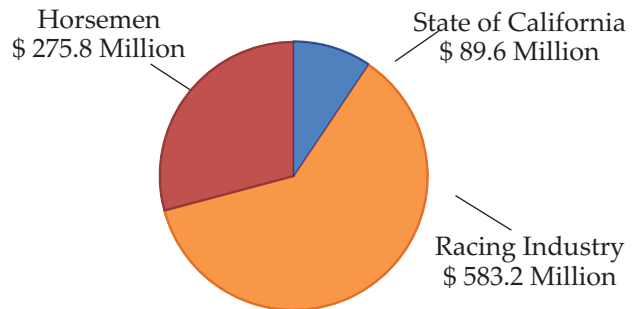
## CONCLUSION

Horse racing and Fairs share a long heritage together. Both provide jobs for thousands of Californians; both are important to California's agricultural economy. This long-standing relationship has proven mutually beneficial to both industries throughout its history.

# FAIR SATELLITE WAGERING FACILITIES HANDLE & DISTRIBUTIONS 2000-2009

**TOTAL FAIR  
SATELLITE HANDLE  
\$4.96 Billion  
2000-2009**

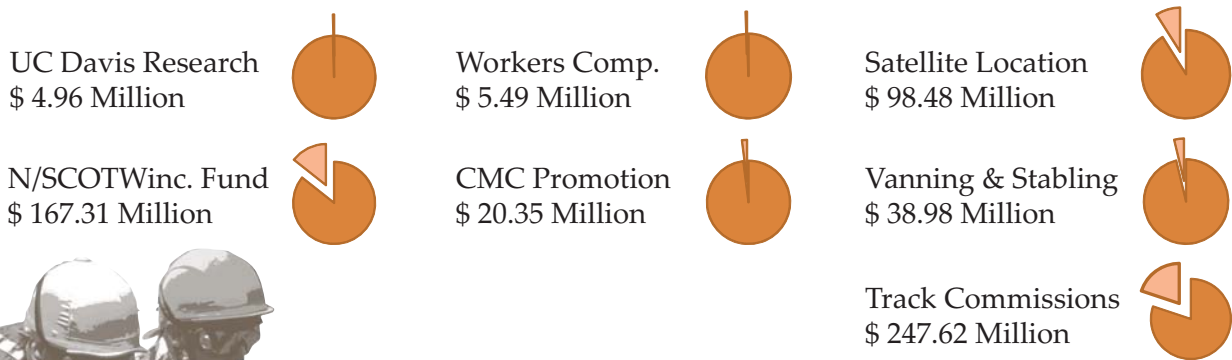
Distributions Generated at  
Fair Satellites  
2000-2009



**STATE OF CALIFORNIA - \$ 89.6 Million**



**RACING INDUSTRY - \$ 583.2 Million**



**HORSEMEN - \$ 275.8 Million**



# PARI-MUTUEL DISTRIBUTIONS REPORT FOR SATELLITE FACILITIES LOCATED AT CALIFORNIA FAIRS 2009

## CHRIMS Detailed Distribution Report

Date Range: 01/01/2009 - 12/31/2009  
Report By: Location

Race Type: All Races  
Location Types: Fairs

Hosts: All Hosts  
Breeds: All Breeds

Locations:  
On/Off:

All Locations  
Off Track

Tracks: All Tracks

Location	Handle	License	CHRB Support Fee	F&E	City & County Tax	NISCO/Win Exp. Fund	UC Davis Equine Research	Satellite Location	Van/Stable Fund	Work Comp.	CMC Promotion	PFAB509	Track Commission	Purses	Owners	Breeders/Sires	To Out of State Tracks	Total Distributions	Attendance
Anderson	2,128,019	14,820	4,233	1,969	6,931	76,934	2,129	42,007	24,961	3,649	8,421	0	102,436	101,932	1,477	11,062	23,609	432,569	7,584
Bakersfield	8,360,729	53,076	13,956	5,716	27,333	341,094	8,361	165,655	77,002	16,891	34,871	1,715	413,816	416,968	4,530	44,694	96,864	1,722,344	40,571
Eureka	1,453,789	14,009	1,498	1,151	4,745	51,940	1,454	28,755	17,244	2,097	5,752	0	64,010	64,036	1,017	7,538	22,356	287,600	2,724
Ferrdale	173,374	0	400	381	572	10,402	173	3,467	2,071	387	694	0	6,930	6,814	121	847	1,472	34,733	0
Fresno	7,702,848	51,941	12,940	6,006	25,137	299,485	7,703	152,346	77,152	14,989	31,558	1,271	373,057	374,273	4,558	40,509	104,250	1,577,175	35,446
Fresno Club One	3,480,570	20,253	6,865	2,930	11,405	138,264	3,481	69,119	34,034	6,950	14,375	971	173,068	174,204	2,002	18,116	43,879	719,917	5,723
Lake Perris	15,777,120	155,589	52,521	13,014	51,811	497,893	15,778	314,006	164,754	33,368	65,184	1,916	785,928	784,673	9,231	86,348	152,058	3,186,083	75,290
Lancaster	15,961,793	151,486	51,516	12,906	52,502	521,031	15,962	318,198	160,530	33,677	66,481	3,169	817,492	818,071	8,994	88,339	174,222	3,294,616	77,384
Monterey	8,009,204	51,734	13,267	4,718	26,183	319,968	8,010	158,685	74,567	14,410	33,292	2,453	1,002,262	409,105	4,410	41,559	114,758	1,683,379	34,881
Pleasanton	41,035,610	256,194	76,998	34,100	134,607	1,611,549	41,036	815,802	414,623	76,197	168,772	8,172	1,992,469	2,001,593	24,411	216,264	511,268	8,384,055	134,989
Pomona	54,506,396	500,602	204,673	42,429	179,187	1,641,279	54,507	1,085,980	576,163	120,487	224,549	11,601	2,809,104	2,802,443	32,265	301,509	549,582	11,136,359	188,170
Sacramento	28,432,047	289,811	51,492	23,164	93,027	1,122,737	28,432	563,796	282,361	55,710	117,361	684	1,285,753	1,300,814	16,688	143,815	367,705	5,636,283	99,140
San Bernardino	30,869,233	299,811	100,548	26,157	101,424	984,582	30,870	614,689	319,744	70,294	127,745	4,542	1,566,124	1,566,611	17,919	168,752	316,423	6,513,234	156,022
San Jose	37,246,210	224,164	66,654	29,192	122,387	1,533,636	37,247	741,740	350,372	72,644	155,419	11,521	1,863,252	1,877,218	20,710	196,894	464,422	7,767,271	144,657
San Mateo County	83,652,961	510,474	162,241	74,190	275,012	3,352,678	83,654	1,666,740	847,848	159,690	344,523	20,999	4,115,403	4,133,318	50,126	444,695	1,030,256	17,761,846	225,658
Santa Barbara	5,219,011	59,540	17,556	5,012	17,049	141,630	5,219	103,328	63,047	10,683	20,787	0	263,548	260,414	3,563	28,414	74,096	1,074,056	16,921
Santa Maria	5,294,805	58,734	19,750	5,080	17,328	138,753	5,295	105,020	65,360	11,052	21,017	105	266,354	262,800	3,632	28,969	61,973	1,071,254	15,125
Santa Rosa	12,059,592	78,512	21,973	9,880	39,323	460,449	12,060	238,318	121,157	23,055	49,274	2,676	583,112	585,991	7,144	64,154	156,346	2,453,423	62,627
Shalimar (Indio)	6,624,910	60,818	19,783	5,013	21,671	183,665	6,625	131,340	78,043	15,411	26,588	44	340,473	337,066	4,373	35,965	76,304	1,363,182	28,577
Stockton	20,109,643	117,017	38,325	18,138	65,999	819,254	20,110	399,994	191,505	39,850	83,697	4,639	995,786	1,002,367	11,339	106,758	243,703	4,158,480	90,003
Surfside Race Place	56,505,784	691,726	148,961	32,108	185,082	1,644,312	56,506	1,121,707	637,980	119,373	228,722	9,131	2,863,347	2,863,347	35,741	305,526	651,622	11,174,429	178,574
Tulare	3,384,271	23,226	6,796	3,320	11,058	123,661	3,385	67,015	39,526	5,569	13,452	108	154,704	154,030	2,324	17,667	45,719	671,560	14,172
Turlock	8,312,838	54,271	17,481	8,397	27,209	309,763	8,313	164,900	96,763	13,787	33,133	324	404,241	402,507	5,727	43,398	122,814	1,713,026	28,876
Vallejo	17,651,053	102,350	32,153	15,088	57,983	737,686	17,652	351,411	164,224	35,328	73,746	6,447	889,887	896,389	9,712	92,211	214,786	3,697,059	73,056
Ventura	27,944,715	269,733	99,006	23,057	91,782	842,824	27,945	556,257	305,361	57,050	114,399	3,359	1,432,078	1,425,079	17,108	153,093	332,365	5,750,497	86,768
Victorville	9,094,338	79,836	29,218	7,533	29,883	308,622	9,095	181,111	87,348	20,303	38,077	2,899	465,311	467,112	4,896	49,467	92,686	1,873,396	57,497
<b>(Total: 27 records)</b>	<b>511,010,861</b>	<b>4,102,644</b>	<b>1,271,003</b>	<b>410,649</b>	<b>1,676,630</b>	<b>18,214,093</b>	<b>511,024</b>	<b>10,161,386</b>	<b>5,273,759</b>	<b>1,034,899</b>	<b>2,101,889</b>	<b>98,766</b>	<b>25,233,945</b>	<b>25,268,427</b>	<b>304,016</b>	<b>2,736,361</b>	<b>6,051,536</b>	<b>104,453,028</b>	<b>1,882,435</b>

**\$511 Million**  
Total Handle

**\$410,000**  
to F&E

**\$10.2 Million**  
in Satellite Commissions

**\$25.3 Million**  
in Purses

**\$104.5 Million**  
in Total Industry Distributions

In 2009, 1,882,435 patrons visited Fair Satellite Wagering Facilities and bet \$511 million, contributing \$104.5 million to the CA racing industry.



# CALIFORNIA AUTHORITY OF RACING FAIRS COMMISSIONS & PROJECT FUNDING

## ALL MEMBER SATELLITE FACILITIES

(1) 2% PARI-MUTUEL COMMISSIONS (LOCATION FEES) PAID TO ALL MEMBER FAIRS  
(2) PROJECT FUNDING PAID THROUGH CARF TO MEMBER FAIRS  
2000-2009

2000		2001		2002	
(1) 2% Commissions	11,012,262	(1) 2% Commissions	11,036,693	(1) 2% Commissions	11,742,021
(2) Project Funding	681,945	(2) Project Funding	1,210,747	(2) Project Funding	576,004
<b>TOTAL</b>	<b>11,694,207</b>	<b>TOTAL</b>	<b>12,247,440</b>	<b>TOTAL</b>	<b>12,318,025</b>

2003		2004		2005	
(1) 2% Commissions	11,858,119	(1) 2% Commissions	11,891,415	(1) 2% Commissions	12,090,629
(2) Project Funding	1,268,982	(2) Project Funding	880,217	(2) Project Funding	929,345
<b>TOTAL</b>	<b>13,127,101</b>	<b>TOTAL</b>	<b>12,771,632</b>	<b>TOTAL</b>	<b>13,019,974</b>

2006		2007		2008	
(1) 2% Commissions	11,955,295	(1) 2% Commissions	11,817,081	(1) 2% Commissions	11,102,043
(2) Project Funding	402,897	(2) Project Funding	331,358	(2) Project Funding	1,849,201
<b>TOTAL</b>	<b>12,358,192</b>	<b>TOTAL</b>	<b>12,148,439</b>	<b>TOTAL</b>	<b>12,951,243</b>

2009		2000-2009	
(1) 2% Commissions	10,931,738	(1) 2% Commissions	115,437,296
(2) Project Funding	268,981	(2) Project Funding	8,399,676
<b>TOTAL</b>	<b>11,200,719</b>	<b>TOTAL</b>	<b>123,836,972</b>

**\$115.4 Million** - Pari-Mutuel Commissions Paid to CARF Member Fairs  
**\$8.4 Million** - Project Funding Paid through CARF to Member Satellites



# CALIFORNIA AUTHORITY OF RACING FAIRS COMMISSIONS & PROJECT FUNDING

## SHASTA DISTRICT FAIR - ANDERSON

(1) 2% PARI-MUTUEL COMMISSIONS (LOCATION FEES) PAID TO SHASTA DISTRICT FAIR

(2) PROJECT FUNDING PAID THROUGH CARF TO SHASTA DISTRICT FAIR

2000-2009

2000		2001		2002	
(1) 2% Commissions	73,605	(1) 2% Commissions	64,550	(1) 2% Commissions	64,626
(2) Project Funding	29,468	(2) Project Funding	1,240	(2) Project Funding	940
<b>TOTAL</b>	<b>103,074</b>	<b>TOTAL</b>	<b>65,790</b>	<b>TOTAL</b>	<b>65,567</b>

2003		2004		2005	
(1) 2% Commissions	69,344	(1) 2% Commissions	73,956	(1) 2% Commissions	75,182
(2) Project Funding	854	(2) Project Funding	12,458	(2) Project Funding	589
<b>TOTAL</b>	<b>70,198</b>	<b>TOTAL</b>	<b>86,415</b>	<b>TOTAL</b>	<b>75,771</b>

2006		2007		2008	
(1) 2% Commissions	71,474	(1) 2% Commissions	69,265	(1) 2% Commissions	61,422
(2) Project Funding	0	(2) Project Funding	675	(2) Project Funding	1,304
<b>TOTAL</b>	<b>71,474</b>	<b>TOTAL</b>	<b>69,940</b>	<b>TOTAL</b>	<b>62,727</b>

2009		2000-2009	
(1) 2% Commissions	55,902	(1) 2% Commissions	679,329
(2) Project Funding	3,416	(2) Project Funding	50,945
<b>TOTAL</b>	<b>59,318</b>	<b>TOTAL</b>	<b>730,274</b>

**\$680,000** Pari-Mutuel  
Commissions Paid to  
Shasta District Fair

**\$51,000** Project Funding  
Paid through CARF to  
Shasta District Fair



# California Authority of Racing Fairs

## Anderson Detailed Distribution Report for Ten Year Comparison

Handle	License Fee	CHRB Support Fee	F&E Fund	City Tax	Equine UC Davis	Workers Comp.	2% Comm. Loc. Fees	N/SCOTW inc. Expense	CMC Promotion	Vanning Stable	PFAB 509	Harness Loc. Fees	Track Comm.	Purses	Owners	Breeders Sires	To Out of State Tracks	Attendance	
2000	3,710,818	42,590	0	3,504	12,145	3,711	0	73,605	124,958	14,724	25,745	0	0	188,739	188,591	2,642	19,264	32,481	15,588
2001	3,259,334	37,393	0	2,904	10,651	3,260	0	64,550	110,723	12,910	22,593	0	0	164,097	163,697	2,319	16,871	31,898	13,937
2002	3,054,124	35,349	0	2,136	9,936	3,055	0	60,218	98,282	12,044	21,826	0	0	154,322	154,536	2,146	15,810	30,789	12,890
2003	3,147,094	35,774	0	2,652	10,285	3,148	0	62,334	105,798	12,472	28,921	0	0	157,252	156,809	2,220	16,294	30,723	12,465
2004	3,280,004	37,467	0	2,504	10,661	3,281	4,392	64,612	107,729	12,868	30,034	0	0	164,887	164,715	2,278	16,816	39,391	11,182
2005	3,165,325	36,122	0	2,182	10,278	3,166	6,487	62,289	100,393	12,211	28,575	5	0	162,976	162,564	2,158	16,033	41,297	9,281
2006	2,928,882	33,513	0	1,848	9,512	2,929	6,048	57,644	92,544	11,553	28,742	0	0	149,543	149,180	2,029	15,164	37,739	8,921
2007	2,779,451	31,996	0	1,748	9,019	2,780	5,547	54,659	87,646	10,947	31,262	0	0	139,011	138,384	1,923	14,385	37,062	8,314
2008	2,404,914	28,015	0	1,272	7,827	2,405	4,634	47,439	78,807	9,502	27,135	0	0	116,895	116,420	1,670	12,434	30,989	8,189
2009	2,128,019	14,820	4,233	1,969	6,931	2,129	3,649	42,007	76,934	8,421	24,961	0	0	102,436	101,932	1,477	11,062	29,609	7,584
<b>TOTAL</b>	<b>29,857,962</b>	<b>333,040</b>	<b>4,233</b>	<b>22,719</b>	<b>97,245</b>	<b>29,864</b>	<b>30,757</b>	<b>589,359</b>	<b>983,814</b>	<b>117,650</b>	<b>269,792</b>	<b>5</b>	<b>0</b>	<b>1,500,157</b>	<b>1,496,827</b>	<b>20,863</b>	<b>154,133</b>	<b>341,978</b>	<b>108,351</b>

# California Authority of Racing Fairs

## Anderson Distribution of 2% Location Fees from Advance Deposit Wagering (ADW)

2% Location Fees (ADW)	2000	2001	2002	2003	2004	2005	2006	2007	2008	2009	TOTAL
	0	0	4,408	7,009	9,345	12,893	13,830	14,606	13,984	13,895	89,970

# California Authority of Racing Fairs

## Cumulative Funding Disbursements to Shasta District Fair (Anderson) SWF 2000-2009

	2000	2001	2002	2003	2004	2005	2006	2007	2008	2009	TOTALS
Infotext Funds	-	-	-	-	-	-	-	-	-	-	-
Equip. Replacement Fund	29,468	1,240	940	854	2,338	589	-	675	1,304	3,416	40,825
SWF upgrades	-	-	-	-	10,120	-	-	-	-	-	10,120
<b>Total Funding</b>	<b>\$29,468</b>	<b>\$1,240</b>	<b>\$940</b>	<b>\$854</b>	<b>\$12,458</b>	<b>\$589</b>	<b>\$0</b>	<b>\$675</b>	<b>\$1,304</b>	<b>\$3,416</b>	<b>\$50,945</b>

# CALIFORNIA AUTHORITY OF RACING FAIRS COMMISSIONS & PROJECT FUNDING

## KERN COUNTY FAIR - BAKERSFIELD

(1) 2% PARI-MUTUEL COMMISSIONS (LOCATION FEES) PAID TO Kern County Fair

(2) PROJECT FUNDING PAID THROUGH CARF TO Kern County Fair

2000-2009

2000		2001		2002	
(1) 2% Commissions	243,699	(1) 2% Commissions	234,802	(1) 2% Commissions	241,858
(2) Project Funding	0	(2) Project Funding	0	(2) Project Funding	0
<b>TOTAL</b>	<b>243,699</b>	<b>TOTAL</b>	<b>234,802</b>	<b>TOTAL</b>	<b>241,858</b>

2003		2004		2005	
(1) 2% Commissions	258,329	(1) 2% Commissions	246,401	(1) 2% Commissions	289,249
(2) Project Funding	400	(2) Project Funding	0	(2) Project Funding	20,885
<b>TOTAL</b>	<b>258,729</b>	<b>TOTAL</b>	<b>246,401</b>	<b>TOTAL</b>	<b>310,134</b>

2006		2007		2008	
(1) 2% Commissions	286,977	(1) 2% Commissions	261,753	(1) 2% Commissions	233,024
(2) Project Funding	3,770	(2) Project Funding	0	(2) Project Funding	329
<b>TOTAL</b>	<b>290,747</b>	<b>TOTAL</b>	<b>261,753</b>	<b>TOTAL</b>	<b>233,353</b>

2009		2000-2009	
(1) 2% Commissions	218,839	(1) 2% Commissions	2,514,929
(2) Project Funding	0	(2) Project Funding	25,385
<b>TOTAL</b>	<b>218,839</b>	<b>TOTAL</b>	<b>2,540,314</b>

**\$2,515,000** Pari-Mutuel  
Commissions Paid to  
Kern County Fair

**\$26,000** Project Funding  
Paid through CARF to  
Kern County Fair





# California Authority of Racing Fairs

## Bakersfield Detailed Distribution Report for Ten Year Comparison

Handle	License Fee	CHRB Support Fee	F&E Fund	City Tax	Equine UC Davis	Workers Comp.	2% Comm. Loc. Fees	N/SCOTW inc. Expense	CMC Promotion	Vanning Stable	PFAB 509	Harness Loc. Fees	Track Comm.	Purses	Owners	Breeders Sires	To Out of State	Attendance
2000	12,255,373	0	7,862	40,210	12,256	0	243,699	486,665	51,727	64,409	0	0	642,524	641,041	6,578	60,286	91,068	65,222
2001	11,818,769	0	6,902	38,743	11,820	0	234,802	472,015	49,907	61,571	0	0	603,751	605,396	6,245	58,056	92,527	60,645
2002	11,369,637	0	6,084	37,207	11,371	0	225,495	451,291	47,978	60,761	0	0	585,958	587,651	5,975	55,683	95,207	60,509
2003	11,676,448	0	7,250	38,280	11,678	0	231,996	465,568	49,102	82,761	0	0	584,871	585,832	6,311	57,468	100,499	55,554
2004	10,693,709	0	6,177	34,933	10,695	13,828	211,715	422,772	44,429	75,409	4,160	0	536,722	537,702	5,675	51,980	106,427	52,009
2005	12,465,997	0	6,402	40,726	12,467	25,477	246,826	477,554	51,256	87,976	1,905	0	625,558	631,675	6,610	60,369	132,067	51,471
2006	11,737,201	0	5,750	38,392	11,738	24,633	232,678	443,874	49,132	90,805	0	0	597,990	602,726	6,392	63,652	120,526	46,683
2007	10,213,510	0	4,611	33,413	10,215	21,453	202,505	388,143	42,741	90,695	0	0	515,006	518,433	5,572	55,029	109,119	45,385
2008	9,147,808	0	3,680	29,936	9,148	18,915	181,432	355,701	38,323	80,979	0	0	452,481	456,496	4,970	48,677	99,178	40,219
2009	8,360,729	0	5,716	27,333	8,361	16,891	165,655	341,094	34,871	77,002	1,715	0	413,816	416,968	4,530	44,694	96,864	40,571
TOTAL	109,739,180	0	60,434	359,174	109,748	121,197	2,176,804	4,304,676	459,466	772,369	7,780	0	5,558,677	5,583,920	58,857	555,893	1,043,482	518,268

# California Authority of Racing Fairs

## Bakersfield Distribution of 2% Location Fees from Advance Deposit Wagering (ADW)

	2000	2001	2002	2003	2004	2005	2006	2007	2008	2009	TOTAL
2% Location Fees (ADW)	0	0	16,363	26,332	34,685	42,423	54,299	59,248	51,591	53,184	338,126

# California Authority of Racing Fairs

## Cumulative Funding Disbursements to Kern County Fair (Bakersfield) SWF 2000-2009

	2000	2001	2002	2003	2004	2005	2006	2007	2008	2009	TOTALS
Infotext Funds	-	-	-	-	-	-	1,350.00	-	-	-	1,350.00
Equip. Replacement Fund	-	-	-	400.00	-	-	2,420.22	-	329.36	-	3,149.58
SWF upgrades	-	-	-	-	-	20,885.41	-	-	-	-	20,885.41
Total Funding	-	-	-	400.00	-	20,885.41	3,770.22	-	329.36	-	24,034.99

# CALIFORNIA AUTHORITY OF RACING FAIRS COMMISSIONS & PROJECT FUNDING

## SAN DIEGO COUNTY FAIR - DEL MAR (SURFSIDE RACE PLACE)

(1) 2% PARI-MUTUEL COMMISSIONS (LOCATION FEES) PAID TO San Diego County Fair

(2) PROJECT FUNDING PAID THROUGH CARF TO San Diego County Fair

2000-2009

2000		2001		2002	
(1) 2% Commissions	1,970,975	(1) 2% Commissions	1,919,800	(1) 2% Commissions	2,110,924
(2) Project Funding	68,999	(2) Project Funding	28,162	(2) Project Funding	10,358
<b>TOTAL</b>	<b>2,039,974</b>	<b>TOTAL</b>	<b>1,947,962</b>	<b>TOTAL</b>	<b>2,121,282</b>

2003		2004		2005	
(1) 2% Commissions	2,061,010	(1) 2% Commissions	1,966,349	(1) 2% Commissions	1,915,552
(2) Project Funding	143,944	(2) Project Funding	45,226	(2) Project Funding	47,699
<b>TOTAL</b>	<b>2,204,954</b>	<b>TOTAL</b>	<b>2,011,575</b>	<b>TOTAL</b>	<b>1,963,251</b>

2006		2007		2008	
(1) 2% Commissions	1,979,209	(1) 2% Commissions	2,010,621	(1) 2% Commissions	1,845,860
(2) Project Funding	45,889	(2) Project Funding	18,485	(2) Project Funding	0
<b>TOTAL</b>	<b>2,025,097</b>	<b>TOTAL</b>	<b>2,029,106</b>	<b>TOTAL</b>	<b>1,845,860</b>

2009		2000-2009	
(1) 2% Commissions	1,537,072	(1) 2% Commissions	19,317,371
(2) Project Funding	0	(2) Project Funding	408,762
<b>TOTAL</b>	<b>1,537,072</b>	<b>TOTAL</b>	<b>19,726,133</b>

**\$19,318,000** Pari-Mutuel Commissions Paid to San Diego County Fair

**\$409,000** Project Funding Paid through CARF to San Diego County Fair

NOTE: Withdrew from CARF in 2007



# California Authority of Racing Fairs

## Surfside Race Place Detailed Distribution Report for Ten Year Comparison

	Handle	License Fee	CHRB Support Fee	F&E Fund	City Tax	Equine UC Davis	Workers Comp.	2% Comm. Loc. Fees	N/SCOTW inc. Expense	CMC Promotion	Vanning Stable	PFAB 509	Harness Loc. Fees	Track Comm.	Purses	Owners	Breeders Sires	To Out of State Tracks	Attendance
2000	99,487,568	1,928,880	0	42,809	325,211	99,489	0	1,970,975	2,856,826	401,523	511,340	0	0	5,091,100	5,021,855	63,942	519,724	731,846	350,575
2001	97,126,288	1,863,400	0	34,068	316,767	97,127	0	1,919,800	2,801,355	391,985	530,964	0	0	4,837,952	4,777,457	61,641	505,375	816,337	331,728
2002	97,901,701	1,855,583	0	32,941	319,294	97,903	0	1,935,114	2,846,868	395,513	682,673	0	0	4,697,804	4,634,811	61,836	508,730	837,868	329,120
2003	88,032,708	1,668,153	0	32,720	288,669	88,034	0	1,749,511	2,560,373	357,457	815,801	0	0	4,142,211	4,086,508	56,038	460,242	705,480	301,945
2004	80,866,792	1,531,935	0	23,565	263,222	80,868	90,546	1,595,281	2,337,830	324,559	766,331	13,560	0	3,833,598	3,784,288	50,702	417,505	806,432	284,212
2005	76,787,497	1,436,994	0	24,254	249,512	76,788	174,720	1,512,195	2,244,435	305,732	714,383	9,331	0	3,697,152	3,668,780	47,273	391,580	811,548	264,893
2006	79,207,658	1,467,665	0	23,320	258,044	79,208	181,036	1,563,905	2,323,405	320,484	746,730	0	0	3,780,870	3,751,684	49,428	423,879	816,510	253,672
2007	77,766,377	1,454,377	0	22,714	253,376	77,767	176,431	1,535,608	2,264,800	314,105	739,418	0	0	3,713,636	3,683,445	48,925	415,821	830,981	243,835
2008	69,014,540	1,298,772	0	18,557	226,244	69,015	156,584	1,371,174	1,988,640	279,692	648,619	0	0	3,313,880	3,286,405	44,201	369,645	702,099	209,951
2009	56,505,784	691,720	148,961	32,108	185,082	56,506	119,373	1,121,707	1,644,312	228,722	637,980	9,131	0	2,663,347	2,642,590	35,741	305,526	651,622	178,574
TOTAL	822,696,912	15,197,480	148,961	287,057	2,685,421	822,704	898,689	16,275,269	23,868,845	3,319,773	6,794,239	32,022	0	39,771,550	39,337,822	519,726	4,318,029	7,710,722	2,748,505

# California Authority of Racing Fairs

## Surfside Race Place Distribution of 2% Location Fees from Advance Deposit Wagering (ADW)

	2000	2001	2002	2003	2004	2005	2006	2007	2008	2009	TOTAL
2% Location Fees (ADW)	0	0	175,810	311,499	371,068	403,357	415,304	475,014	474,686	415,365	3,042,102

# California Authority of Racing Fairs

## Cumulative Funding Disbursements to San Diego County Fair (Del Mar) SWF 2000-2009

	2000	2001	2002	2003	2004	2005	2006	2007	2008	2009	TOTALS
Infotext Funds	-	-	-	-	-	-	450	-	-	-	450
Equip. Replacement Fund	68,999	28,162	10,358	143,944	31,190	47,699	2,069	-	-	-	332,421
SWF upgrades	-	-	-	-	14,036	-	43,370	18,485	-	-	75,891
Total Funding	68,999	28,162	10,358	143,944	45,226	47,699	45,889	18,485	-	-	408,762

# CALIFORNIA AUTHORITY OF RACING FAIRS COMMISSIONS & PROJECT FUNDING

## REDWOOD ACRES FAIR - EUREKA

(1) 2% PARI-MUTUEL COMMISSIONS (LOCATION FEES) PAID TO Redwood Acres Fair

(2) PROJECT FUNDING PAID THROUGH CARF TO Redwood Acres Fair

2000-2009

2000		2001		2002	
(1) 2% Commissions	41,847	(1) 2% Commissions	43,759	(1) 2% Commissions	42,057
(2) Project Funding	0	(2) Project Funding	36,430	(2) Project Funding	0
<b>TOTAL</b>	<b>41,847</b>	<b>TOTAL</b>	<b>80,189</b>	<b>TOTAL</b>	<b>42,057</b>

2003		2004		2005	
(1) 2% Commissions	42,586	(1) 2% Commissions	49,367	(1) 2% Commissions	49,924
(2) Project Funding	3,855	(2) Project Funding	2,707	(2) Project Funding	13,333
<b>TOTAL</b>	<b>46,441</b>	<b>TOTAL</b>	<b>52,074</b>	<b>TOTAL</b>	<b>63,256</b>

2006		2007		2008	
(1) 2% Commissions	46,390	(1) 2% Commissions	47,577	(1) 2% Commissions	47,238
(2) Project Funding	0	(2) Project Funding	0	(2) Project Funding	18,134
<b>TOTAL</b>	<b>46,390</b>	<b>TOTAL</b>	<b>47,577</b>	<b>TOTAL</b>	<b>65,372</b>

2009		2000-2009	
(1) 2% Commissions	39,546	(1) 2% Commissions	450,289
(2) Project Funding	2,764	(2) Project Funding	77,223
<b>TOTAL</b>	<b>42,310</b>	<b>TOTAL</b>	<b>527,512</b>

\$451,000	<b>Pari-Mutuel Commissions Paid to Redwood Acres Fair</b>
\$78,000	<b>Project Funding Paid through CARF to Redwood Acres Fair</b>





# California Authority of Racing Fairs

## Eureka Detailed Distribution Report for Ten Year Comparison

Handle	License Fee	CHRB Support Fee	F&E Fund	City Tax	Equine UC Davis	Workers Comp.	2% Comm. Loc. Fees	N/SCOTW inc. Expense	CMC Promotion	Vanning Stable	PFAB 509	Harness Loc. Fees	Track Comm.	Purses	Owners	Breeders Sires	To Out of State Tracks	Attendance
2000	2,109,598	24,477	0	1,531	6,905	2,110	0	41,847	8,374	14,620	0	0	89,001	88,079	1,489	10,987	22,335	6,064
2001	2,207,426	25,732	0	1,752	7,221	2,208	0	43,759	8,752	15,317	0	0	96,978	96,624	1,562	11,482	23,470	6,240
2002	1,992,597	23,251	0	1,361	6,497	1,993	0	39,371	7,886	14,239	0	0	94,357	94,384	1,394	10,338	22,315	6,773
2003	1,915,855	22,414	0	1,317	6,269	1,917	0	37,994	7,603	17,616	0	0	88,133	87,802	1,342	9,986	21,336	5,558
2004	2,208,215	25,278	0	1,669	7,206	2,209	2,532	43,673	8,705	20,453	0	0	104,058	103,579	1,548	11,381	26,992	5,401
2005	2,085,052	24,490	0	1,291	6,800	2,086	4,442	41,212	8,132	19,103	0	0	101,681	101,192	1,441	10,725	24,120	4,876
2006	1,887,466	22,760	0	766	6,133	1,888	3,319	37,172	7,435	18,609	0	0	91,809	91,619	1,310	9,888	25,535	4,594
2007	1,928,327	22,953	0	776	6,267	1,929	3,670	37,984	7,600	21,802	0	0	95,261	94,652	1,337	10,083	28,924	4,296
2008	1,897,879	22,947	0	686	6,205	1,898	3,038	37,607	7,525	21,607	0	0	88,968	88,998	1,321	9,932	28,127	3,887
2009	1,453,789	14,009	1,498	1,151	4,745	1,454	2,097	28,755	5,752	17,244	0	0	64,010	64,036	1,017	7,538	22,356	2,724
TOTAL	19,686,203	228,309	1,498	12,301	64,248	19,692	19,097	389,374	77,762	180,610	0	0	914,255	910,965	13,761	102,340	245,510	50,413

# California Authority of Racing Fairs

## Redwood Acres Fair Distribution of 2% Location Fees from Advance Deposit Wagering (ADW)

2000	2001	2002	2003	2004	2005	2006	2007	2008	2009	TOTAL
0	0	2,686	4,592	5,694	8,711	9,218	9,593	9,631	10,791	60,915

2% Location Fees (ADW)

# California Authority of Racing Fairs

## Cumulative Funding Disbursements to Redwood Acres Fair (Eureka) SWF 2000-2009

2000	2001	2002	2003	2004	2005	2006	2007	2008	2009	TOTALS
-	36,430	-	3,855	970	11,595	-	-	18,134	2,438	73,422
-	-	-	-	1,737	1,737	-	-	-	327	3,801
-	36,430	-	3,855	2,707	13,333	-	-	18,134	2,764	77,223

Equip. Replacement Fund  
SWF upgrades  
Total Funding

# CALIFORNIA AUTHORITY OF RACING FAIRS COMMISSIONS & PROJECT FUNDING

## BIG FRESNO FAIR - FRESNO

(1) 2% PARI-MUTUEL COMMISSIONS (LOCATION FEES) PAID TO Big Fresno Fair

(2) PROJECT FUNDING PAID THROUGH CARF TO Big Fresno Fair

2000-2009

2000		2001		2002	
(1) 2% Commissions	314,441	(1) 2% Commissions	294,716	(1) 2% Commissions	293,128
(2) Project Funding	0	(2) Project Funding	84,873	(2) Project Funding	0
<b>TOTAL</b>	<b>314,441</b>	<b>TOTAL</b>	<b>379,589</b>	<b>TOTAL</b>	<b>293,128</b>
2003		2004		2005	
(1) 2% Commissions	297,592	(1) 2% Commissions	312,893	(1) 2% Commissions	302,936
(2) Project Funding	234,451	(2) Project Funding	198,455	(2) Project Funding	67,150
<b>TOTAL</b>	<b>532,044</b>	<b>TOTAL</b>	<b>511,349</b>	<b>TOTAL</b>	<b>370,086</b>
2006		2007		2008	
(1) 2% Commissions	300,364	(1) 2% Commissions	274,138	(1) 2% Commissions	253,831
(2) Project Funding	5,024	(2) Project Funding	59,234	(2) Project Funding	17,501
<b>TOTAL</b>	<b>305,388</b>	<b>TOTAL</b>	<b>333,372</b>	<b>TOTAL</b>	<b>271,332</b>
2009		2000-2009		<div style="border: 1px solid black; padding: 5px;"> <p><b>\$2,855,000</b> Pari-Mutuel Commissions Paid to Big Fresno Fair</p> <p><b>\$684,000</b> Project Funding Paid through CARF to Big Fresno Fair</p> </div>	
(1) 2% Commissions	210,452	(1) 2% Commissions	2,854,492		
(2) Project Funding	16,416	(2) Project Funding	683,106		
<b>TOTAL</b>	<b>226,869</b>	<b>TOTAL</b>	<b>3,537,597</b>		



# California Authority of Racing Fairs

## Fresno Detailed Distribution Report for Ten Year Comparison

Handle	License Fee	CHRB Support Fee	F&E Fund	City Tax	Equine UC Davis	Workers Comp.	2% Comm. Loc. Fees	N/SCOTW inc. Expense	CMC Promotion	Vanning Stable	PFAB 509	Harness Loc. Fees	Track Comm.	Purses	Owners	Breeders Sires	To Out of State Tracks	Attendance
2000	15,839,997	169,229	0	13,054	51,883	15,841	0	314,441	65,001	95,283	0	0	812,015	813,229	9,703	79,998	120,587	78,004
2001	14,845,815	156,162	0	11,558	48,628	14,847	0	294,716	61,121	87,925	0	0	747,727	751,315	8,927	74,615	119,160	70,732
2002	13,860,257	145,785	0	9,900	45,286	13,861	0	274,460	56,843	85,140	0	0	701,043	704,168	8,362	69,408	120,093	64,365
2003	13,371,429	140,673	0	9,329	43,823	13,372	0	265,598	54,954	106,419	0	0	667,884	669,694	8,108	67,368	119,186	57,633
2004	13,808,287	145,240	0	9,188	45,098	13,809	17,301	273,322	56,241	109,146	4,162	0	690,506	692,320	8,235	68,783	141,457	52,584
2005	12,549,489	131,557	0	7,401	40,923	12,551	25,735	248,017	50,444	99,998	653	0	632,150	634,959	7,519	62,324	140,043	48,455
2006	12,412,342	129,229	0	6,140	40,526	12,413	25,190	245,610	50,922	105,178	0	0	616,798	620,637	7,406	65,751	139,123	46,708
2007	10,720,463	111,806	0	5,696	34,932	10,721	21,974	211,706	43,753	105,512	0	0	528,385	529,439	6,483	56,680	130,244	43,379
2008	10,092,561	108,235	0	4,578	32,967	10,093	20,712	199,800	41,186	100,862	0	0	489,908	490,875	6,202	52,657	122,729	39,715
2009	7,702,848	51,941	12,940	6,006	25,137	7,703	14,989	152,346	31,558	77,152	1,271	0	373,057	374,273	4,558	40,509	104,250	35,446
TOTAL	125,203,489	1,289,857	12,940	82,850	409,203	125,212	125,901	2,480,014	512,021	972,615	6,086	0	6,259,473	6,280,909	75,504	638,093	1,256,871	537,021

# California Authority of Racing Fairs

## Big Fresno Fair Distribution of 2% Location Fees from Advance Deposit Wagering (ADW)

2000	2001	2002	2003	2004	2005	2006	2007	2008	2009	TOTAL
0	0	18,668	31,994	39,571	54,919	54,755	62,432	54,031	58,107	374,477

2% Location Fees (ADW)

# California Authority of Racing Fairs

## Cumulative Funding Disbursements to Big Fresno Fair (Fresno) SWF 2000-2009

2000	2001	2002	2003	2004	2005	2006	2007	2008	2009	TOTALS
-	11,619	-	5,562	-	16,197	5,024	8,643	17,501	16,416	80,962
-	73,255	-	228,889	198,455	50,954	-	50,591	-	-	602,143
-	84,873	-	234,451	198,455	67,150	5,024	59,234	17,501	16,416	683,106

Equip. Replacement Fund  
SWF upgrades  
Total Funding

# CALIFORNIA AUTHORITY OF RACING FAIRS COMMISSIONS & PROJECT FUNDING

## SOUTHERN CALIFORNIA FAIR - LAKE PERRIS

(1) 2% PARI-MUTUEL COMMISSIONS (LOCATION FEES) PAID TO Southern California Fair

(2) PROJECT FUNDING PAID THROUGH CARF TO Southern California Fair

2000-2009

2000		2001		2002	
(1) 2% Commissions	536,572	(1) 2% Commissions	536,252	(1) 2% Commissions	577,848
(2) Project Funding	6,094	(2) Project Funding	28,892	(2) Project Funding	31,061
<b>TOTAL</b>	<b>542,667</b>	<b>TOTAL</b>	<b>565,144</b>	<b>TOTAL</b>	<b>608,909</b>

2003		2004		2005	
(1) 2% Commissions	630,203	(1) 2% Commissions	676,701	(1) 2% Commissions	653,093
(2) Project Funding	54,005	(2) Project Funding	33,791	(2) Project Funding	60,441
<b>TOTAL</b>	<b>684,209</b>	<b>TOTAL</b>	<b>710,492</b>	<b>TOTAL</b>	<b>713,534</b>

2006		2007		2008	
(1) 2% Commissions	641,501	(1) 2% Commissions	628,522	(1) 2% Commissions	549,456
(2) Project Funding	34,935	(2) Project Funding	23,259	(2) Project Funding	16,985
<b>TOTAL</b>	<b>676,436</b>	<b>TOTAL</b>	<b>651,781</b>	<b>TOTAL</b>	<b>566,441</b>

2009		2000-2009	
(1) 2% Commissions	455,406	(1) 2% Commissions	5,885,555
(2) Project Funding	26,112	(2) Project Funding	315,576
<b>TOTAL</b>	<b>481,518</b>	<b>TOTAL</b>	<b>6,201,130</b>

\$5,886,000	<b>Pari-Mutuel Commissions Paid to Southern California Fair</b>
\$316,000	<b>Project Funding Paid through CARF to Southern California Fair</b>





# California Authority of Racing Fairs

## Lake Perris Detailed Distribution Report for Ten Year Comparison

Handle	License Fee	CHRB Support Fee	F&E Fund	City Tax	Equine UC Davis	Workers Comp.	2% Comm. Loc. Fees	N/SCOTW inc. Expense	CMC Promotion	Vanning Stable	PFAB 509	Harness Loc. Fees	Track Comm.	Purses	Owners	Breeders Sires	To Out of State Tracks	Attendance
2000	26,969,696	493,725	0	20,045	88,535	26,971	0	536,572	840,819	111,000	129,679	0	1,381,016	1,365,983	16,235	139,134	160,916	128,140
2001	26,968,619	492,313	0	18,705	88,482	26,970	0	536,252	838,390	111,133	138,197	0	1,374,342	1,362,088	16,078	139,001	177,316	121,694
2002	26,381,239	478,934	0	15,939	86,474	26,382	0	524,086	830,253	108,799	170,736	0	1,326,363	1,313,733	15,576	135,530	189,788	125,675
2003	27,447,364	498,607	0	16,194	90,251	27,448	0	546,978	857,892	113,321	240,886	0	1,291,709	1,278,233	16,438	141,753	207,359	126,353
2004	28,346,715	508,094	0	17,710	92,933	28,348	40,640	563,230	893,046	116,388	250,143	4,802	1,364,950	1,353,245	16,572	144,757	240,660	128,506
2005	25,735,190	455,711	0	14,251	84,264	25,736	58,901	510,696	811,117	104,666	224,312	1,879	1,256,934	1,253,703	14,861	130,010	230,766	109,652
2006	25,252,997	439,205	0	13,712	82,703	25,254	56,923	501,233	812,122	104,546	219,835	0	1,219,352	1,216,950	14,571	136,257	224,639	102,050
2007	24,017,783	420,185	0	11,927	78,664	24,019	54,197	476,750	766,428	99,387	209,687	0	1,166,985	1,164,516	13,893	130,028	221,212	99,390
2008	20,141,178	361,465	0	10,451	66,167	20,142	47,420	401,010	625,031	83,039	177,621	0	986,463	983,584	12,060	107,849	172,852	85,672
2009	15,777,120	155,599	52,521	13,014	51,811	15,778	35,368	314,006	497,893	65,184	164,754	1,916	785,928	784,673	9,231	86,348	152,058	75,290
TOTAL	247,037,901	4,305,839	52,521	151,948	810,284	247,046	293,448	4,910,812	7,772,992	1,017,463	1,925,847	8,597	12,154,041	12,076,707	145,516	1,290,667	1,977,565	1,102,422

# California Authority of Racing Fairs

## Southern California Fair Distribution of 2% Location Fees from Advance Deposit Wagering (ADW)

2000	2001	2002	2003	2004	2005	2006	2007	2008	2009	TOTAL
0	0	53,762	83,226	113,471	142,398	140,268	151,772	148,446	141,399	974,743
2% Location Fees (ADW)										

# California Authority of Racing Fairs

## Cumulative Funding Disbursements to Southern California Fair (Lake Perris) SWF 2000-2009

	2000	2001	2002	2003	2004	2005	2006	2007	2008	2009	TOTALS
Infotext Funds	-	-	-	-	-	-	-	-	-	-	-
Equip. Replacement Fund	6,094	28,892	31,061	54,005	23,329	20,312	34,935	23,259	16,985	26,112	264,985
SWF upgrades	-	-	-	-	10,462	40,129	-	-	-	-	50,591
Total Funding	6,094	28,892	31,061	54,005	33,791	60,441	34,935	23,259	16,985	26,112	315,576

# CALIFORNIA AUTHORITY OF RACING FAIRS COMMISSIONS & PROJECT FUNDING ANTELOPE VALLEY FAIR - LANCASTER

(1) 2% PARI-MUTUEL COMMISSIONS (LOCATION FEES) PAID TO Antelope Valley Fair  
(2) PROJECT FUNDING PAID THROUGH CARF TO Antelope Valley Fair  
2000-2009

2000		2001		2002	
(1) 2% Commissions	358,984	(1) 2% Commissions	338,791	(1) 2% Commissions	416,417
(2) Project Funding	14,939	(2) Project Funding	4,358	(2) Project Funding	19,311
<b>TOTAL</b>	<b>373,924</b>	<b>TOTAL</b>	<b>343,149</b>	<b>TOTAL</b>	<b>435,727</b>

2003		2004		2005	
(1) 2% Commissions	460,422	(1) 2% Commissions	505,125	(1) 2% Commissions	543,197
(2) Project Funding	1,589	(2) Project Funding	32,697	(2) Project Funding	21,146
<b>TOTAL</b>	<b>462,011</b>	<b>TOTAL</b>	<b>537,822</b>	<b>TOTAL</b>	<b>564,343</b>

2006		2007		2008	
(1) 2% Commissions	563,214	(1) 2% Commissions	561,828	(1) 2% Commissions	486,515
(2) Project Funding	39,668	(2) Project Funding	18,443	(2) Project Funding	1,814
<b>TOTAL</b>	<b>602,882</b>	<b>TOTAL</b>	<b>580,271</b>	<b>TOTAL</b>	<b>488,329</b>

2009		2000-2009		<div style="border: 1px solid black; padding: 5px;"> <p><b>\$4,679,000</b> Pari-Mutuel Commissions Paid to Antelope Valley Fair</p> <p><b>\$160,000</b> Project Funding Paid through CARF to Antelope Valley Fair</p> </div>	
(1) 2% Commissions	443,572	(1) 2% Commissions	4,678,065		
(2) Project Funding	5,997	(2) Project Funding	159,961		
<b>TOTAL</b>	<b>449,568</b>	<b>TOTAL</b>	<b>4,838,025</b>		



# California Authority of Racing Fairs

## Lancaster Detailed Distribution Report for Ten Year Comparison

Handle	License Fee	CHRB Support Fee	F&E Fund	City Tax	Equine UC Davis	Workers Comp.	2% Comm. Loc. Fees	N/SCOTW inc. Expense	CMC Promotion	Vanning Stable	PFAB 509	Harness Loc. Fees	Track Comm.	Purses	Owners	Breeders Sires	To Out of State Tracks	Attendance
2000	18,029,341	320,462	0	11,470	59,233	18,031	0	358,984	584,393	75,051	82,335	0	944,243	937,164	10,313	92,133	120,740	87,290
2001	17,027,329	299,826	0	10,767	55,901	17,029	0	338,791	556,421	70,964	82,812	0	875,551	870,912	9,638	86,815	133,117	88,113
2002	18,957,828	328,473	0	11,135	62,215	18,959	0	377,060	632,546	79,342	115,029	0	961,994	956,738	10,468	96,140	153,065	92,928
2003	20,081,006	350,734	0	13,468	66,066	20,082	0	400,402	664,375	83,935	166,963	0	1,003,795	995,919	11,368	102,394	163,271	102,486
2004	21,242,411	372,169	0	12,550	69,640	21,243	29,775	422,058	693,269	87,822	180,283	3,662	1,054,495	1,046,895	11,961	107,486	190,240	103,902
2005	22,006,174	379,069	0	10,910	72,105	22,007	48,016	436,999	722,476	90,036	181,533	3,954	1,090,774	1,091,243	12,038	109,551	202,046	110,626
2006	22,299,693	379,355	0	11,045	73,111	22,300	48,162	443,099	730,896	92,892	189,374	0	1,095,700	1,094,894	12,549	122,576	216,925	101,265
2007	21,486,984	369,673	0	9,748	70,454	21,488	46,972	426,994	695,059	89,347	184,323	0	1,057,554	1,056,830	12,206	117,257	212,923	112,378
2008	17,818,806	308,656	0	8,716	58,539	17,819	38,865	354,782	575,973	74,092	150,680	0	879,408	879,437	10,231	96,348	174,289	93,932
2009	15,981,793	151,486	51,516	12,906	52,502	15,982	33,677	318,198	521,031	66,481	160,530	3,189	817,492	818,071	8,994	88,339	174,222	77,384
TOTAL	194,931,365	3,259,902	51,516	112,715	639,767	194,941	245,467	3,877,367	6,374,439	809,961	1,493,862	10,805	9,781,005	9,748,104	109,766	1,019,039	1,740,838	970,304

# California Authority of Racing Fairs

## Antelope Valley Fair Distribution of 2% Location Fees from Advance Deposit Wagering (ADW)

2000	2001	2002	2003	2004	2005	2006	2007	2008	2009	TOTAL
0	0	39,357	60,020	83,067	106,197	120,115	134,834	131,733	125,374	800,698

2% Location Fees (ADW)

# California Authority of Racing Fairs

## Cumulative Funding Disbursements to Antelope Valley Fair (Lancaster) SWF 2000-2009

	2000	2001	2002	2003	2004	2005	2006	2007	2008	2009	TOTALS
Infotext Funds	14,939	-	-	-	-	-	-	-	-	-	14,939
Equip. Replacement Fund	-	4,358	19,311	1,589	20,855	21,146	20,911	18,443	1,814	5,997	114,423
SWF upgrades	-	-	-	-	11,842	-	18,757	-	-	-	30,599
Total Funding	14,939	4,358	19,311	1,589	32,697	21,146	39,668	18,443	1,814	5,997	159,961

# CALIFORNIA AUTHORITY OF RACING FAIRS COMMISSIONS & PROJECT FUNDING

## MONTEREY COUNTY FAIR - MONTEREY

(1) 2% PARI-MUTUEL COMMISSIONS (LOCATION FEES) PAID TO Monterey County Fair

(2) PROJECT FUNDING PAID THROUGH CARF TO Monterey County Fair

2000-2009

2000		2001		2002	
(1) 2% Commissions	310,941	(1) 2% Commissions	331,141	(1) 2% Commissions	304,024
(2) Project Funding	10,815	(2) Project Funding	246,169	(2) Project Funding	98,314
<b>TOTAL</b>	<b>321,755</b>	<b>TOTAL</b>	<b>577,311</b>	<b>TOTAL</b>	<b>402,338</b>

2003		2004		2005	
(1) 2% Commissions	302,446	(1) 2% Commissions	317,050	(1) 2% Commissions	341,518
(2) Project Funding	20,121	(2) Project Funding	35,296	(2) Project Funding	37,462
<b>TOTAL</b>	<b>322,568</b>	<b>TOTAL</b>	<b>352,345</b>	<b>TOTAL</b>	<b>378,980</b>

2006		2007		2008	
(1) 2% Commissions	328,185	(1) 2% Commissions	338,543	(1) 2% Commissions	304,965
(2) Project Funding	6,868	(2) Project Funding	1,989	(2) Project Funding	329
<b>TOTAL</b>	<b>335,053</b>	<b>TOTAL</b>	<b>340,532</b>	<b>TOTAL</b>	<b>305,294</b>

2009		2000-2009	
(1) 2% Commissions	227,659	(1) 2% Commissions	3,106,473
(2) Project Funding	3,418	(2) Project Funding	460,781
<b>TOTAL</b>	<b>231,078</b>	<b>TOTAL</b>	<b>3,567,254</b>

\$3,107,000	Pari-Mutuel Commissions Paid to Monterey County Fair
\$461,000	Project Funding Paid through CARF to Monterey County Fair





# California Authority of Racing Fairs

## Monterey Detailed Distribution Report for Ten Year Comparison

Handle	License Fee	CHRB Support Fee	F&E Fund	City Tax	Equine UC Davis	Workers Comp.	2% Comm. Loc. Fees	N/SCOTW inc. Expense	CMC Promotion	Vanning Stable	PFAB 509	Harness Loc. Fees	Track Comm.	Purses	Owners	Breeders Sires	To Out of State Tracks	Attendance
2000	15,635,566	161,201	0	9,535	51,305	15,637	0	310,941	596,816	65,563	85,222	0	840,975	837,332	8,677	77,681	134,385	60,749
2001	16,652,280	167,169	0	10,113	54,638	16,653	0	331,141	661,758	70,273	87,604	0	877,213	876,318	8,934	81,974	152,644	59,907
2002	14,350,846	144,072	0	7,985	47,029	14,352	0	285,027	562,162	60,501	78,028	0	764,298	763,825	7,663	70,608	131,382	57,245
2003	13,538,507	135,834	0	7,723	44,421	13,540	0	269,215	528,964	56,887	96,812	0	707,590	706,167	7,396	66,919	133,545	51,619
2004	13,963,588	140,285	0	6,821	45,669	13,965	16,873	276,780	538,470	58,038	97,435	7,027	730,563	730,036	7,352	67,955	160,204	50,509
2005	14,425,190	143,585	0	7,092	47,194	14,426	28,180	286,023	555,266	59,333	98,563	5,437	754,783	761,612	7,418	69,299	168,282	54,545
2006	13,367,553	137,092	0	5,082	43,741	13,368	25,694	265,097	487,908	55,674	106,212	0	684,134	688,723	7,480	70,099	163,967	54,887
2007	13,643,140	141,655	0	5,917	44,665	13,644	24,376	270,698	515,870	56,522	128,264	0	653,442	655,701	7,876	72,768	184,672	42,624
2008	11,896,295	122,697	0	5,232	38,997	11,897	21,792	236,342	474,757	49,183	113,961	0	571,369	573,388	7,018	61,096	163,424	38,173
2009	8,009,204	51,734	13,267	4,718	26,183	8,010	14,410	158,685	319,968	33,292	74,567	2,453	406,262	409,105	4,410	41,559	114,758	34,881
TOTAL	135,482,169	1,345,325	13,267	70,219	443,842	135,492	131,325	2,689,949	5,241,939	565,266	966,668	14,918	6,990,629	7,002,206	74,225	679,957	1,507,263	505,139

# California Authority of Racing Fairs

## Monterey County Fair Distribution of 2% Location Fees from Advance Deposit Wagering (ADW)

2000	2001	2002	2003	2004	2005	2006	2007	2008	2009	TOTAL
0	0	18,998	33,231	40,270	55,494	63,088	67,845	68,623	68,975	416,523
2% Location Fees (ADW)										

# California Authority of Racing Fairs

## Cumulative Funding Disbursements to Monterey County Fair (Monterey) SWF 2000-2009

	2000	2001	2002	2003	2004	2005	2006	2007	2008	2009	TOTALS
Infotext Funds	9,482	-	-	-	-	-	-	-	-	-	9,482
Equip. Replacement Fund	842	65,941	44,804	20,121	9,886	20,719	-	1,989	329	3,418	168,050
SWF upgrades	490	180,228	53,511	-	25,410	16,743	6,868	-	-	-	283,249
Total Funding	10,815	246,169	98,314	20,121	35,296	37,462	6,868	1,989	329	3,418	460,781

# CALIFORNIA AUTHORITY OF RACING FAIRS COMMISSIONS & PROJECT FUNDING

## ALAMEDA COUNTY FAIR - PLEASANTON

(1) 2% PARI-MUTUEL COMMISSIONS (LOCATION FEES) PAID TO Alameda County Fair

(2) PROJECT FUNDING PAID THROUGH CARF TO Alameda County Fair

2000-2009

2000		2001		2002	
(1) 2% Commissions	1,244,255	(1) 2% Commissions	1,328,845	(1) 2% Commissions	1,473,183
(2) Project Funding	83,237	(2) Project Funding	94,386	(2) Project Funding	118,803
<b>TOTAL</b>	<b>1,327,492</b>	<b>TOTAL</b>	<b>1,423,230</b>	<b>TOTAL</b>	<b>1,591,986</b>

2003		2004		2005	
(1) 2% Commissions	1,436,788	(1) 2% Commissions	1,413,204	(1) 2% Commissions	1,420,369
(2) Project Funding	37,937	(2) Project Funding	35,754	(2) Project Funding	75,774
<b>TOTAL</b>	<b>1,474,725</b>	<b>TOTAL</b>	<b>1,448,958</b>	<b>TOTAL</b>	<b>1,496,143</b>

2006		2007		2008	
(1) 2% Commissions	1,307,993	(1) 2% Commissions	1,348,365	(1) 2% Commissions	1,197,962
(2) Project Funding	7,851	(2) Project Funding	15,799	(2) Project Funding	15,359
<b>TOTAL</b>	<b>1,315,845</b>	<b>TOTAL</b>	<b>1,364,164</b>	<b>TOTAL</b>	<b>1,213,321</b>

2009		2000-2009		Summary	
(1) 2% Commissions	1,089,076	(1) 2% Commissions	13,260,040	\$13,261,000	Pari-Mutuel Commissions Paid to Alameda County Fair
(2) Project Funding	22,860	(2) Project Funding	507,761	\$508,000	Project Funding Paid through CARF to Alameda County Fair
<b>TOTAL</b>	<b>1,111,937</b>	<b>TOTAL</b>	<b>13,767,801</b>		



# California Authority of Racing Fairs

## Pleasanton Detailed Distribution Report for Ten Year Comparison

	Handle	License Fee	CHRB Support Fee	F&E Fund	City Tax	Equine UC Davis	Workers Comp.	2% Comm. Loc. Fees	N/SCOTW inc. Expense	CMC Promotion	Vanning Stable	PFAB 509	Harness Loc. Fees	Track Comm.	Purses	Owners	Breeders Sires	To Out of State Tracks	Attendance
2000	62,513,506	670,568	0	53,121	205,302	62,515	0	1,244,255	2,259,313	257,335	376,117	0	0	3,268,773	3,274,390	38,353	316,835	432,028	215,851
2001	66,786,964	705,027	0	54,206	219,259	66,788	0	1,328,845	2,479,621	276,072	392,994	0	0	3,469,796	3,476,271	40,097	336,433	507,578	219,948
2002	69,537,858	737,060	0	48,962	228,119	69,539	0	1,382,537	2,548,111	287,054	425,814	0	0	3,619,332	3,627,128	41,832	350,321	577,160	215,006
2003	63,960,107	675,431	0	45,979	210,251	63,961	0	1,274,248	2,327,217	264,370	503,231	0	0	3,284,301	3,287,493	38,524	323,442	552,195	206,350
2004	61,476,080	650,544	0	40,652	201,475	61,477	79,364	1,221,059	2,230,319	251,321	484,892	20,534	0	3,163,027	3,166,550	36,644	307,564	601,839	185,873
2005	59,111,566	630,801	0	36,499	193,595	59,113	129,050	1,173,303	2,087,150	239,393	462,694	10,570	0	3,058,429	3,076,599	34,934	294,025	610,991	177,997
2006	52,694,119	551,888	0	28,758	172,583	52,695	113,251	1,045,961	1,862,317	217,298	445,535	0	0	2,685,756	2,702,247	31,198	280,736	541,048	165,118
2007	54,387,664	569,026	0	28,556	178,066	54,388	109,389	1,079,191	1,944,533	224,729	518,302	0	0	2,710,225	2,726,370	31,812	290,862	604,231	167,530
2008	46,300,808	499,397	0	21,193	151,990	46,301	94,031	921,151	1,662,710	190,992	452,281	0	0	2,296,878	2,311,565	27,742	243,320	511,596	147,912
2009	41,035,610	256,194	76,998	34,100	134,607	41,036	76,197	815,802	1,611,549	168,772	414,623	8,172	0	1,992,469	2,001,593	24,411	216,264	511,268	134,989
TOTAL	577,804,282	5,945,937	76,998	392,027	1,895,249	577,813	601,281	11,486,352	21,012,840	2,377,335	4,476,484	39,276	0	29,548,985	29,650,205	345,547	2,959,803	5,449,935	1,836,574

# California Authority of Racing Fairs

## Alameda County Fair Distribution of 2% Location Fees from Advance Deposit Wagering (ADW)

	2000	2001	2002	2003	2004	2005	2006	2007	2008	2009	TOTAL
2% Location Fees (ADW)	0	0	90,646	162,540	192,145	247,066	262,032	269,174	276,810	273,274	1,773,688

# California Authority of Racing Fairs

## Cumulative Funding Disbursements to Alameda County Fair (Pleasanton) SWF 2000-2009

	2000	2001	2002	2003	2004	2005	2006	2007	2008	2009	TOTALS
Infotext Funds	10,487	-	-	-	-	-	-	-	-	-	10,487
Equip. Replacement Fund	-	94,386	118,803	37,937	2,606	32,783	7,851	15,799	15,359	22,860	348,384
SWF upgrades	72,750	-	-	-	33,148	42,991	-	-	-	-	148,889
Total Funding	83,237	94,386	118,803	37,937	35,754	75,774	7,851	15,799	15,359	22,860	507,761

# CALIFORNIA AUTHORITY OF RACING FAIRS COMMISSIONS & PROJECT FUNDING

## CALIFORNIA STATE FAIR - SACRAMENTO

(1) 2% PARI-MUTUEL COMMISSIONS (LOCATION FEES) PAID TO California State Fair

(2) PROJECT FUNDING PAID THROUGH CARF TO California State Fair

2000-2009

2000		2001		2002	
(1) 2% Commissions	1,065,114	(1) 2% Commissions	1,030,575	(1) 2% Commissions	1,065,169
(2) Project Funding	119,553	(2) Project Funding	36,388	(2) Project Funding	73,309
<b>TOTAL</b>	<b>1,184,668</b>	<b>TOTAL</b>	<b>1,066,963</b>	<b>TOTAL</b>	<b>1,138,478</b>
2003		2004		2005	
(1) 2% Commissions	1,046,620	(1) 2% Commissions	1,022,814	(1) 2% Commissions	1,025,441
(2) Project Funding	137,230	(2) Project Funding	30,068	(2) Project Funding	25,394
<b>TOTAL</b>	<b>1,183,850</b>	<b>TOTAL</b>	<b>1,052,881</b>	<b>TOTAL</b>	<b>1,050,835</b>
2006		2007		2008	
(1) 2% Commissions	998,174	(1) 2% Commissions	1,011,242	(1) 2% Commissions	857,202
(2) Project Funding	79,794	(2) Project Funding	0	(2) Project Funding	0
<b>TOTAL</b>	<b>1,077,967</b>	<b>TOTAL</b>	<b>1,011,242</b>	<b>TOTAL</b>	<b>857,202</b>
2009		2000-2009		<div style="border: 1px solid black; padding: 5px;"> <p><b>\$9,880,000</b> Pari-Mutuel Commissions Paid to California State Fair</p> <p><b>\$502,000</b> Project Funding Paid through CARF to California State Fair</p> <p>NOTE: California State Fair withdrew from the CARF Equipment Replacement Program in 2007.</p> </div>	
(1) 2% Commissions	757,561	(1) 2% Commissions	9,879,911		
(2) Project Funding	0	(2) Project Funding	501,736		
<b>TOTAL</b>	<b>757,561</b>	<b>TOTAL</b>	<b>10,381,647</b>		



# California Authority of Racing Fairs

## Sacramento Detailed Distribution Report for Ten Year Comparison

Handle	License Fee	CHRB Support Fee	F&E Fund	City Tax	Equine UC Davis	Workers Comp.	2% Comm. Loc. Fees	N/SCOTW inc. Expense	CMC Promotion	Vanning Stable	PFAB 509	Harness Loc. Fees	Track Comm.	Purses	Owners	Breeders Sires	To Out of State Tracks	Attendance
2000	567,788	0	40,586	175,744	53,521	0	1,065,114	1,978,975	221,453	313,791	0	0	2,772,845	2,737,911	31,936	269,655	426,828	175,193
2001	51,845,960	0	38,379	170,045	51,847	0	1,030,575	1,908,887	213,358	310,007	0	0	2,576,006	2,612,812	31,507	262,007	454,767	171,405
2002	50,281,016	0	35,008	164,860	50,282	0	999,151	1,847,305	206,752	312,087	0	0	2,483,006	2,522,796	30,574	253,963	453,002	167,372
2003	46,716,821	0	33,011	153,398	46,717	0	929,681	1,721,136	192,723	368,796	0	0	2,271,389	2,307,242	28,136	236,076	433,813	158,194
2004	44,506,056	0	30,253	145,674	44,507	56,452	882,873	1,647,888	181,666	352,295	10,383	0	2,155,908	2,188,261	26,568	222,426	455,397	137,951
2005	42,783,818	0	28,584	139,873	42,785	88,703	847,715	1,528,931	171,912	337,764	5,027	0	2,108,412	2,132,861	25,453	212,093	466,946	131,233
2006	40,870,198	0	26,071	133,693	40,871	85,052	810,260	1,466,760	167,654	351,976	0	0	1,989,350	2,013,320	24,742	206,820	442,555	135,891
2007	40,406,793	0	24,472	132,128	40,408	83,854	800,775	1,482,202	166,214	390,775	0	0	1,938,432	1,961,074	24,083	203,510	464,359	128,267
2008	32,906,715	0	16,424	107,750	32,907	69,304	653,032	1,202,695	135,680	317,415	0	204,547	1,496,193	1,514,794	19,573	165,981	380,831	112,360
2009	28,432,047	51,492	23,164	93,027	28,432	55,710	563,796	1,122,737	117,361	282,381	684	180,144	1,285,753	1,300,814	16,688	143,815	367,705	99,140
TOTAL	432,269,215	51,492	295,951	1,416,192	432,276	439,076	8,582,974	15,907,517	1,774,771	3,337,287	16,095	384,691	21,027,295	21,291,883	259,261	2,176,345	4,346,204	1,417,006

# California Authority of Racing Fairs

## California State Fair Distribution of 2% Location Fees from Advance Deposit Wagering (ADW)

2000	2001	2002	2003	2004	2005	2006	2007	2008	2009	TOTAL
0	0	66,018	116,939	139,940	177,726	187,914	210,467	204,170	193,764	1,296,937

2% Location Fees (ADW)

# California Authority of Racing Fairs

## Cumulative Funding Disbursements to California State Fair (Sacramento) SWF 2000-2009

	2000	2001	2002	2003	2004	2005	2006	2007	2008	2009	TOTALS
Infotext Funds	29,149	-	-	-	-	-	-	-	-	-	29,149
Equip. Replacement Fund	36,794	33,000	57,559	137,230	30,068	25,394	3,903	-	-	-	323,946
SWF upgrades	53,611	3,389	15,750	-	-	75,891	-	-	-	-	148,641
Total Funding	119,553	36,388	73,309	137,230	30,068	25,394	79,794	-	-	-	501,736



# CALIFORNIA AUTHORITY OF RACING FAIRS COMMISSIONS & PROJECT FUNDING

## NATIONAL ORANGE SHOW - SAN BERNARDINO

(1) 2% PARI-MUTUEL COMMISSIONS (LOCATION FEES) PAID TO National Orange Show

(2) PROJECT FUNDING PAID THROUGH CARF TO National Orange Show

2000-2009

2000		2001		2002	
(1) 2% Commissions	1,028,911	(1) 2% Commissions	996,019	(1) 2% Commissions	1,067,369
(2) Project Funding	7,575	(2) Project Funding	35,184	(2) Project Funding	93,574
<b>TOTAL</b>	<b>1,036,486</b>	<b>TOTAL</b>	<b>1,031,203</b>	<b>TOTAL</b>	<b>1,160,943</b>
2003		2004		2005	
(1) 2% Commissions	1,092,139	(1) 2% Commissions	1,150,767	(1) 2% Commissions	1,241,165
(2) Project Funding	25,773	(2) Project Funding	44,146	(2) Project Funding	110,729
<b>TOTAL</b>	<b>1,117,912</b>	<b>TOTAL</b>	<b>1,194,913</b>	<b>TOTAL</b>	<b>1,351,894</b>
2006		2007		2008	
(1) 2% Commissions	1,205,802	(1) 2% Commissions	1,135,937	(1) 2% Commissions	1,013,619
(2) Project Funding	5,152	(2) Project Funding	13,155	(2) Project Funding	31,674
<b>TOTAL</b>	<b>1,210,954</b>	<b>TOTAL</b>	<b>1,149,091</b>	<b>TOTAL</b>	<b>1,045,292</b>
2009		2000-2009		<div style="border: 1px solid black; padding: 5px;"> <p><b>\$10,811,000</b> Pari-Mutuel Commissions Paid to National Orange Show</p> <p><b>\$398,000</b> Project Funding Paid through CARF to National Orange Show</p> </div>	
(1) 2% Commissions	878,276	(1) 2% Commissions	10,810,002		
(2) Project Funding	30,895	(2) Project Funding	397,857		
<b>TOTAL</b>	<b>909,171</b>	<b>TOTAL</b>	<b>11,207,859</b>		



# California Authority of Racing Fairs

## San Bernardino Detailed Distribution Report for Ten Year Comparison

Handle	License Fee	CHRB Support Fee	F&E Fund	City Tax	Equine UC Davis	Workers Comp.	2% Comm. Loc. Fees	N/SCOTW inc. Expense	CMC Promotion	Vanning Stable	PFAB 509	Harness Loc. Fees	Track Comm.	Purses	Owners	Breeders Sires	To Out of State Tracks	Attendance
2000	51,708,818	943,243	0	38,445	169,771	51,710	0	1,028,911	213,438	245,334	0	0	2,685,742	2,656,323	30,726	266,040	334,504	244,725
2001	50,093,175	905,883	0	33,277	164,344	50,095	0	996,019	207,226	251,886	0	0	2,567,102	2,544,677	29,297	257,002	341,643	240,763
2002	49,090,286	882,031	0	29,355	160,902	49,091	0	975,162	203,084	312,851	0	0	2,481,292	2,459,642	28,537	251,363	358,522	244,659
2003	46,999,305	837,844	0	28,661	154,554	47,001	0	936,692	195,479	397,862	0	0	2,327,045	2,305,832	27,166	240,915	341,298	217,157
2004	48,160,517	855,729	0	28,316	157,766	48,162	67,681	956,155	197,965	417,169	11,402	0	2,368,756	2,347,696	27,655	244,472	420,413	213,626
2005	50,377,053	878,207	0	26,449	165,067	50,378	112,956	1,000,404	205,987	428,933	4,140	0	2,471,835	2,467,929	28,446	253,296	466,029	215,261
2006	46,838,413	803,656	0	23,933	153,483	46,839	106,837	930,204	194,320	404,757	0	0	2,295,048	2,290,589	26,835	255,515	437,768	203,132
2007	42,981,349	741,714	0	20,862	140,921	42,982	98,265	854,063	178,317	372,720	0	0	2,120,911	2,117,245	24,695	233,219	415,811	188,040
2008	37,589,079	656,814	0	20,018	123,536	37,590	87,174	748,700	155,630	325,669	0	0	1,862,364	1,859,432	22,109	201,499	355,951	164,007
2009	30,869,233	299,811	100,548	26,157	101,424	30,870	70,294	614,689	127,745	319,744	4,542	0	1,568,124	1,566,611	17,919	168,752	316,423	156,022
TOTAL	454,707,228	7,804,934	100,548	275,472	1,491,766	454,717	543,208	9,040,997	1,879,192	3,476,926	20,084	0	22,748,219	22,615,977	263,385	2,372,074	3,788,362	2,087,392

# California Authority of Racing Fairs

## National Orange Show Distribution of 2% Location Fees from Advance Deposit Wagering (ADW)

2000	2001	2002	2003	2004	2005	2006	2007	2008	2009	TOTAL
0	0	92,207	155,447	194,613	240,761	275,599	281,874	264,918	263,587	1,769,005

2% Location Fees (ADW)

# California Authority of Racing Fairs

## Cumulative Funding Disbursements to National Orange Show (San Bernardino) SWF 2000-2009

	2000	2001	2002	2003	2004	2005	2006	2007	2008	2009	TOTALS
Infotext Funds	-	-	-	-	-	-	-	-	-	-	-
Equip. Replacement Fund	7,575	35,184	93,574	25,773	13,205	110,729	5,152	13,155	31,674	30,895	366,916
SWF upgrades	-	-	-	-	30,941	-	-	-	-	-	30,941
Total Funding	7,575	35,184	93,574	25,773	44,146	110,729	5,152	13,155	31,674	30,895	397,857

# CALIFORNIA AUTHORITY OF RACING FAIRS COMMISSIONS & PROJECT FUNDING

## SAN MATEO COUNTY FAIR - SAN MATEO

(1) 2% PARI-MUTUEL COMMISSIONS (LOCATION FEES) PAID TO San Mateo County Fair

(2) PROJECT FUNDING PAID THROUGH CARF TO San Mateo County Fair

2000-2009

2000		2001		2002	
(1) 2% Commissions	0	(1) 2% Commissions	0	(1) 2% Commissions	0
(2) Project Funding	0	(2) Project Funding	0	(2) Project Funding	0
<b>TOTAL</b>	<b>0</b>	<b>TOTAL</b>	<b>0</b>	<b>TOTAL</b>	<b>0</b>

2003		2004		2005	
(1) 2% Commissions	0	(1) 2% Commissions	0	(1) 2% Commissions	0
(2) Project Funding	0	(2) Project Funding	0	(2) Project Funding	0
<b>TOTAL</b>	<b>0</b>	<b>TOTAL</b>	<b>0</b>	<b>TOTAL</b>	<b>0</b>

2006		2007		2008	
(1) 2% Commissions	0	(1) 2% Commissions	0	(1) 2% Commissions	638,341
(2) Project Funding	0	(2) Project Funding	50,000	(2) Project Funding	1,684,647
<b>TOTAL</b>	<b>0</b>	<b>TOTAL</b>	<b>50,000</b>	<b>TOTAL</b>	<b>2,322,988</b>

2009		2000-2009	
(1) 2% Commissions	1,848,129	(1) 2% Commissions	2,486,470
(2) Project Funding	0	(2) Project Funding	1,734,647
<b>TOTAL</b>	<b>1,848,129</b>	<b>TOTAL</b>	<b>4,221,117</b>



**\$2,487,000** Pari-Mutuel  
Commissions Paid to  
San Mateo County Fair

**\$1,735,000** Project Funding  
Paid through CARF to  
San Mateo County Fair

NOTE: Does not include \$1.9  
million negotiated through CARF for  
construction of new satellite wagering  
facility (2008).

# California Authority of Racing Fairs

## San Mateo Detailed Distribution Report for Ten Year Comparison

Handle	License Fee	CHRB Support Fee	F&E Fund	City Tax	Equine UC Davis	Workers Comp.	2% Comm. Loc. Fees	N/SCOTW inc. Expense	CMC Promotion	Vanning Stable	PFAB 509	Harness Loc. Fees	Track Comm.	Purses	Owners	Breeders Sires	To Out of State Tracks	Attendance	
2000	0	0	0	0	0	0	0	0	0	0	0	0	0	0	0	0	0	0	0
2001	0	0	0	0	0	0	0	0	0	0	0	0	0	0	0	0	0	0	0
2002	0	0	0	0	0	0	0	0	0	0	0	0	0	0	0	0	0	0	0
2003	0	0	0	0	0	0	0	0	0	0	0	0	0	0	0	0	0	0	0
2004	0	0	0	0	0	0	0	0	0	0	0	0	0	0	0	0	0	0	0
2005	0	0	0	0	0	0	0	0	0	0	0	0	0	0	0	0	0	0	0
2006	0	0	0	0	0	0	0	0	0	0	0	0	0	0	0	0	0	0	0
2007	0	0	0	0	0	0	0	0	0	0	0	0	0	0	0	0	0	0	0
2008	31,773,809	327,056	17,960	104,182	31,774	64,887	631,424	1,163,086	131,058	308,903	0	0	1,583,958	1,593,054	19,066	166,622	349,321	95,251	95,251
2009	83,652,961	510,474	74,190	275,012	83,654	159,690	1,666,740	3,352,678	344,523	847,848	20,999	0	4,115,403	4,133,318	50,126	444,695	1,030,256	225,658	225,658
TOTAL	115,426,770	837,529	162,241	379,194	115,428	224,577	2,298,163	4,515,763	475,581	1,156,750	20,999	0	5,699,361	5,726,373	69,192	611,317	1,379,577	320,909	320,909

# California Authority of Racing Fairs

## San Mateo County Fair Distribution of 2% Location Fees from Advance Deposit Wagering (ADW)

2% Location Fees (ADW)	2000	2001	2002	2003	2004	2005	2006	2007	2008	2009	TOTAL
	0	0	0	0	0	0	0	0	6,917	181,389	188,306

# California Authority of Racing Fairs

## Cumulative Funding Disbursements to San Mateo County Fair (San Mateo) SWF 2000-2009

	2000	2001	2002	2003	2004	2005	2006	2007	2008	2009	TOTALS
Infotext Funds	-	-	-	-	-	-	-	-	-	-	-
Equip. Replacement Fund	-	-	-	-	-	-	-	-	2,889	-	2,889
SWF upgrades	-	-	-	-	-	-	-	50,000	1,681,758	-	1,731,758
Total Funding	-	-	-	-	-	-	-	50,000	1,684,647	-	1,734,647

# CALIFORNIA AUTHORITY OF RACING FAIRS COMMISSIONS & PROJECT FUNDING

## EARL WARREN SHOWGROUNDS - SANTA BARBARA

(1) 2% PARI-MUTUEL COMMISSIONS (LOCATION FEES) PAID TO Earl Warren Showgrounds

(2) PROJECT FUNDING PAID THROUGH CARF TO Earl Warren Showgrounds

2000-2009

2000		2001		2002	
(1) 2% Commissions	204,629	(1) 2% Commissions	228,770	(1) 2% Commissions	260,088
(2) Project Funding	5,203	(2) Project Funding	8,044	(2) Project Funding	3,318
<b>TOTAL</b>	<b>209,832</b>	<b>TOTAL</b>	<b>236,815</b>	<b>TOTAL</b>	<b>263,406</b>

2003		2004		2005	
(1) 2% Commissions	246,062	(1) 2% Commissions	236,379	(1) 2% Commissions	244,311
(2) Project Funding	9,065	(2) Project Funding	19,280	(2) Project Funding	72,937
<b>TOTAL</b>	<b>255,127</b>	<b>TOTAL</b>	<b>255,659</b>	<b>TOTAL</b>	<b>317,248</b>

2006		2007		2008	
(1) 2% Commissions	234,924	(1) 2% Commissions	250,387	(1) 2% Commissions	204,839
(2) Project Funding	389	(2) Project Funding	12,691	(2) Project Funding	6,107
<b>TOTAL</b>	<b>235,312</b>	<b>TOTAL</b>	<b>263,078</b>	<b>TOTAL</b>	<b>210,946</b>

2009		2000-2009	
(1) 2% Commissions	153,963	(1) 2% Commissions	2,264,351
(2) Project Funding	9,268	(2) Project Funding	146,302
<b>TOTAL</b>	<b>163,231</b>	<b>TOTAL</b>	<b>2,410,654</b>

**\$2,265,000** Pari-Mutuel Commissions Paid to Earl Warren Showgrounds

**\$147,000** Project Funding Paid through CARF to Earl Warren Showgrounds

NOTE: Earl Warren Showgrounds closed its satellite operations in 2009 and withdrew from CARF.





# California Authority of Racing Fairs

## Santa Barbara Detailed Distribution Report for Ten Year Comparison

Handle	License Fee	CHRB Support Fee	F&E Fund	City Tax	Equine UC Davis	Workers Comp.	2% Comm. Loc. Fees	N/SCOTW inc. Expense	CMC Promotion	Vanning Stable	PFAB 509	Harness Loc. Fees	Track Comm.	Purses	Owners	Breeders Sires	To Out of State Tracks	Attendance
2000	10,306,292	200,020	0	7,236	33,764	10,307	0	204,629	294,235	41,597	53,568	0	534,651	527,824	6,707	54,067	78,746	40,960
2001	11,516,272	219,697	0	7,253	37,747	11,517	0	228,770	333,504	46,663	63,508	0	594,436	587,761	7,381	60,263	99,740	36,642
2002	12,067,536	231,478	0	6,764	39,541	12,068	0	239,642	346,797	48,756	85,418	0	594,428	587,238	7,816	63,274	114,977	36,207
2003	10,443,345	197,449	0	5,747	34,278	10,444	0	207,747	302,833	42,394	98,120	0	506,865	500,594	6,696	54,711	102,866	32,565
2004	9,743,000	182,681	0	5,763	31,882	9,744	13,208	193,225	287,106	39,310	92,066	1,101	482,461	476,952	6,106	50,387	103,901	30,624
2005	9,864,631	179,908	0	5,228	32,286	9,866	21,630	195,673	292,951	39,295	90,904	0	491,117	487,597	6,021	50,130	110,124	29,306
2006	9,130,812	167,889	0	4,589	29,845	9,131	20,677	180,880	262,987	36,935	87,769	0	452,745	448,896	5,811	49,115	102,643	28,744
2007	9,860,014	182,367	0	4,935	32,266	9,861	21,148	195,552	287,164	39,934	94,850	0	477,943	473,869	6,277	53,640	115,443	27,819
2008	7,250,588	135,577	0	3,548	23,743	7,251	15,862	143,895	209,218	29,343	68,454	0	354,688	351,675	4,646	38,896	82,580	24,934
2009	5,219,011	59,540	17,756	5,012	17,049	5,219	10,683	103,328	141,630	20,787	63,047	0	263,548	260,414	3,533	28,414	74,096	16,921
TOTAL	95,401,498	1,756,606	17,756	56,075	312,402	95,409	103,208	1,893,341	2,758,426	385,013	797,704	1,101	4,752,885	4,702,819	60,993	502,898	985,117	304,722

# California Authority of Racing Fairs

## Earl Warren Showgrounds Distribution of 2% Location Fees from Advance Deposit Wagering (ADW)

2% Location Fees (ADW)	2000	2001	2002	2003	2004	2005	2006	2007	2008	2009	TOTAL
		0	0	20,446	38,315	43,154	48,637	54,044	54,835	60,944	50,635

# California Authority of Racing Fairs

## Cumulative Funding Disbursements to Earl Warren Showgrounds (Santa Barbara) SWF 2000-2009

	2000	2001	2002	2003	2004	2005	2006	2007	2008	2009	TOTALS
	Infotext Funds	-	-	-	-	-	-	-	-	-	-
Equip. Replacement Fund	5,203	8,044	3,318	9,065	17,300	66,087	389	12,691	6,107	6,768	134,972
SWF upgrades	-	-	-	-	1,980	6,850	-	-	-	2,500	11,330
Total Funding	5,203	8,044	3,318	9,065	19,280	72,937	389	12,691	6,107	9,268	146,302

# CALIFORNIA AUTHORITY OF RACING FAIRS COMMISSIONS & PROJECT FUNDING

## SANTA BARBARA COUNTY FAIR - SANTA MARIA

(1) 2% PARI-MUTUEL COMMISSIONS (LOCATION FEES) PAID TO Santa Barbara County Fair

(2) PROJECT FUNDING PAID THROUGH CARF TO Santa Barbara County Fair

2000-2009

2000		2001		2002	
(1) 2% Commissions	226,618	(1) 2% Commissions	190,994	(1) 2% Commissions	208,751
(2) Project Funding	50,679	(2) Project Funding	257,486	(2) Project Funding	814
<b>TOTAL</b>	<b>277,298</b>	<b>TOTAL</b>	<b>448,480</b>	<b>TOTAL</b>	<b>209,564</b>

2003		2004		2005	
(1) 2% Commissions	226,149	(1) 2% Commissions	223,662	(1) 2% Commissions	218,038
(2) Project Funding	4,050	(2) Project Funding	80,063	(2) Project Funding	11,617
<b>TOTAL</b>	<b>230,199</b>	<b>TOTAL</b>	<b>303,725</b>	<b>TOTAL</b>	<b>229,655</b>

2006		2007		2008	
(1) 2% Commissions	208,417	(1) 2% Commissions	200,250	(1) 2% Commissions	177,184
(2) Project Funding	779	(2) Project Funding	10,840	(2) Project Funding	0
<b>TOTAL</b>	<b>209,196</b>	<b>TOTAL</b>	<b>211,090</b>	<b>TOTAL</b>	<b>177,184</b>

2009		2000-2009			
(1) 2% Commissions	150,716	(1) 2% Commissions	2,030,779	\$2,031,000	Pari-Mutuel Commissions Paid to Santa Barbara County Fair
(2) Project Funding	9,978	(2) Project Funding	426,306	\$427,000	Project Funding Paid through CARF to Santa Barbara County Fair
<b>TOTAL</b>	<b>160,694</b>	<b>TOTAL</b>	<b>2,457,084</b>		



# California Authority of Racing Fairs

## Santa Maria Detailed Distribution Report for Ten Year Comparison

Handle	License Fee	CHRB Support Fee	F&E Fund	City Tax	Equine UC Davis	Workers Comp.	2% Comm. Loc. Fees	N/SCOTW inc. Expense	CMC Promotion	Vanning Stable	PFAB 509	Harness Loc. Fees	Track Comm.	Purses	Owners	Breeders Sires	To Out of State Tracks	Attendance
2000	11,379,354	222,913	8,902	37,392	11,380	0	226,618	323,911	46,109	59,090	0	0	580,773	573,332	7,395	59,885	76,550	38,283
2001	9,606,259	183,511	6,599	31,514	9,607	0	190,994	280,224	39,061	52,405	0	0	487,409	482,051	6,091	50,204	75,134	35,611
2002	9,561,973	182,848	5,750	31,264	9,563	0	189,477	277,132	38,732	66,455	0	0	478,202	472,950	6,056	49,839	77,545	34,939
2003	9,852,282	188,406	6,129	32,329	9,853	0	195,934	286,373	40,039	91,698	0	0	483,187	477,384	6,277	51,545	81,094	33,267
2004	9,237,573	174,335	5,559	30,192	9,238	12,950	182,982	268,713	37,207	87,322	620	0	459,517	454,226	5,787	47,771	88,767	30,916
2005	8,671,318	159,549	4,882	28,342	8,672	18,749	171,770	256,278	34,631	79,990	0	0	428,739	425,807	5,300	44,179	88,880	28,437
2006	8,122,857	148,979	4,318	26,548	8,124	17,466	160,898	240,202	33,055	75,951	0	0	392,736	389,928	5,028	44,074	81,379	26,678
2007	7,645,182	141,152	4,152	24,983	7,646	15,769	151,410	225,977	31,066	71,872	0	0	365,779	363,154	4,760	41,206	79,869	27,006
2008	6,553,304	123,112	4,159	21,493	6,554	13,502	130,259	189,026	26,536	62,271	0	0	315,202	312,422	4,224	35,015	66,994	22,646
2009	5,294,805	58,734	5,080	17,328	5,295	11,052	105,020	138,753	21,017	65,360	105	0	266,354	262,800	3,662	28,969	61,973	15,125
TOTAL	85,924,906	1,583,538	19,750	281,386	85,933	89,486	1,705,361	2,486,589	347,454	712,415	725	0	4,257,900	4,214,054	54,580	452,688	778,184	292,908

# California Authority of Racing Fairs

## Santa Barbara County Fair Distribution of 2% Location Fees from Advance Deposit Wagering (ADW)

2% Location Fees (ADW)	2000	2001	2002	2003	2004	2005	2006	2007	2008	2009	TOTAL
		0	0	19,274	30,215	40,680	46,268	47,520	48,840	46,925	45,696

# California Authority of Racing Fairs

## Cumulative Funding Disbursements to Santa Barbara County Fair (Santa Maria) SWF 2000-2009

Infotext Funds	2000	2001	2002	2003	2004	2005	2006	2007	2008	2009	TOTALS
	Equip. Replacement Fund	45,299	7,084	814	4,050	48,267	11,617	779	10,840	-	9,978
SWF upgrades	5,380	250,402	-	-	31,796	-	-	-	-	-	287,578
Total Funding	50,679	257,486	814	4,050	80,063	11,617	779	10,840	-	9,978	426,306

# CALIFORNIA AUTHORITY OF RACING FAIRS COMMISSIONS & PROJECT FUNDING SONOMA COUNTY FAIR - SANTA ROSA

(1) 2% PARI-MUTUEL COMMISSIONS (LOCATION FEES) PAID TO Sonoma County Fair  
(2) PROJECT FUNDING PAID THROUGH CARF TO Sonoma County Fair  
2000-2009

2000		2001		2002	
(1) 2% Commissions	450,316	(1) 2% Commissions	480,340	(1) 2% Commissions	492,139
(2) Project Funding	11,452	(2) Project Funding	47,718	(2) Project Funding	13,430
<b>TOTAL</b>	<b>461,768</b>	<b>TOTAL</b>	<b>528,058</b>	<b>TOTAL</b>	<b>505,569</b>

2003		2004		2005	
(1) 2% Commissions	484,910	(1) 2% Commissions	472,484	(1) 2% Commissions	498,009
(2) Project Funding	54,058	(2) Project Funding	34,628	(2) Project Funding	100,912
<b>TOTAL</b>	<b>538,968</b>	<b>TOTAL</b>	<b>507,111</b>	<b>TOTAL</b>	<b>598,921</b>

2006		2007		2008	
(1) 2% Commissions	499,266	(1) 2% Commissions	449,165	(1) 2% Commissions	374,562
(2) Project Funding	135,964	(2) Project Funding	30,308	(2) Project Funding	13,409
<b>TOTAL</b>	<b>635,230</b>	<b>TOTAL</b>	<b>479,472</b>	<b>TOTAL</b>	<b>387,971</b>

2009		2000-2009		<div style="border: 1px solid black; padding: 5px;"> <p><b>\$4,525,000</b>    <b>Pari-Mutuel Commissions Paid to Sonoma County Fair</b></p> <p><b>\$447,000</b>      <b>Project Funding Paid through CARF to Sonoma County Fair</b></p> </div>	
(1) 2% Commissions	323,362	(1) 2% Commissions	4,524,552		
(2) Project Funding	4,910	(2) Project Funding	446,789		
<b>TOTAL</b>	<b>328,272</b>	<b>TOTAL</b>	<b>4,971,341</b>		



# California Authority of Racing Fairs

## Santa Rosa Detailed Distribution Report for Ten Year Comparison

Handle	License Fee	CHRB Support Fee	F&E Fund	City Tax	Equine UC Davis	Workers Comp.	2% Comm. Loc. Fees	N/SCOTW inc. Expense	CMC Promotion	Vanning Stable	PFAB 509	Harness Loc. Fees	Track Comm.	Purses	Owners	Breeders Sires	To Out of State Tracks	Attendance
2000	22,646,727	240,297	18,480	74,302	22,648	0	450,316	832,444	93,838	131,211	0	0	1,180,181	1,182,863	13,383	113,847	176,218	110,459
2001	24,187,576	252,880	18,481	79,256	24,188	0	480,340	912,476	100,530	136,900	0	0	1,231,850	1,237,101	13,915	120,781	202,849	111,562
2002	23,248,132	242,442	15,940	76,118	23,249	0	461,319	879,175	96,643	135,533	0	0	1,183,736	1,189,353	13,287	115,778	206,091	103,592
2003	21,662,550	227,250	14,577	71,061	21,663	0	430,672	808,008	90,127	162,949	0	0	1,087,333	1,090,706	12,452	108,380	190,814	95,808
2004	20,559,067	213,984	13,923	67,180	20,560	26,253	407,153	762,919	84,310	156,165	7,870	0	1,034,416	1,038,380	11,793	101,733	211,654	92,851
2005	20,972,005	222,104	11,683	68,534	20,973	42,343	415,360	746,004	84,925	159,040	4,677	0	1,056,653	1,065,335	11,954	103,317	232,395	88,937
2006	20,506,357	213,486	11,572	67,013	20,507	41,097	406,139	734,061	84,694	169,511	0	0	1,013,456	1,021,337	11,910	109,600	227,814	85,410
2007	17,422,598	183,421	8,826	56,821	17,423	36,414	344,369	601,663	71,705	165,469	0	0	875,980	881,048	10,156	92,994	202,215	76,744
2008	14,388,964	155,592	6,822	47,030	14,389	29,357	285,032	513,103	59,077	140,207	0	0	706,880	711,114	8,620	75,962	165,902	71,845
2009	12,059,592	78,512	9,880	39,323	12,060	23,055	238,318	460,449	49,274	121,157	2,676	0	583,112	585,991	7,144	64,154	156,346	62,627
TOTAL	197,653,568	2,029,967	130,183	646,639	197,663	198,520	3,919,018	7,250,301	815,123	1,478,143	15,223	0	9,953,598	10,003,220	114,612	1,006,545	1,972,299	899,835

# California Authority of Racing Fairs

## Sonoma County Fair Distribution of 2% Location Fees from Advance Deposit Wagering (ADW)

2% Location Fees (ADW)	2000	2001	2002	2003	2004	2005	2006	2007	2008	2009	TOTAL
		0	0	30,820	54,238	65,331	82,649	93,128	104,795	89,531	85,044

# California Authority of Racing Fairs

## Cumulative Funding Disbursements to Sonoma County Fair (Santa Rosa) SWF 2000-2009

	2000	2001	2002	2003	2004	2005	2006	2007	2008	2009	TOTALS
	Infotext Funds	-	-	-	-	-	-	26,689	754	691	-
Equip. Replacement Fund	11,452	10,718	13,430	54,058	34,628	100,912	10,286	29,554	12,717	4,910	282,665
SWF upgrades	-	37,000	-	-	-	-	98,989	-	-	-	135,989
Total Funding	11,452	47,718	13,430	54,058	34,628	100,912	135,964	30,308	13,409	4,910	446,789



# CALIFORNIA AUTHORITY OF RACING FAIRS COMMISSIONS & PROJECT FUNDING

## RIVERSIDE COUNTY FAIR - SHALIMAR/INDIO

(1) 2% PARI-MUTUEL COMMISSIONS (LOCATION FEES) PAID TO Riverside County Fair

(2) PROJECT FUNDING PAID THROUGH CARF TO Riverside County Fair

2000-2009

2000		2001		2002	
(1) 2% Commissions	243,486	(1) 2% Commissions	225,367	(1) 2% Commissions	200,651
(2) Project Funding	54,668	(2) Project Funding	1,100	(2) Project Funding	6,814
<b>TOTAL</b>	<b>298,155</b>	<b>TOTAL</b>	<b>226,467</b>	<b>TOTAL</b>	<b>207,464</b>

2003		2004		2005	
(1) 2% Commissions	186,094	(1) 2% Commissions	213,447	(1) 2% Commissions	204,918
(2) Project Funding	9,273	(2) Project Funding	5,944	(2) Project Funding	58,634
<b>TOTAL</b>	<b>195,366</b>	<b>TOTAL</b>	<b>219,391</b>	<b>TOTAL</b>	<b>263,551</b>

2006		2007		2008	
(1) 2% Commissions	224,709	(1) 2% Commissions	254,383	(1) 2% Commissions	213,029
(2) Project Funding	2,367	(2) Project Funding	5,047	(2) Project Funding	4,038
<b>TOTAL</b>	<b>227,075</b>	<b>TOTAL</b>	<b>259,430</b>	<b>TOTAL</b>	<b>217,067</b>

2009		2000-2009		Summary	
(1) 2% Commissions	184,608	(1) 2% Commissions	2,150,692	\$2,151,000	Pari-Mutuel Commissions Paid to Riverside County Fair
(2) Project Funding	32,985	(2) Project Funding	180,869	\$181,000	Project Funding Paid through CARF to Riverside County Fair
<b>TOTAL</b>	<b>217,593</b>	<b>TOTAL</b>	<b>2,331,560</b>		



# California Authority of Racing Fairs

## Shalimar/Indio Detailed Distribution Report for Ten Year Comparison

Handle	License Fee	CHRB Support Fee	F&E Fund	City Tax	Equine UC Davis	Workers Comp.	2% Comm. Loc. Fees	N/SCOTW inc. Expense	CMC Promotion	Vanning Stable	PFAB 509	Harness Loc. Fees	Track Comm.	Purses	Owners	Breeders Sires	To Out of State Tracks	Attendance
2000	12,253,286	234,029	7,391	40,175	12,255	0	243,486	362,684	49,952	61,207	0	0	632,212	624,204	7,657	63,774	81,259	42,357
2001	11,358,580	214,142	6,531	37,185	11,360	0	225,367	339,187	46,396	59,986	0	0	582,300	576,062	6,973	58,862	83,642	40,324
2002	9,353,597	178,244	4,489	30,563	9,355	0	185,232	273,229	38,011	63,700	0	0	472,320	467,367	5,816	48,573	71,927	39,221
2003	7,876,618	149,049	3,862	25,805	7,878	0	156,392	233,132	32,111	71,558	0	0	385,980	381,535	4,903	40,953	61,198	39,767
2004	9,154,110	174,308	4,329	29,849	9,155	12,174	180,904	265,460	36,798	86,597	1,000	0	445,120	440,034	5,738	47,288	85,376	43,287
2005	8,078,958	152,038	0	3,615	8,080	18,897	159,366	233,566	32,218	75,949	478	0	397,198	394,168	5,033	41,423	81,676	40,833
2006	9,155,394	173,699	0	4,396	9,156	22,279	180,647	260,830	36,795	88,651	0	0	448,526	444,468	5,868	48,716	92,064	41,598
2007	10,098,170	192,118	0	4,357	10,099	25,548	199,537	283,785	40,581	98,573	0	0	507,815	503,338	6,524	53,696	103,655	38,235
2008	7,625,050	147,238	0	3,494	7,626	19,294	151,416	212,561	30,696	74,256	0	0	382,193	378,546	5,015	40,642	72,151	31,340
2009	6,624,910	80,818	19,783	21,671	6,625	15,411	131,340	183,665	26,588	78,043	44	0	340,473	337,066	4,373	35,965	76,304	28,577
TOTAL	91,578,672	1,695,683	19,783	299,258	91,589	113,603	1,813,687	2,648,099	370,145	758,520	1,522	0	4,594,139	4,546,788	57,898	479,891	809,254	385,539

# California Authority of Racing Fairs

## Riverside County Fair Distribution of 2% Location Fees from Advance Deposit Wagering (ADW)

2000	2001	2002	2003	2004	2005	2006	2007	2008	2009	TOTAL
0	0	15,419	29,702	32,544	45,552	44,062	54,845	61,613	53,267	337,005

2% Location Fees (ADW)

# California Authority of Racing Fairs

## Cumulative Funding Disbursements to Riverside County Fair (Shalimar/Indio) SWF 2000-2009

	2000	2001	2002	2003	2004	2005	2006	2007	2008	2009	TOTALS
Infotext Funds	12,986	-	-	-	-	-	-	-	-	-	12,986
Equip. Replacement Fund	41,682	1,100	6,814	9,273	3,376	58,634	2,367	5,047	4,038	27,985	160,315
SWF upgrades	-	-	-	-	2,568	-	-	-	-	5,000	7,568
Total Funding	54,668	1,100	6,814	9,273	5,944	58,634	2,367	5,047	4,038	32,985	180,869

# CALIFORNIA AUTHORITY OF RACING FAIRS COMMISSIONS & PROJECT FUNDING

## SAN JOAQUIN COUNTY FAIR - STOCKTON

(1) 2% PARI-MUTUEL COMMISSIONS (LOCATION FEES) PAID TO San Joaquin County Fair

(2) PROJECT FUNDING PAID THROUGH CARF TO San Joaquin County Fair

2000-2009

2000		2001		2002	
(1) 2% Commissions	626,984	(1) 2% Commissions	661,638	(1) 2% Commissions	711,714
(2) Project Funding	96,824	(2) Project Funding	1,990	(2) Project Funding	47,912
<b>TOTAL</b>	<b>723,808</b>	<b>TOTAL</b>	<b>663,628</b>	<b>TOTAL</b>	<b>759,626</b>

2003		2004		2005	
(1) 2% Commissions	725,726	(1) 2% Commissions	707,292	(1) 2% Commissions	734,409
(2) Project Funding	90,813	(2) Project Funding	5,618	(2) Project Funding	70,446
<b>TOTAL</b>	<b>816,540</b>	<b>TOTAL</b>	<b>712,910</b>	<b>TOTAL</b>	<b>804,855</b>

2006		2007		2008	
(1) 2% Commissions	716,048	(1) 2% Commissions	684,041	(1) 2% Commissions	622,499
(2) Project Funding	10,082	(2) Project Funding	9,830	(2) Project Funding	4,355
<b>TOTAL</b>	<b>726,130</b>	<b>TOTAL</b>	<b>693,871</b>	<b>TOTAL</b>	<b>626,854</b>

2009		2000-2009	
(1) 2% Commissions	543,181	(1) 2% Commissions	6,733,531
(2) Project Funding	0	(2) Project Funding	337,872
<b>TOTAL</b>	<b>543,181</b>	<b>TOTAL</b>	<b>7,071,403</b>

**\$6,734,000** Pari-Mutuel Commissions Paid to San Joaquin County Fair

**\$338,000** Project Funding Paid through CARF to San Joaquin County Fair



# California Authority of Racing Fairs

## Stockton Detailed Distribution Report for Ten Year Comparison

Handle	License Fee	CHRB Support Fee	F&E Fund	City Tax	Equine UC Davis	Workers Comp.	2% Comm. Loc. Fees	N/SCOTW inc. Expense	CMC Promotion	Vanning Stable	PFAB 509	Harness Loc. Fees	Track Comm.	Purses	Owners	Breeders Sires	To Out of State Tracks	Attendance	
																			2000
2000	31,468,061	324,788	0	27,699	103,453	31,469	0	626,984	1,209,275	131,334	177,905	0	1,647,193	1,646,654	18,221	157,128	247,633	142,623	
2001	33,225,183	336,409	0	26,057	109,170	33,226	0	661,638	1,305,523	139,521	181,235	0	1,718,290	1,721,188	18,507	164,715	281,508	139,479	
2002	33,468,407	340,328	0	24,185	109,871	33,470	0	665,885	1,302,361	140,100	191,115	0	1,715,138	1,718,493	18,799	166,069	302,216	143,939	
2003	32,503,776	330,823	0	24,596	106,870	32,505	0	647,697	1,266,226	136,044	240,589	0	1,634,896	1,637,090	18,408	161,708	294,288	140,836	
2004	30,679,101	312,072	0	21,091	100,674	30,680	38,078	610,148	1,176,650	126,996	225,561	12,614	0	1,549,180	1,552,925	17,058	150,993	307,785	132,381
2005	30,801,909	312,149	0	18,132	101,020	30,803	61,754	612,243	1,164,316	126,716	218,704	5,995	0	1,578,860	1,594,513	16,489	149,801	325,879	128,905
2006	29,167,763	289,090	0	16,916	95,665	29,169	59,404	579,787	1,105,815	122,422	227,502	0	1,490,180	1,503,386	15,953	156,801	309,598	121,768	
2007	26,979,894	273,372	0	14,574	88,440	26,981	55,732	536,000	998,493	112,944	242,156	0	1,370,770	1,381,232	14,919	145,329	296,706	114,361	
2008	24,370,467	254,810	0	13,215	80,020	24,371	49,334	484,972	910,872	101,430	228,026	0	1,209,912	1,219,010	14,072	129,071	274,706	101,817	
2009	20,109,643	117,017	38,325	18,138	65,999	20,110	39,850	399,994	819,254	83,697	191,505	4,639	0	1,002,367	11,339	106,758	243,703	90,003	
TOTAL	292,774,203	2,890,857	38,325	204,603	961,183	292,784	304,153	5,825,349	11,258,783	1,221,204	2,124,299	23,248	0	14,976,859	163,766	1,488,371	2,884,021	1,256,112	

# California Authority of Racing Fairs

## San Joaquin County Fair Distribution of 2% Location Fees from Advance Deposit Wagering (ADW)

2% Location Fees (ADW)	TOTAL										
	2000	2001	2002	2003	2004	2005	2006	2007	2008	2009	TOTAL
0	0	0	45,829	78,029	97,144	122,166	136,261	148,040	137,527	143,186	908,182

# California Authority of Racing Fairs

## Cumulative Funding Disbursements to San Joaquin County Fair (Stockton) SWF 2000-2009

	TOTALS										
	2000	2001	2002	2003	2004	2005	2006	2007	2008	2009	TOTALS
Infotext Funds	23,076	-	-	-	-	-	-	-	-	-	23,076
Equip. Replacement Fund	998	1,990	47,912	90,813	5,618	11,326	6,782	9,830	4,355	-	179,625
SWF upgrades	72,750	-	-	-	-	59,121	3,300	-	-	-	135,171
Total Funding	96,824	1,990	47,912	90,813	5,618	70,446	10,082	9,830	4,355	-	337,872

# CALIFORNIA AUTHORITY OF RACING FAIRS COMMISSIONS & PROJECT FUNDING

## TULARE COUNTY FAIR - TULARE

(1) 2% PARI-MUTUEL COMMISSIONS (LOCATION FEES) PAID TO Tulare County Fair

(2) PROJECT FUNDING PAID THROUGH CARF TO Tulare County Fair

2000-2009

2000		2001		2002	
(1) 2% Commissions	106,471	(1) 2% Commissions	103,233	(1) 2% Commissions	119,332
(2) Project Funding	0	(2) Project Funding	3,515	(2) Project Funding	0
<b>TOTAL</b>	<b>106,471</b>	<b>TOTAL</b>	<b>106,748</b>	<b>TOTAL</b>	<b>119,332</b>

2003		2004		2005	
(1) 2% Commissions	116,733	(1) 2% Commissions	122,194	(1) 2% Commissions	128,161
(2) Project Funding	243,151	(2) Project Funding	32,511	(2) Project Funding	5,645
<b>TOTAL</b>	<b>359,884</b>	<b>TOTAL</b>	<b>154,704</b>	<b>TOTAL</b>	<b>133,805</b>

2006		2007		2008	
(1) 2% Commissions	126,485	(1) 2% Commissions	115,938	(1) 2% Commissions	97,761
(2) Project Funding	0	(2) Project Funding	271	(2) Project Funding	9,167
<b>TOTAL</b>	<b>126,485</b>	<b>TOTAL</b>	<b>116,209</b>	<b>TOTAL</b>	<b>106,928</b>

2009		2000-2009	
(1) 2% Commissions	89,070	(1) 2% Commissions	1,125,378
(2) Project Funding	1,854	(2) Project Funding	296,113
<b>TOTAL</b>	<b>90,924</b>	<b>TOTAL</b>	<b>1,421,491</b>

\$1,126,000	Pari-Mutuel Commissions Paid to Tulare County Fair
\$297,000	Project Funding Paid through CARF to Tulare County Fair





# California Authority of Racing Fairs

## Tulare Detailed Distribution Report for Ten Year Comparison

Handle	License Fee	CHRB Support Fee	F&E Fund	City Tax	Equine UC Davis	Workers Comp.	2% Comm. Loc. Fees	N/SCOTW inc. Expense	CMC Promotion	Vanning Stable	PFAB 509	Harness Loc. Fees	Track Comm.	Purses	Owners	Breeders Sires	To Out of State Tracks	Attendance
2000	5,363,494	0	4,365	17,568	5,365	0	106,471	186,360	21,647	34,798	0	0	271,454	271,231	3,545	27,514	43,725	30,666
2001	5,204,908	0	4,379	17,034	5,206	0	103,233	183,533	21,012	33,583	0	0	263,776	263,288	3,418	26,621	46,422	30,436
2002	5,648,914	0	4,392	18,481	5,650	0	112,009	200,595	22,745	38,152	0	0	279,264	279,215	3,742	28,854	57,084	30,157
2003	5,219,270	0	3,940	17,113	5,220	0	103,713	182,012	21,055	45,291	0	0	254,066	253,763	3,462	26,793	53,611	28,065
2004	5,391,530	0	4,113	17,601	5,392	6,352	106,822	185,949	21,503	46,906	701	0	261,454	261,315	3,532	27,403	59,899	27,769
2005	5,400,896	0	4,493	17,626	5,402	10,092	106,822	175,727	21,132	46,701	4	0	265,243	265,420	3,513	27,214	64,368	26,015
2006	5,195,254	0	3,511	16,960	5,196	9,670	102,790	174,427	20,837	48,814	0	0	250,515	250,533	3,438	27,263	64,023	24,051
2007	4,536,042	0	3,214	14,806	4,537	8,432	89,734	154,133	18,197	48,724	0	0	214,621	214,148	3,000	23,713	57,215	22,159
2008	3,789,641	0	2,313	12,383	3,790	6,612	75,045	130,397	15,165	41,386	0	0	177,139	176,685	2,540	19,660	47,615	18,812
2009	3,384,271	6,796	3,320	11,058	3,385	5,569	67,015	123,661	13,452	39,526	108	0	154,704	154,030	2,324	17,667	45,719	14,172
TOTAL	49,134,217	6,796	37,240	160,630	49,142	46,726	973,504	1,696,795	196,743	423,880	813	0	2,392,236	2,389,628	32,516	252,702	539,682	252,302

# California Authority of Racing Fairs

## Tulare County Fair Distribution of 2% Location Fees from Advance Deposit Wagering (ADW)

2000	2001	2002	2003	2004	2005	2006	2007	2008	2009	TOTAL
0	0	7,323	13,020	15,522	21,338	23,695	26,204	22,716	22,055	151,874

2% Location Fees (ADW)

# California Authority of Racing Fairs

## Cumulative Funding Disbursements to Tulare County Fair (Tulare) SWF 2000-2009

	2000	2001	2002	2003	2004	2005	2006	2007	2008	2009	TOTALS
Infotext Funds	-	-	-	-	-	-	-	-	-	-	-
Equip. Replacement Fund	-	3,515	-	33,200	-	-	-	-	8,431	1,854	46,999
SWF upgrades	-	-	-	209,951	32,511	5,645	-	271	736	-	249,113
Total Funding	-	3,515	-	243,151	32,511	5,645	-	271	9,167	1,854	296,113

# CALIFORNIA AUTHORITY OF RACING FAIRS COMMISSIONS & PROJECT FUNDING

## STANISLAUS COUNTY FAIR - TURLOCK

(1) 2% PARI-MUTUEL COMMISSIONS (LOCATION FEES) PAID TO Stanislaus County Fair

(2) PROJECT FUNDING PAID THROUGH CARF TO Stanislaus County Fair

2000-2009

2000		2001		2002	
(1) 2% Commissions	211,561	(1) 2% Commissions	212,636	(1) 2% Commissions	222,783
(2) Project Funding	37,501	(2) Project Funding	114,318	(2) Project Funding	5,008
<b>TOTAL</b>	<b>249,062</b>	<b>TOTAL</b>	<b>326,954</b>	<b>TOTAL</b>	<b>227,791</b>
2003		2004		2005	
(1) 2% Commissions	230,522	(1) 2% Commissions	227,592	(1) 2% Commissions	258,093
(2) Project Funding	87,321	(2) Project Funding	93,401	(2) Project Funding	32,139
<b>TOTAL</b>	<b>317,843</b>	<b>TOTAL</b>	<b>320,992</b>	<b>TOTAL</b>	<b>290,232</b>
2006		2007		2008	
(1) 2% Commissions	255,370	(1) 2% Commissions	254,033	(1) 2% Commissions	240,722
(2) Project Funding	4,288	(2) Project Funding	18,749	(2) Project Funding	5,506
<b>TOTAL</b>	<b>259,658</b>	<b>TOTAL</b>	<b>272,781</b>	<b>TOTAL</b>	<b>246,228</b>
2009		2000-2009		<div style="border: 1px solid black; padding: 5px;"> <p><b>\$2,334,000</b> Pari-Mutuel Commissions Paid to Stanislaus County Fair</p> <p><b>\$411,000</b> Project Funding Paid through CARF to Stanislaus County Fair</p> </div>	
(1) 2% Commissions	220,458	(1) 2% Commissions	2,333,768		
(2) Project Funding	12,095	(2) Project Funding	410,326		
<b>TOTAL</b>	<b>232,554</b>	<b>TOTAL</b>	<b>2,744,094</b>		



# California Authority of Racing Fairs

## Turlock Detailed Distribution Report for Ten Year Comparison

Handle	License Fee	CHRB Support Fee	F&E Fund	City Tax	Equine UC Davis	Workers Comp.	2% Comm. Loc. Fees	N/SCOTW inc. Expense	CMC Promotion	Vanning Stable	PFAB 509	Harness Loc. Fees	Track Comm.	Purses	Owners	Breeders Sires	To Out of State Tracks	Attendance
10,639,611	119,778	0	10,926	34,908	10,640	0	211,561	367,283	42,742	71,044	0	0	544,771	545,577	7,296	54,897	88,410	51,611
10,702,076	120,294	0	10,253	35,085	10,703	0	212,636	369,495	42,848	72,178	0	0	540,751	541,166	7,369	55,283	98,625	47,107
10,490,153	119,144	0	9,282	34,367	10,491	0	208,288	358,722	41,900	74,133	0	0	527,235	527,895	7,281	54,190	101,645	45,279
10,367,729	116,729	0	9,284	34,021	10,368	0	206,185	352,296	41,429	94,037	0	0	513,350	513,498	7,217	53,732	105,085	42,923
9,927,460	113,579	0	7,647	32,483	9,929	11,449	196,866	326,459	39,153	90,427	118	0	501,277	500,851	6,857	51,049	117,026	40,350
11,018,295	122,856	0	8,540	36,062	11,019	20,112	218,561	360,949	42,642	96,819	27	0	567,502	567,190	7,319	55,313	138,981	40,284
10,448,528	116,965	0	6,912	34,214	10,449	19,165	207,354	337,635	41,678	102,419	0	0	529,866	528,509	7,206	54,643	138,773	38,519
10,139,943	114,677	0	6,205	33,178	10,140	18,545	201,078	328,177	40,482	112,567	0	0	506,711	504,785	6,941	52,936	138,818	36,660
9,546,126	109,659	0	5,567	31,273	9,546	17,498	189,529	321,512	38,111	106,701	0	0	472,148	470,456	6,582	49,757	128,196	33,904
8,312,838	54,271	17,481	8,397	27,209	8,313	13,787	164,900	309,763	33,133	96,763	324	0	404,241	402,507	5,727	43,398	122,814	28,876
101,592,757	1,107,954	17,481	83,012	332,799	101,599	100,555	2,016,957	3,432,292	404,118	917,087	468	0	5,107,852	5,102,433	69,796	525,197	1,178,372	405,513

# California Authority of Racing Fairs

## Stanislaus County Fair Distribution of 2% Location Fees from Advance Deposit Wagering (ADW)

2% Location Fees (ADW)	2000	2001	2002	2003	2004	2005	2006	2007	2008	2009	TOTAL
	0	0	14,495	24,337	30,726	39,532	48,016	52,954	51,193	55,558	316,811

# California Authority of Racing Fairs

## Cumulative Funding Disbursements to Stanislaus County Fair (Turlock) SWF 2000-2009

	2000	2001	2002	2003	2004	2005	2006	2007	2008	2009	TOTALS
Infotext Funds	-	-	-	-	-	-	-	-	-	-	-
Equip. Replacement Fund	10,661	8,517	5,008	87,321	84,158	8,528	4,288	18,749	5,506	12,095	244,832
SWF upgrades	26,840	105,801	-	-	9,242	23,611	-	-	-	-	165,494
Total Funding	37,501	114,318	5,008	87,321	93,401	32,139	4,288	18,749	5,506	12,095	410,326

# CALIFORNIA AUTHORITY OF RACING FAIRS COMMISSIONS & PROJECT FUNDING

## SOLANO COUNTY FAIR - VALLEJO

(1) 2% PARI-MUTUEL COMMISSIONS (LOCATION FEES) PAID TO Solano County Fair

(2) PROJECT FUNDING PAID THROUGH CARF TO Solano County Fair

2000-2009

2000		2001		2002	
(1) 2% Commissions	544,831	(1) 2% Commissions	564,080	(1) 2% Commissions	573,984
(2) Project Funding	75,993	(2) Project Funding	2,871	(2) Project Funding	225
<b>TOTAL</b>	<b>620,824</b>	<b>TOTAL</b>	<b>566,951</b>	<b>TOTAL</b>	<b>574,209</b>

2003		2004		2005	
(1) 2% Commissions	595,674	(1) 2% Commissions	600,225	(1) 2% Commissions	604,033
(2) Project Funding	1,669	(2) Project Funding	67,983	(2) Project Funding	2,294
<b>TOTAL</b>	<b>597,343</b>	<b>TOTAL</b>	<b>668,208</b>	<b>TOTAL</b>	<b>606,328</b>

2006		2007		2008	
(1) 2% Commissions	589,282	(1) 2% Commissions	565,867	(1) 2% Commissions	504,037
(2) Project Funding	567	(2) Project Funding	544	(2) Project Funding	437
<b>TOTAL</b>	<b>589,850</b>	<b>TOTAL</b>	<b>566,411</b>	<b>TOTAL</b>	<b>504,474</b>

2009		2000-2009		Summary	
(1) 2% Commissions	466,777	(1) 2% Commissions	5,608,790	\$5,609,000	Pari-Mutuel Commissions Paid to Solano County Fair
(2) Project Funding	23,287	(2) Project Funding	175,871	\$176,000	Project Funding Paid through CARF to Solano County Fair
<b>TOTAL</b>	<b>490,064</b>	<b>TOTAL</b>	<b>5,784,661</b>		



# California Authority of Racing Fairs

## Vallejo Detailed Distribution Report for Ten Year Comparison

Handle	License Fee	CHRB Support Fee	F&E Fund	City Tax	Equine UC Davis	Workers Comp.	2% Comm.		N/SCOTW inc. Expense	CMC Promotion	Vanning Stable	PFAB 509	Harness Loc. Fees	Track Comm.	Purses	Owners	Breeders Sires	To Out of State Tracks	Attendance
							Loc. Fees	Comp.											
2000	27,336,943	281,518	0	20,964	89,897	27,338	0	544,831	1,038,288	114,118	154,651	0	0	1,432,286	1,432,203	15,806	136,730	227,662	106,070
2001	28,315,686	283,467	0	19,045	93,074	28,317	0	564,080	1,106,205	119,410	151,288	0	0	1,479,870	1,482,651	15,440	140,192	249,706	116,782
2002	26,936,950	272,492	0	16,100	88,467	26,938	0	536,160	1,038,650	113,291	150,926	0	0	1,408,312	1,411,360	14,771	133,546	242,512	119,142
2003	26,732,786	269,394	0	15,967	87,913	26,734	0	532,806	1,036,468	112,647	191,106	0	0	1,372,835	1,375,075	14,585	132,609	243,967	115,782
2004	26,140,596	262,808	0	14,585	85,808	26,142	32,296	520,048	1,008,697	108,932	186,639	12,330	0	1,345,558	1,347,799	14,074	128,276	264,217	112,859
2005	25,080,669	251,431	0	12,336	82,301	25,082	52,147	498,798	948,120	103,721	174,063	8,828	0	1,317,091	1,329,352	13,104	121,790	271,761	107,742
2006	24,045,337	237,730	0	11,056	78,928	24,046	50,616	478,348	906,877	101,311	183,877	0	0	1,256,586	1,266,595	12,949	129,396	263,227	103,262
2007	22,251,738	221,788	0	11,515	73,010	22,253	47,793	442,485	844,928	93,553	196,305	0	0	1,147,712	1,155,441	12,094	118,301	247,310	98,722
2008	19,625,592	201,101	0	9,383	64,485	19,626	41,527	390,817	748,918	82,202	178,430	0	0	999,217	1,006,604	11,006	102,852	222,130	82,505
2009	17,651,053	102,350	32,153	15,088	57,983	17,652	35,328	351,411	737,685	73,746	164,224	6,447	0	889,887	896,399	9,712	92,211	214,786	73,056
TOTAL	244,117,350	2,384,080	32,153	146,040	801,865	244,127	259,707	4,859,783	9,414,837	1,022,930	1,731,509	27,605	0	12,649,356	12,703,478	133,541	1,235,903	2,447,279	1,035,922

# California Authority of Racing Fairs

## Solano County Fair Distribution of 2% Location Fees from Advance Deposit Wagering (ADW)

2% Location Fees (ADW)	2000	2001	2002	2003	2004	2005	2006	2007	2008	2009	TOTAL
		0	0	37,824	62,867	80,177	105,235	110,934	123,381	113,221	115,366

# California Authority of Racing Fairs

## Cumulative Funding Disbursements to Solano County Fair (Vallejo) SWF 2000-2009

Infotext Funds	2000	2001	2002	2003	2004	2005	2006	2007	2008	2009	TOTALS
	Equip. Replacement Fund	3,243	2,871	225	1,669	67,983	2,294	567	544	437	23,287
SWF upgrades	72,750	-	-	-	-	-	-	-	-	-	72,750
Total Funding	75,993	2,871	225	1,669	67,983	2,294	567	544	437	23,287	175,871

# CALIFORNIA AUTHORITY OF RACING FAIRS COMMISSIONS & PROJECT FUNDING

## VENTURA COUNTY FAIR - VENTURA

(1) 2% PARI-MUTUEL COMMISSIONS (LOCATION FEES) PAID TO Ventura County Fair

(2) PROJECT FUNDING PAID THROUGH CARF TO Ventura County Fair

2000-2009

2000		2001		2002	
(1) 2% Commissions	922,351	(1) 2% Commissions	964,209	(1) 2% Commissions	993,975
(2) Project Funding	1,700	(2) Project Funding	23,931	(2) Project Funding	52,083
<b>TOTAL</b>	<b>924,051</b>	<b>TOTAL</b>	<b>988,140</b>	<b>TOTAL</b>	<b>1,046,058</b>

2003		2004		2005	
(1) 2% Commissions	1,026,213	(1) 2% Commissions	995,798	(1) 2% Commissions	958,145
(2) Project Funding	81,405	(2) Project Funding	58,648	(2) Project Funding	35,722
<b>TOTAL</b>	<b>1,107,618</b>	<b>TOTAL</b>	<b>1,054,446</b>	<b>TOTAL</b>	<b>993,867</b>

2006		2007		2008	
(1) 2% Commissions	976,951	(1) 2% Commissions	995,603	(1) 2% Commissions	890,210
(2) Project Funding	18,372	(2) Project Funding	14,743	(2) Project Funding	16,033
<b>TOTAL</b>	<b>995,323</b>	<b>TOTAL</b>	<b>1,010,346</b>	<b>TOTAL</b>	<b>906,243</b>

2009		2000-2009	
(1) 2% Commissions	784,924	(1) 2% Commissions	9,508,380
(2) Project Funding	22,715	(2) Project Funding	325,351
<b>TOTAL</b>	<b>807,639</b>	<b>TOTAL</b>	<b>9,833,731</b>

<b>\$9,509,000</b>	<b>Pari-Mutuel Commissions Paid to Ventura County Fair</b>
<b>\$326,000</b>	<b>Project Funding Paid through CARF to Ventura County Fair</b>





# California Authority of Racing Fairs

## Ventura Detailed Distribution Report for Ten Year Comparison

	Handle	License Fee	CHRB Support Fee	F&E Fund	City Tax	Equine UC Davis	Workers Comp.	2% Comm. Loc. Fees	N/SCOTW inc. Expense	CMC Promotion	Vanning Stable	PFAB 509	Harness Loc. Fees	Track Comm.	Purses	Owners	Breeders Sires	To Out of State Tracks	Attendance
2000	46,363,544	867,768	0	32,390	152,188	46,365	0	922,351	1,397,963	189,673	229,225	0	0	2,417,240	2,388,135	28,700	240,812	333,250	161,381
2001	48,484,284	900,003	0	30,903	159,095	48,485	0	964,209	1,471,497	198,710	255,370	0	0	2,498,340	2,471,549	29,684	251,318	388,177	155,622
2002	45,687,264	845,393	0	25,683	149,665	45,688	0	907,058	1,385,192	186,965	305,980	0	0	2,332,186	2,305,585	27,899	236,418	394,104	151,434
2003	44,228,324	818,444	0	25,000	145,467	44,229	0	881,618	1,346,039	181,820	396,538	0	0	2,212,902	2,186,836	27,069	229,697	371,322	140,267
2004	40,936,251	749,991	0	22,595	134,038	40,937	54,652	812,349	1,246,872	166,911	371,731	4,745	0	2,043,124	2,021,289	24,618	210,250	386,565	128,141
2005	37,978,869	681,562	0	19,450	124,205	37,980	82,843	752,757	1,160,806	152,551	338,433	2,507	0	1,889,706	1,880,424	22,406	191,808	389,355	117,438
2006	38,796,856	691,692	0	17,912	126,955	38,798	84,761	769,422	1,179,686	158,612	357,376	0	0	1,924,377	1,913,035	23,669	207,483	407,383	116,714
2007	38,437,440	681,075	0	19,344	125,775	38,439	86,236	762,275	1,175,326	157,353	351,816	0	0	1,920,521	1,910,366	23,301	206,394	413,905	109,634
2008	32,830,918	592,204	0	16,330	107,858	32,832	71,762	653,682	984,620	134,381	299,760	0	0	1,639,690	1,630,696	20,345	175,721	349,196	96,429
2009	27,944,715	269,733	99,006	23,057	91,782	27,945	57,050	556,257	842,824	114,399	305,361	3,359	0	1,432,078	1,425,079	17,108	153,093	332,365	88,768
TOTAL	401,688,465	7,097,864	99,006	232,665	1,317,028	401,698	437,304	7,981,978	12,190,824	1,641,374	3,211,592	10,610	0	20,310,164	20,132,995	244,800	2,102,993	3,765,622	1,265,828

# California Authority of Racing Fairs

## Ventura County Fair Distribution of 2% Location Fees from Advance Deposit Wagering (ADW)

	2000	2001	2002	2003	2004	2005	2006	2007	2008	2009	TOTAL
2% Location Fees (ADW)	0	0	86,917	144,595	183,449	205,388	207,529	233,328	236,529	228,668	1,526,403

# California Authority of Racing Fairs

## Cumulative Funding Disbursements to Ventura County Fair (Ventura) SWF 2000-2009

	2000	2001	2002	2003	2004	2005	2006	2007	2008	2009	TOTALS
Infotext Funds	-	-	-	-	-	-	-	-	-	-	-
Equip. Replacement Fund	1,700	23,931	52,083	81,405	51,324	35,722	18,372	14,743	16,033	22,715	318,027
SWF upgrades	-	-	-	-	7,324	-	-	-	-	-	7,324
Total Funding	1,700	23,931	52,083	81,405	58,648	35,722	18,372	14,743	16,033	22,715	325,351

# CALIFORNIA AUTHORITY OF RACING FAIRS COMMISSIONS & PROJECT FUNDING

## SAN BERNARDINO COUNTY FAIR - VICTORVILLE

(1) 2% PARI-MUTUEL COMMISSIONS (LOCATION FEES) PAID TO San Bernardino County Fair

(2) PROJECT FUNDING PAID THROUGH CARF TO San Bernardino County Fair

2000-2009

2000		2001		2002	
(1) 2% Commissions	285,671	(1) 2% Commissions	286,175	(1) 2% Commissions	302,002
(2) Project Funding	7,241	(2) Project Funding	153,691	(2) Project Funding	730
<b>TOTAL</b>	<b>292,912</b>	<b>TOTAL</b>	<b>439,866</b>	<b>TOTAL</b>	<b>302,732</b>

2003		2004		2005	
(1) 2% Commissions	322,558	(1) 2% Commissions	357,715	(1) 2% Commissions	384,889
(2) Project Funding	28,017	(2) Project Funding	11,544	(2) Project Funding	58,398
<b>TOTAL</b>	<b>350,575</b>	<b>TOTAL</b>	<b>369,259</b>	<b>TOTAL</b>	<b>443,286</b>

2006		2007		2008	
(1) 2% Commissions	394,560	(1) 2% Commissions	359,625	(1) 2% Commissions	287,764
(2) Project Funding	1,140	(2) Project Funding	27,298	(2) Project Funding	2,072
<b>TOTAL</b>	<b>395,700</b>	<b>TOTAL</b>	<b>386,923</b>	<b>TOTAL</b>	<b>289,837</b>

2009		2000-2009	
(1) 2% Commissions	253,191	(1) 2% Commissions	3,234,149
(2) Project Funding	40,009	(2) Project Funding	330,140
<b>TOTAL</b>	<b>293,200</b>	<b>TOTAL</b>	<b>3,564,290</b>

<b>\$3,235,000</b>	<b>Pari-Mutuel Commissions Paid to San Bernardino County Fair</b>
<b>\$331,000</b>	<b>Project Funding Paid through CARF to San Bernardino County Fair</b>



# California Authority of Racing Fairs

## Victorville Detailed Distribution Report for Ten Year Comparison

Handle	License Fee	CHRB Support Fee	F&E Fund	City Tax	Equine UC Davis	Workers Comp.	2% Comm. Loc. Fees	N/SCOTW inc. Expense	CMC Promotion	Vanning Stable	PFAB 509	Harness Loc. Fees	Track Comm.	Purses	Owners	Breeders Sires	To Out of State Tracks	Attendance
2000	14,341,574	255,321	0	9,591	47,136	14,343	0	285,671	59,747	65,371	0	0	732,990	725,800	8,191	73,245	101,819	79,001
2001	14,375,784	251,379	0	8,897	47,219	14,377	0	286,175	60,089	69,039	0	0	722,263	718,774	8,034	73,075	111,605	78,110
2002	13,814,760	245,922	0	8,247	45,301	13,816	0	274,553	57,417	86,084	0	0	688,917	683,190	7,867	70,473	111,216	80,319
2003	13,983,832	244,408	0	8,772	45,992	13,985	0	278,738	58,550	114,564	0	0	686,002	680,390	7,822	71,172	110,744	77,412
2004	15,072,281	263,540	0	8,896	49,464	15,073	20,090	299,781	62,302	127,077	4,930	0	732,901	727,821	8,426	76,082	136,584	77,126
2005	15,579,114	266,109	0	8,195	51,097	15,580	33,350	309,677	63,691	129,001	3,294	0	764,885	764,939	8,558	77,588	150,646	74,621
2006	15,564,691	256,842	0	7,999	51,075	15,566	34,086	309,547	65,228	128,687	0	0	773,369	773,873	8,543	84,364	149,288	75,032
2007	13,375,631	222,658	0	6,544	43,884	13,376	29,859	265,965	56,084	110,152	0	0	659,120	660,169	7,309	72,820	126,611	69,660
2008	10,293,531	170,879	0	5,075	33,819	10,294	23,934	204,964	43,204	83,004	0	0	511,997	513,613	5,635	55,387	95,946	60,666
2009	9,094,338	79,836	29,218	7,533	29,883	9,095	20,303	181,111	38,077	87,348	2,899	0	465,311	467,112	4,896	49,467	92,686	57,497
TOTAL	135,495,536	2,256,894	29,218	79,748	444,871	135,506	161,622	2,696,183	564,388	1,000,326	11,122	0	6,737,754	6,715,681	75,281	703,672	1,187,146	729,444

# California Authority of Racing Fairs

## San Bernardino County Fair Distribution of 2% Location Fees from Advance Deposit Wagering (ADW)

2% Location Fees (ADW)	2000	2001	2002	2003	2004	2005	2006	2007	2008	2009	TOTAL
	0	0	27,449	43,819	57,934	75,211	85,014	93,660	82,800	72,079	537,966

# California Authority of Racing Fairs

## Cumulative Funding Disbursements to San Bernardino County Fair (Victorville) SWF 2000-2009

	2000	2001	2002	2003	2004	2005	2006	2007	2008	2009	TOTALS
Infotext Funds	-	-	-	-	-	-	-	-	-	-	-
Equip. Replacement Fund	7,241	31,526	730	1,375	7,043	39,947	1,140	26,639	2,072	20,390	138,104
SWF upgrades	-	122,165	-	26,642	4,501	18,450	-	659	-	19,619	192,037
Total Funding	7,241	153,691	730	28,017	11,544	58,398	1,140	27,298	2,072	40,009	330,140



---

# APPENDIX

---

## CALIFORNIA FAIR SATELLITE NETWORK DISTRIBUTIONS FOR THOROUGHBRED RACING DURING DAYTIME HOURS







## *California Fairs' Satellite Network*



Artist Rendering of the Alameda County Fair Satellite Wagering Facility in Pleasanton, CA

- **Map of Satellite Network Locations**
- **Facility Descriptions**
- **Pari-Mutuel Handle and Distributions  
2007 - 2008 - 2009**




Presented by: Christopher Korby, Executive Director  
California Authority of Racing Fairs  
February 2010



# Fair Satellite Wagering Facilities



# California Fairs Satellite Network

Location	Fair/Regional Description	Table/ Carrel Seating	 Food Service					 Vehicle Parking	 Viewing Displays			
			Restaurant	Deli	Grill	Catering	Beverages & Full Bar		Television	Big Screen TV's	Jumbo Screen TV's	Carrel tabletop TV's
Anderson	Shasta District Fair	240		✓	✓	✓	✓	505	12	5		
Bakersfield	Kern County Fair	600		✓		✓	✓	Unlimited	26	12	2	
Del Mar	San Diego County Fair	3,500	✓	✓		✓	✓	12,000	425	40	4	
San Mateo	San Mateo County Fair	900		✓	✓	✓	✓	Unlimited	175	10	16	
Fresno	Big Fresno Fair	600		✓	✓	✓	✓	3,000	13	16	6	
Indio	Riverside County Fair	500		✓	✓	✓	✓	400	50	10		
Lancaster	Antelope Valley Fair	450		✓	✓	✓	✓	400	60		6	120
Monterey	Monterey California Fair	332		✓	✓	✓	✓	235	18	4		8
Perris	Southern California Fair	350		✓		✓	✓	250	65	6		54
Pleasanton	Alameda County Fair	800	✓	✓	✓	✓	✓	1,500	95		10	60
Pomona	Los Angeles County Fair	1,000	✓			✓	✓	45,000	65	8		147
Sacramento	Cal Expo & State Fair	950	✓	✓	✓	✓	✓	10,140	105		15	90
San Bernardino	National Orange Show	1,400	✓	✓		✓	✓	1,500	175		14	42
San Jose	Santa Clara County Fair	132		✓		✓	✓	475	20	10		
Santa Maria	Santa Barbara County Fair	250		✓	✓	✓	✓	565	42	14		
Santa Rosa	Sonoma County Fair	600	✓	✓	✓	✓	✓	1,000	90		8	20
Stockton	San Joaquin Fair	500		✓	✓	✓	✓	750	120	14	10	
Tulare	Tulare County Fair	300		✓	✓	✓	✓	1,000	14	6		
Turlock	Stanislaus County Fair	200		✓	✓	✓	✓	1,000	12	6	6	
Vallejo	Solano County Fair	250		✓	✓	✓	✓	250	40	16		
Ventura	Ventura County Fair	600		✓	✓	✓	✓	1,700	165		14	26
Victorville	San Bernardino County Fair	350		✓	✓	✓	✓	350	26	8		

# PARL-MUTUEL DISTRIBUTIONS REPORT FOR SATELLITE FACILITIES LOCATED AT CALIFORNIA FAIRS 2009

## CHRIMS Detailed Distribution Report

Date Range: 01/01/2009 - 12/31/2009  
Report By: Location

Race Type: All Races  
Location Types: Fairs

Hosts: All Hosts  
Breed: Thoroughbreds

Locations:  
On/Off:

All Locations  
Off Track

Tracks: All Tracks

Location	Handle	License	CHRB Support Fee	F&E	City & County Tax	N/SCOTWinc Exp. Fund	UC Davis Equine Research	Satellite Location	Van/Stable Fund	Work Comp.	CMC Promotion	PFAB509	Track Commission	Purses	Owners	Breeders/Sires	To Out of State Tracks	Total Distributions	Attendance
Anderson	2,099,707	0	4,166	1,808	6,838	75,236	2,100	41,441	24,774	3,533	8,295	0	101,095	100,557	1,446	10,946	29,568	411,802	7,584
Bakersfield	6,674,603	0	12,425	5,252	21,769	239,927	6,675	131,933	76,588	13,582	26,474	1,715	327,161	325,764	4,469	34,678	82,228	1,310,641	33,064
Eureka	1,442,242	0	1,460	1,038	4,707	51,247	1,442	28,524	17,112	2,058	5,705	0	63,523	63,565	998	7,490	22,353	271,223	2,724
Ferridale	172,728	0	398	381	570	10,364	173	3,455	2,071	387	691	0	6,903	6,783	121	844	1,460	34,601	
Fresno	6,638,013	0	11,884	5,420	21,623	235,595	6,638	131,049	76,546	12,629	26,284	1,271	318,506	316,780	34,503	34,503	95,895	1,299,090	28,267
Fresno Club One	2,929,022	0	6,318	2,692	9,685	105,171	2,929	58,088	33,799	5,874	11,636	971	144,555	143,939	1,972	15,295	39,103	581,927	5,723
Lake Perris	13,502,685	0	49,965	11,994	44,305	364,193	13,503	268,518	163,766	30,800	53,894	1,916	668,586	660,928	9,171	73,772	134,133	2,549,445	65,786
Lancaster	13,230,943	0	48,411	11,970	43,425	358,312	13,231	263,181	159,697	28,102	52,796	3,189	673,898	666,873	8,943	72,164	151,670	2,555,662	63,719
Monterey	6,455,496	0	11,825	4,146	21,056	226,746	6,456	127,611	74,015	11,304	25,569	2,453	323,494	321,802	4,319	33,980	102,167	1,296,541	27,486
Pleasanton	35,393,360	0	71,261	31,549	115,988	1,273,014	35,394	702,957	412,095	66,013	140,771	8,172	1,697,129	1,691,097	24,049	185,105	459,182	6,913,775	117,055
Pomona	47,180,771	0	195,825	39,275	155,012	1,210,381	47,181	939,467	573,077	105,411	188,168	11,601	2,426,358	2,399,074	32,092	259,598	489,973	9,072,494	165,023
Sacramento	24,479,836	0	46,900	21,043	79,984	885,604	24,480	484,752	280,263	46,032	97,776	684	1,093,812	1,090,318	16,355	127,825	339,679	4,635,509	97,970
San Bernardino	26,306,624	0	95,667	24,355	66,367	715,518	26,307	523,437	318,068	60,824	105,074	4,542	1,328,615	1,314,121	17,812	143,964	279,318	5,043,590	136,508
San Jose	30,113,338	0	149,569	67,578	98,849	1,105,664	30,114	599,082	347,779	59,062	119,970	11,521	1,487,915	1,482,022	20,292	157,056	400,947	6,006,538	125,769
San Mateo County	71,996,382	0	149,569	67,578	98,849	1,105,664	30,114	599,082	347,779	59,062	119,970	11,521	1,487,915	1,482,022	20,292	157,056	400,947	6,006,538	125,769
Santa Barbara	5,092,580	0	17,554	4,732	16,632	134,917	5,093	100,799	62,735	10,343	20,181	0	256,950	253,564	3,513	27,732	73,443	988,188	16,497
Santa Maria	5,251,315	0	19,522	4,757	17,185	137,163	5,252	104,151	64,996	10,887	20,830	105	263,924	260,340	3,640	28,737	61,943	1,003,431	15,045
Santa Rosa	10,420,797	0	20,312	9,096	33,915	362,121	10,421	205,542	120,371	19,756	41,145	2,676	499,183	498,096	7,025	54,251	142,701	2,026,611	54,299
Shallimar (Indio)	6,325,869	0	19,589	4,755	20,685	166,518	6,326	125,359	77,759	14,832	25,117	44	323,961	319,864	4,354	34,422	73,796	1,217,380	26,981
Stockton	16,398,362	0	34,707	16,435	53,752	596,577	16,399	325,769	189,797	32,687	65,282	4,639	800,814	798,022	11,075	85,675	211,377	3,243,007	75,479
Surfside Race Place	52,086,933	0	145,702	30,495	170,500	1,383,415	52,087	1,033,330	636,468	110,638	206,764	9,131	2,440,663	2,408,135	35,642	282,289	615,299	9,560,558	167,273
Tulare	3,317,738	0	6,673	3,065	10,838	119,669	3,318	65,684	39,232	5,372	13,143	108	151,680	150,885	2,289	17,337	45,549	634,844	13,927
Turlock	8,098,763	0	17,090	7,611	26,502	296,919	8,099	160,619	95,857	13,146	32,138	324	394,061	392,000	5,593	42,343	122,094	1,614,394	28,129
Vallejo	14,124,551	0	28,775	13,779	46,345	526,094	14,125	280,881	162,967	28,830	56,217	6,447	697,972	695,071	9,509	73,492	183,364	2,823,868	60,269
Ventura	24,844,298	0	95,667	21,542	81,551	661,038	24,845	494,248	303,847	51,243	99,022	3,359	1,267,564	1,252,365	17,016	136,106	305,150	4,814,563	77,759
Victorville	7,248,843	0	27,264	6,899	23,793	199,498	7,249	144,201	86,774	16,608	28,897	2,899	368,356	364,652	4,859	39,420	77,835	1,399,204	47,111
<b>(Total: 27 records)</b>	<b>441,825,799</b>	<b>0</b>	<b>1,198,698</b>	<b>378,165</b>	<b>1,448,319</b>	<b>14,094,184</b>	<b>441,837</b>	<b>8,777,686</b>	<b>5,241,546</b>	<b>897,276</b>	<b>1,758,641</b>	<b>98,766</b>	<b>21,634,439</b>	<b>21,472,301</b>	<b>300,097</b>	<b>2,354,655</b>	<b>5,467,125</b>	<b>85,563,734</b>	<b>1,667,073</b>

**\$14.1 Million**  
NCOTWinc. & SCOTWinc.  
Expense Fund

**\$21.6 Million**  
Track Commissions

**\$21.4 Million**  
to Purses

**\$2.4 Million**  
Breeders & Sires Programs

**\$85.6 Million**  
in Total Industry  
Distributions

In 2009, 1,667,073 patrons visited Fair Satellite Wagering Facilities and bet \$441.8 million, contributing \$85.6 million to the CA racing industry.

# PARI-MUTUEL DISTRIBUTIONS REPORT FOR SATELLITE FACILITIES LOCATED AT CALIFORNIA FAIRS 2008

## CHRIMS Detailed Distribution Report

Date Range: 01/01/2008 - 12/31/2008 Race Type: All Races Location Types: Fairs  
Report By: Location

Hosts: All Hosts Breed: Thoroughbreds

Locations: All Locations On/Off: Off Track

Tracks: All Tracks

Location	Handle	License	City & County Tax	N/SCOTWinc Exp. Fund	UC Davis Equine Research	Satellite Location	Van/Stable Fund	Work Comp	CMC Promotion	Track Commission	Purses	Owners	Breeders/Sires	To Out of State Tracks	Total Distributions	Attendance
Anderson	2,378,571	28,930	7,740	77,237	2,379	46,912	26,936	4,534	9,387	115,728	115,237	1,639	12,328	30,968	479,956	8,189
Bakersfield	7,279,476	87,555	23,771	243,636	7,280	144,066	80,477	14,998	29,025	357,264	356,099	4,894	37,756	84,119	1,470,940	32,761
Eureka	1,878,261	23,313	6,140	57,213	1,879	37,214	21,420	2,993	7,443	88,175	88,207	1,302	9,852	28,061	373,212	3,887
Ferndale	192,524	1,531	635	11,551	193	3,850	2,212	446	770	7,439	7,306	135	924	1,453	38,447	
Fresno	8,961,003	106,501	29,233	294,494	8,961	177,168	100,146	18,116	35,589	432,548	430,451	6,092	46,385	115,028	1,800,713	31,950
Fresno Club One	2,696,150	32,189	8,855	91,234	2,697	53,669	30,008	5,920	10,811	133,158	132,816	1,824	14,053	30,849	548,081	5,493
Lake Perris	17,566,696	357,452	57,671	473,013	17,567	349,520	176,784	41,970	70,256	852,053	841,849	11,987	93,751	153,945	3,497,818	75,215
Lancaster	14,965,410	301,072	49,123	404,961	14,966	297,714	149,945	32,765	59,903	734,253	725,909	10,168	79,821	153,033	3,013,634	75,343
Monterey	10,118,537	118,687	33,130	368,091	10,119	200,787	113,059	17,991	40,372	478,663	475,632	6,877	52,131	150,050	2,065,590	30,417
Pleasanton	40,025,036	488,559	131,280	1,288,378	40,025	495,636	449,601	82,211	159,845	1,970,419	1,968,418	27,345	209,536	456,075	8,065,328	129,350
Pomona	47,778,698	973,174	157,037	1,221,634	47,779	951,738	481,214	111,757	191,261	2,387,339	2,359,255	32,672	256,421	458,799	9,630,080	151,415
Sacramento	28,538,753	343,489	93,336	940,830	28,539	565,673	314,596	57,649	114,084	1,286,742	1,285,158	19,133	148,495	353,659	5,551,384	110,890
San Bernardino	32,262,038	647,499	105,956	875,246	32,262	642,160	323,886	75,860	129,185	1,585,213	1,567,057	21,948	172,140	314,837	6,493,248	142,907
San Jose	37,217,103	446,124	122,282	1,281,388	37,217	741,104	416,150	73,854	108,506	1,812,915	1,808,126	25,311	193,758	465,383	7,572,730	124,951
San Mateo	27,204,748	319,458	89,107	889,462	27,205	540,043	305,523	55,321	108,506	1,346,232	1,342,846	18,553	141,576	313,078	5,496,911	89,266
Santa Barbara	6,718,134	135,933	21,986	178,131	6,718	133,246	68,161	14,704	26,711	326,981	322,691	4,621	35,778	78,875	1,354,534	22,386
Santa Maria	6,079,864	124,038	19,930	161,927	6,080	120,790	61,843	12,564	24,212	290,456	286,561	4,190	32,426	63,195	1,208,213	20,342
Santa Rosa	12,454,092	151,965	40,645	397,094	12,454	246,334	139,133	25,449	49,496	607,660	606,926	8,462	64,882	150,399	2,500,898	63,165
Shalimar (Indio)	7,239,549	148,349	23,712	190,146	7,240	143,706	74,019	18,485	28,793	361,790	357,080	4,993	38,621	68,965	1,465,899	28,625
Stockton	20,194,698	246,032	66,240	660,474	20,195	401,456	225,927	41,174	80,733	991,421	990,075	13,742	105,531	239,948	4,082,948	85,941
Surfside Race Place	64,078,779	1,292,925	209,956	1,695,745	64,079	1,272,459	647,542	146,130	255,144	3,062,067	3,021,268	44,080	341,761	663,916	12,717,072	196,795
Tulare	3,614,488	44,078	11,805	119,916	3,615	71,542	40,956	6,262	14,327	168,186	167,407	2,491	18,768	46,653	716,004	17,562
Turlock	9,299,765	112,868	30,459	306,790	9,300	184,602	105,722	16,838	36,964	460,337	458,310	6,431	48,476	127,097	1,904,193	32,840
Vallejo	15,856,784	191,530	52,048	522,889	15,857	315,440	176,967	33,933	63,485	796,592	793,944	10,763	82,847	191,901	3,248,196	68,256
Ventura	29,437,699	589,470	96,660	785,231	29,438	585,817	298,355	65,056	117,560	1,459,766	1,441,547	20,226	157,263	320,619	5,967,007	84,903
Victorville	8,271,938	164,917	27,148	225,815	8,272	164,533	82,496	19,590	33,149	408,308	403,956	5,589	44,078	80,704	1,668,556	50,320
<b>(Total: 26 records)</b>	<b>462,308,792</b>	<b>7,477,639</b>	<b>1,515,887</b>	<b>13,760,527</b>	<b>462,318</b>	<b>9,187,179</b>	<b>4,913,077</b>	<b>996,569</b>	<b>1,846,129</b>	<b>22,521,705</b>	<b>22,354,130</b>	<b>315,467</b>	<b>2,439,358</b>	<b>5,141,607</b>	<b>92,931,590</b>	<b>1,685,407</b>

**\$13.7 Million**  
N/SCOTWinc. & SCOTWinc.  
Expense Fund

**\$22.5 Million**  
Track Commissions

**\$22.4 Million**  
to Purses

**\$2.4 Million**  
Breeders & Sires  
Programs

**\$92.9 Million**  
in Total Industry  
Distributions

In 2008, 1,685,407 patrons visited Fair Satellite Wagering Facilities and bet \$462.3 million, contributing \$92.9 million to the CA racing industry.



# PARI-MUTUEL DISTRIBUTIONS REPORT FOR SATELLITE FACILITIES LOCATED AT CALIFORNIA FAIRS 2007

## CHRIMS Detailed Distribution Report

Date Range: 01/01/2007 - 12/31/2007  
Report By: Location

Race Type: All Races  
Location Types: Fairs

Hosts: All Hosts  
Breed: Thoroughbreds

Locations: All Locations  
On/Off: Off Track

Tracks: All Tracks

Location	Handle	License	City & County Tax	N/SCOTWinc Exp. Fund	UC Davis Equine Research	Satellite Location	Van/Stable Fund	Work Comp	CMC Promotion	Track Commission	Purses	Owners	Breeders/Sires	To Out of State Tracks	Total Distributions	Attendance
Anderson	2,750,947	33,367	8,925	86,007	2,751	54,089	31,044	5,432	10,823	137,686	1,37,043	1,889	14,268	37,026	560,350	8,314
Bakersfield	8,115,501	96,943	26,490	262,463	8,116	160,545	90,102	17,478	32,301	404,587	4,03,115	5,485	42,222	91,909	1,641,756	35,953
Eureka	1,912,128	23,464	6,214	54,700	1,912	37,660	21,644	3,622	7,533	94,600	93,998	1,317	10,016	28,912	385,591	4,296
Ferndale	189,898	1,473	627	11,394	190	3,798	2,183	477	760	7,352	7,221	133	912	1,235	37,753	
Fresno	9,396,103	110,259	30,561	294,590	9,397	185,219	104,735	19,048	37,197	460,730	458,608	6,376	48,689	120,796	1,886,205	34,259
Fresno Club One	4,243,999	51,297	13,921	137,311	4,244	84,371	47,595	8,914	16,954	211,248	210,377	2,897	22,204	50,917	862,251	6,151
Lake Perris	20,259,128	411,188	66,260	544,813	20,260	401,577	208,504	46,521	80,724	971,238	989,537	13,769	107,691	193,628	4,025,711	84,566
Lancaster	17,813,777	368,938	58,332	477,872	17,814	353,530	183,353	39,132	71,085	865,841	855,653	12,108	94,837	186,874	3,575,369	84,322
Monterey	11,426,532	136,454	37,351	383,005	11,427	226,366	127,433	19,873	45,510	537,475	534,484	7,757	59,340	166,601	2,293,076	32,408
Pleasanton	45,986,883	555,862	150,344	1,441,641	45,987	1,171,174	514,856	93,935	183,023	2,264,569	2,261,695	31,339	240,483	533,480	9,228,390	140,711
Pomona	58,957,780	1,205,037	193,286	1,489,580	58,958	1,171,429	610,169	137,098	235,294	2,913,085	2,877,855	40,294	315,681	582,053	11,839,820	171,176
Sacramento	35,104,301	420,425	114,630	1,165,178	35,105	694,725	387,202	69,641	140,011	1,685,499	1,683,687	23,569	182,255	434,082	7,036,009	125,792
San Bernardino	36,067,703	725,335	118,105	973,246	36,069	715,790	370,843	84,051	143,963	1,757,708	1,737,264	24,490	191,918	361,742	7,240,524	157,624
San Jose	40,281,500	478,739	132,112	1,304,829	40,282	800,677	450,233	78,467	161,019	1,977,486	1,972,195	27,405	210,697	515,487	8,149,628	123,033
Santa Barbara	9,078,634	182,417	29,688	241,760	9,079	179,924	94,402	19,285	36,075	438,374	432,616	6,234	48,290	110,421	1,828,566	24,381
Santa Maria	6,896,280	140,752	22,511	182,327	6,897	136,432	71,483	14,176	27,364	326,697	322,390	4,721	36,635	74,716	1,367,099	22,826
Santa Rosa	14,772,858	178,976	48,077	443,228	14,774	291,375	164,411	31,350	58,547	734,518	733,633	10,008	77,175	179,845	2,965,917	65,460
Shalimar (Indio)	9,470,832	192,624	30,853	247,260	9,471	186,990	98,236	24,202	37,480	474,710	468,657	6,487	50,256	98,891	1,926,117	33,799
Surfside Race Place	21,543,607	280,535	70,500	673,007	21,544	427,275	240,130	45,271	85,938	1,080,241	1,078,732	14,617	112,818	252,538	4,363,144	92,298
Tulare	71,343,324	1,444,245	232,179	1,883,133	71,344	1,407,147	738,292	163,599	282,136	3,371,519	3,326,319	48,755	377,801	781,019	14,127,487	228,136
Tulare	4,268,785	51,459	13,924	138,295	4,269	84,389	48,262	7,828	16,900	200,523	199,608	2,938	22,189	55,848	846,392	19,995
Turlock	9,831,525	118,310	32,160	309,961	9,832	194,910	111,557	17,774	39,027	491,106	488,720	6,790	51,423	137,189	2,008,759	35,236
Vallejo	17,493,465	210,216	57,308	560,003	17,494	347,320	194,794	38,704	69,892	884,616	881,735	11,857	91,490	211,173	3,576,601	77,277
Ventura	33,830,173	675,438	110,571	903,719	33,831	670,130	350,353	77,645	134,480	1,672,093	1,651,252	23,137	179,803	374,069	6,856,521	94,842
Victorville	10,669,615	214,435	34,955	290,212	10,670	211,845	109,447	24,249	42,636	517,262	511,394	7,228	56,763	106,215	2,137,310	55,954
<b>(Total: 25 records)</b>	<b>501,705,256</b>	<b>8,278,187</b>	<b>1,639,885</b>	<b>14,509,495</b>	<b>501,719</b>	<b>9,938,685</b>	<b>5,371,264</b>	<b>1,087,771</b>	<b>1,996,675</b>	<b>24,480,763</b>	<b>24,287,787</b>	<b>341,599</b>	<b>2,645,855</b>	<b>5,686,664</b>	<b>100,766,348</b>	<b>1,758,937</b>

**\$14.5 Million**  
N/COTWinc. & SCOTWinc.  
Expense Fund

**\$24.5 Million**  
Track Commissions

**\$24.3 Million**  
to Purses

**\$2.6 Million**  
Breeders & Sires  
Programs

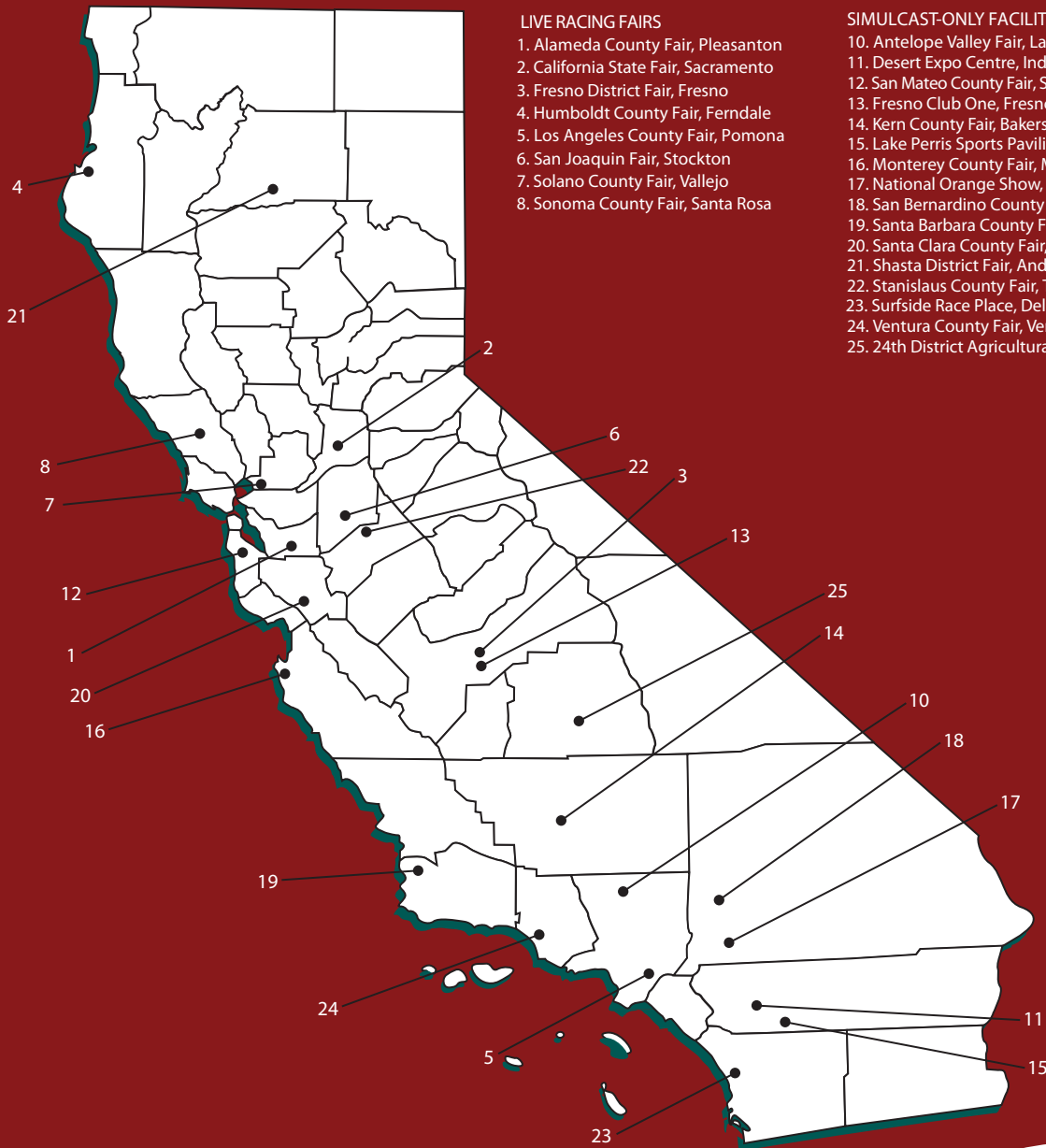
**\$100.8 Million**  
in Total Industry  
Distributions

In 2007, 1,758,937 patrons visited Fair Satellite Wagering Facilities and bet \$501.7 million, contributing \$100.8 million to the CA racing industry.





# Fair Satellite Wagering Facilities



## LIVE RACING FAIRS

1. Alameda County Fair, Pleasanton
2. California State Fair, Sacramento
3. Fresno District Fair, Fresno
4. Humboldt County Fair, Ferndale
5. Los Angeles County Fair, Pomona
6. San Joaquin Fair, Stockton
7. Solano County Fair, Vallejo
8. Sonoma County Fair, Santa Rosa

## SIMULCAST-ONLY FACILITIES

10. Antelope Valley Fair, Lancaster
11. Desert Expo Centre, Indio
12. San Mateo County Fair, San Mateo
13. Fresno Club One, Fresno
14. Kern County Fair, Bakersfield
15. Lake Perris Sports Pavilion, Perris
16. Monterey County Fair, Monterey
17. National Orange Show, San Bernardino
18. San Bernardino County Fair, Victorville
19. Santa Barbara County Fair, Santa Maria
20. Santa Clara County Fair, San Jose
21. Shasta District Fair, Anderson
22. Stanislaus County Fair, Turlock
23. Surfside Race Place, Del Mar
24. Ventura County Fair, Ventura
25. 24th District Agricultural Assn., Tulare

