



1776 Tribute Road, Suite 205
Sacramento, CA 95815
Office: 916.927.7223 Fax: 916.263.3341
www.calfairs.com

AGENDA
CALIFORNIA AUTHORITY OF RACING FAIRS
BOARD OF DIRECTORS MEETING
JOHN ALKIRE, CHAIR
12:30 P.M., TUESDAY, MARCH 3, 2015

Notice is hereby given that a meeting of the California Authority of Racing Fairs' Board of Directors will commence at 12:30p.m., Tuesday, March 3, 2015. The meeting will be held in Sacramento. 1776 Tribute Road, Conference Room, Sacramento, CA 95815.

AGENDA

- I. Date, time and location of next meeting: April 7, 2015
- II. Public Comment.
- III. Approval of minutes.
- IV. Report, discussion and action, if any, on CARF 2015 Legislative Program.
- V. Report on Statewide Totalisator Contract.
- VI. Report on developments at Fair Satellite Wagering Facilities.
- VII. Financials
- VIII. Executive Director's Report



1776 Tribute Road, Suite 205
Sacramento, CA 95815
Office: 916.927.7223 Fax: 916.263.3341
www.calfairs.com

NOTICE
CALIFORNIA AUTHORITY OF RACING FAIRS
BOARD OF DIRECTORS MEETING
JOHN ALKIRE, CHAIR
12:30 P.M., TUESDAY, MARCH 3, 2015

Notice is hereby given that a meeting of the California Authority of Racing Fairs' Board of Directors will commence at 12:30 p.m., Tuesday, March 3, 2015. The meeting will be held in Sacramento. 1776 Tribute Road, Conference Room, Sacramento, CA 95815

CARF Board of Directors Meeting
Toll Free Dial In Number: (800) 791-2345
Participant Code: 83711#
Via Teleconference

In order to ensure that all meeting participants are able to hear discussions during the teleconference, we ask that teleconference participants call from a **Landline Phone** and **Please Place Phone on MUTE While Not Speaking**. The Public and members of the California Authority of Racing Fairs Board of Directors may participate from the following locations:

Alameda County Fair
4501 Pleasanton Ave.
Pleasanton, CA 94566

California State Fair
1600 Exposition Blvd.
Sacramento, CA 95815

Stanislaus County
900 North Broadway
Turlock, CA 95380

Antelope Valley Fair
2551 West Ave. H, Suite 102
Lancaster, CA 93536

Monterey County Fair
2004 Fairground Road
Monterey, CA 93940

The Big Fresno Fair
1121 S. Chance Avenue
Fresno, CA 93702

San Mateo County Fair
2495 So. Delaware Street
San Mateo, CA 94403

CALIFORNIA AUTHORITY OF RACING FAIRS

Board of Directors

Tuesday, February 3, 2015

MINUTES

A teleconference meeting of the California Authority of Racing Fairs (CARF) Board of Directors was held at 12:30 P.M., Tuesday, February 3, 2015. The teleconference meeting was hosted at the CARF offices, 1776 Tribute Road, Sacramento, California.

CARF Board Directors attending: Jerome Hoban, Dan Jacobs, Rick Pickering and Kelly Violini. Joining by teleconference: Chris Borovansky.

Staff and Guests attending: Christopher Korby, Larry Swartzlander, Heather Haviland, Amelia White, Raechelle Gibbons, Louie Brown, Richard Conway, Brian May, Jeanne Wasserman, John Quiroz, Allen Aldrich and Richard Lewis.

Agenda Item 1 – Date, Time and Location of Next Meeting: March 3, 2015. The next CARF Board of Directors meeting will be held Tuesday, March 3, 2015 in Sacramento.

Agenda Item 2 – Public Comment. Vice Chairman Jacobs suggested that Mr. Korby chair the meeting in Mr. Alkire's absence. Mr. Korby welcomed Mr. Hoban to the CARF Board of Members as a newly elected member.

Agenda Item 3 – Approval of Minutes. Ms. Violini moved to approve the meeting minutes as presented. Mr. Jacobs seconded, unanimously approved.

Agenda Item 4 – Report, Discussion and Action, if any, on CARF 2015 Legislative Program. Mr. Brown reported that the Legislature returned in early January and the deadline to introduce new bills is February 27. Mr. Brown reported that potential racing legislation appears light and he expects to see industry principals introducing spot bills as placeholders.

Mr. Brown stated that a very active current topic at the Capitol is Internet poker. Two bills have been introduced, both in the Assembly; one additional bill is likely to be introduced in the Senate. Assemblymember Mike Gatto has introduced AB 9 and Assemblymember Reggie Jones-Sawyer has introduced AB 167. AB 167 is more inclusive and allows for the horse racing industry to obtain a license, in addition to card rooms and casinos. AB 9 only provides licensing opportunities to card rooms and tribal casinos. In 2014 the tribes could not reach a consensus regarding Internet poker and the same situation exists this year. Issues dividing the tribes are the "bad actor" language (i.e. Poker Stars), the amount of money gaming tribes would be

required to give to non-gaming tribes and the involvement of the horse racing industry. Even if the racing industry is allowed to participate, it remains to be seen how viable securing a license would be. AB 167 sets the price of a license at \$10 million. The bills are currently in a 30-day wait period.

Mr. Brown reported that the selection of committee chairs for the 2015-16 regular session have been announced. Assemblymember Adam Gray (D-Merced) is the new Chair of the Assembly Governmental Organization (G.O.) Committee and Senator Isadore Hall, III (D-South Bay) is the new Chair of the Senate Governmental Organization Committee. Assemblymember Gray has a great relationship with fairs and will be a strong ally regarding fair and racing issues. Senator Hall has vast experience in the Central Valley as the prior Assembly G.O. Committee Chair.

Mr. Brown reported that Governor Jerry Brown released his proposed 2015-2016 state budget, and it includes a \$10 million appropriation for fairs. The budget includes \$3 million to assist with fair operations, to improve the financial stability of smaller fairs statewide and provides funding to support additional fair board training. The remaining \$7 million is a one-time allocation for deferred maintenance at fairs.

Mr. Pickering stated that in 2014 Senator Hall ran a piece of legislation that was signed into law that precludes the possession or sale of Confederate flags on state property, including fairgrounds. Mr. Pickering requested that fair managers ensure fair vendors are aware of this new law.

Agenda Item 5 – Update on Award of Totalisator Contract. Mr. Korby reported the Totalisator contract was awarded to American Totalisator (Amtote) after a lengthy RFP process and careful consideration by a working group of industry principals. Amtote is owned by the Stronach Group, the same ownership group that operates Santa Anita and Golden Gate Fields in California. The SCOTWINC and NOTWINC Boards, which awarded the bid, will now negotiate the terms of the contract with Amtote representatives. Implementation of the changeover in machinery will be conducted in the late fall/winter of this year. CARF and Amtote staff will work closely with the live racing and satellite network to manage any structural modifications required well in advance of the implementation date.

Agenda Item 6 – Financials. Mr. Korby reported that financials are included in the meeting packet and that Ms. Gibbons is available to answer questions.

Mr. Pickering stated that in light of the new fair appropriation in the state budget, CARF, CFA and CDFA should revisit the topic of license fees paid to F&E from live racing fairs. Mr. Hoban agreed that those discussions should move forward, but requested that they be delayed until after the state budget is finalized.

Agenda Item 7 – Executive Director’s Report. Mr. Korby reported that Cal Expo planning to install a new inside safety rail and CARF staff is assisting in the preparation of the RFP. Cal Expo will be covering the cost of this installation.

Respectfully submitted,
Heather Haviland



ASSEMBLYMEMBER ADAM C. GRAY
21ST ASSEMBLY DISTRICT

For Immediate Release: February 25, 2015

Contact: Mike Lynch

Phone: (916) 319-2021

Assemblymember Gray and Senator Hall Announce Joint Proposal to Regulate iPoker in California

SACRAMENTO – Assemblymember Adam C. Gray (D-Merced), Chair of the Assembly Governmental Organization Committee, and Senator Isadore Hall (D-South Bay), Chair of the Senate Governmental Organization Committee, today announced the introduction of identical legislation to regulate intrastate Internet poker (iPoker) in California.

“This iPoker proposal must include a strong regulatory framework that protects Californians,” said Assemblymember Gray. “We need to crack down on illegal online gaming and replace it with a safe and responsible entertainment option for adults, which includes safeguards against compulsive and underage gambling, money laundering, fraud, and identity theft.”

AB 431 by Assemblymember Gray and SB 278 by Senator Hall would specifically authorize the operation of an iPoker website within California’s borders and would require the California Gambling Control Commission in consultation with the California Department of Justice to prepare regulations for the operation of an iPoker website.

“We intend to develop a framework in California that can be a national model,” said Senator Hall. “This will not be a rushed process. We look forward to moderating an open, honest, and thorough debate.”

Federal law essentially prohibits online gambling by U.S. citizens but includes specific provisions that allow individual states to offer intrastate Internet gaming, provided that state laws permitting and regulating that activity could impose reasonable protections against participation by underage persons or by persons located outside the boundaries of the states. Currently, only Nevada, Delaware, and New Jersey allow for regulated intrastate Internet gaming.

“Illegal online gambling happens every day in California on sites operated by unknown persons located in countries throughout the world. Neither state nor federal laws provide any consumer protections or safeguards,” said Assemblymember Gray.

“California needs a strong law that puts a stop to illegal online gambling,” finished Senator Hall.

#

Assemblymember Adam C. Gray represents the 21st Assembly District which includes all of Merced County and portions of Stanislaus County.

April 23, 2014

Authorizing Online Poker in California

LEGISLATIVE ANALYST'S OFFICE

Presented to:
Assembly Governmental Organization Committee
Hon. Isadore Hall III, Chair





Federal Law Allows States to Authorize Intrastate Online Gambling

- ☑ Under the Federal Unlawful Internet Gambling Enforcement Act (UIGEA) of 2006, it is generally unlawful now to place or receive gambling bets through the Internet.
- ☑ However, UIGEA allows states to authorize online, intrastate gambling under certain conditions. For example, the type of bet or wage must be authorized by state law and cannot violate certain federal laws. In addition, rules and regulations must be adopted to prevent minors and nonstate residents from participating in online gambling.
- ☑ In recent years, there have been various bills introduced in Congress to legalize online gambling across all states, which would likely impact the revenues that states could generate from intrastate, online gambling.
- ☑ Currently, Nevada, Delaware, and New Jersey have launched intrastate, online gambling.



Overview of Nevada Online Gaming

- ☒ **Types of Games Offered.** Nevada launched online poker in April 2013.
- ☒ **Regulatory Authority.** The Nevada Gaming Commission and the Nevada State Gaming Control Board share regulatory, licensing, enforcement, and adjudicatory authority over online gaming activities in the state.
- ☒ **Operator Licenses.** Statute restricts operator licenses to resort hotels that already possess certain gaming licenses that allow them to operate within the state. Operators must currently pay an initial two-year license fee of \$500,000 and a subsequent one-year renewal fee of \$250,000.
- ☒ **State Tax Revenues.** The state receives 3.5 percent, 4.5 percent, or 6.75 percent of total gross revenue received by a licensed operator, depending on the amount of gross revenue the operator generates monthly. Nevada anticipates annual revenue totaling around \$3 million.
- ☒ **Player Protections.** Operators are required to maintain a reserve backed by a federally insured financial institution and/or a bona fide insurance carrier, equal to the total amount of funds held across all player accounts. Additionally, operators are required to contract with an independent certified public accountant to review the maintenance of the reserve.
- ☒ **Problem Gaming Requirements.** Operators must provide links to a responsible gaming website and a website to allow individuals to "self-exclude" themselves from future play. Additionally, operators must ensure that players have the ability to set limits on losses, deposits, tournament entries, buy-ins, and play time through their gaming account.



Overview of Nevada Online Gaming

(Continued)



Number of Websites and Operators. Nevada currently has three websites operated by three licensed operators: Real Gaming operated by South Point Hotel and Casino, Ultimate Poker operated by a subsidiary of Station Casinos, and World Series of Poker operated by Caesars Entertainment Corporation.



Overview of Delaware Online Gaming

- ☒ **Types of Games Offered.** Delaware launched online gaming in November 2013. Authorized games include poker, blackjack, roulette, and slots.
- ☒ **Regulatory Authority.** The Delaware State Lottery Office has regulatory, licensing, enforcement, and adjudicatory authority over online gaming activities in the state.
- ☒ **Operator Licenses.** The State of Delaware does not license private entities to serve as online gaming operators in the same manner as Nevada and New Jersey. Instead, the state controls all gambling and licenses agents to serve on its behalf.
- ☒ **State Tax Revenues.** The state receives 43.5 percent of online slots revenue and 29.4 percent of revenue from all other games, excluding payments made to players. In addition, the state receives the first \$3.75 million of proceeds each fiscal year. The Delaware State Department of Finance initially estimated \$7.75 million in first-year revenues. However, the state now anticipates \$3.75 million in revenues.
- ☒ **Player Protections.** The State Lottery Office maintains a separate bank account to hold funds that are deposited into authorized gaming accounts.
- ☒ **Problem Gaming Requirements.** Individuals may submit a request to exclude themselves for one year, five years, or a lifetime. Violation of the exclusion constitutes a misdemeanor. Every licensed agent is also required to have a link to the self-exclusion page of the State Lottery website.
- ☒ **Number of Websites and Operators.** The state operates online gaming websites designed by 888 Holdings through its three racetrack casinos—Delaware Park, Dover Downs, and Harrington Raceway.



Overview of New Jersey Online Gaming

- ☒ **Types of Games Offered.** New Jersey launched online gaming in November 2013. Authorized games include poker, blackjack, roulette, and slots.
- ☒ **Regulatory Authority.** The New Jersey Office of the Attorney General's Division of Gaming Enforcement and the New Jersey Casino Control Commission share regulatory, licensing, enforcement, and adjudicatory authority over online gaming activities in the state.
- ☒ **Operator Licenses.** Statute restricts the issuance of operator licenses to casinos based in Atlantic City and requires that nearly all associated personnel and equipment be housed within the casinos. Operators must currently pay a license issuance fee of at least \$400,000 and a renewal fee of at least \$250,000. The amount paid depends on the actual cost of regulation. Licensed operators must also pay \$250,000 annually for problem gaming programs and services.
- ☒ **State Tax Revenues.** The state receives 15 percent of gross revenues from online gaming. Additionally, operators must either reinvest 2.5 percent of gross revenues for community and economic development projects or pay a tax consisting of 5 percent of gross revenues. New Jersey initially anticipated revenues of \$160 million to \$180 million annually. However, the state now anticipates annual revenues of \$35 million to \$50 million.
- ☒ **Player Protections.** Operators must maintain a New Jersey bank account—separate from all operating accounts—for funds deposited into gaming accounts. The amount in this account must be greater than or equal to the total amount that can be withdrawn from the operator's gaming accounts. Operators are also required to contract with an independent firm to conduct annual system and security assessments.



Overview of New Jersey Online Gaming

(Continued)



Problem Gaming Requirements. Individuals may exclude themselves for one year, five years, or a lifetime. Websites must include a prominent message directing problem gamblers to appropriate resources and operators must provide links to responsible gaming websites and a self-exclusion application. Additionally, operators must ensure that players have the ability to set limits on deposits, spending, and play time through their gaming account.



Number of Websites and Operators. New Jersey currently has around a dozen distinct websites operated by seven licensed operators.



How Much Revenue Could Actually Be Generated in California?



Our analysis indicates that the actual level of state revenue that could be generated from authorizing online poker in California would depend heavily on a variety of factors. These factors include:

- Possible legal issues regarding tribal-state compacts.
- How legal poker websites would be implemented in California.
- The number of people that would play online poker, as well as the amount wagered, on legal websites.
- The extent to which the legal websites are able to capture monies that are currently being wagered on illegal websites.



Possible Legal Issues Regarding Tribal-State Compacts

- ☑ The existing tribal-state compacts that have been ratified by the Legislature require the tribes to make payments to various state accounts. For example, some ratified compacts require tribes to make annual payments to the General Fund. (The Governor's proposed budget for 2014-15 estimates that the General Fund will receive approximately \$330 million in revenue from these tribes in the current year.)
- ☑ However, the Ninth Circuit Court of Appeal decided in the *Rincon Band v. Schwarzenegger* case that the state could not require tribes to make payments to the General Fund. While the compacts requiring these payments still stand, these tribes will likely no longer make such payments when they are renegotiated.
- ☑ Existing compacts also contain provisions limiting the state's ability to authorize certain types of gambling that could compete with the tribal casinos. For example, if the state authorizes certain types of competing gambling enterprises, these compacts may allow the tribes to stop making payments to state accounts, such as those that support nongaming tribes, regulatory bodies, problem gaming resources, and local mitigation.
- ☑ There could be legal challenges that legal poker websites violate the above provisions in tribal-state compacts if online poker is approved in California. If such challenges were upheld, the state could lose hundreds of millions of dollars in revenue annually. Thus, the Legislature should work closely with the Office of Legislative Counsel and other legal experts to assess these risks if it wishes to consider proposals in this area.



How Legal Poker Web Sites Could Be Implemented in California

- ☒ **State Share of “Gross Revenues.”** One of the primary factors in how much revenue the state would generate is what portion of gross revenues it would receive from the legal website operators. One goal could be to maximize the benefit from these activities to the state. On the other hand, if the state were to require too large a share, such operators may not retain sufficient funds to effectively compete with the operators of illegal websites (such as for marketing and incentives to retain players).
- ☒ **State Regulations.** The state would incur regulatory costs to prevent unauthorized users from playing on legal poker websites. In addition, it is not clear what specific steps individuals in California would need to take to be able to play on legal poker websites (such as providing proof of residency, location verification, and paying registration fees). If these requirements were extensive, however, they could be a barrier to player participation.
- ☒ **Number of Websites.** Although the existence of multiple legal poker websites within California could promote competition, having too many sites could result in each site not having sufficient players to facilitate poker games, as sometimes occurs on illegal websites. This seems to be an issue facing the three states currently operating online gaming.
- ☒ **Tax Revenue.** The website could be designed to make it easier to collect income taxes on net winnings. Currently, players using illegal websites have little incentive to report gambling winnings for tax purposes. The state could require that such websites report such information to the state. However, this could deter some players from using legal websites. The state would also collect taxes from the operators of legal poker websites as well as their employees.



Various Factors Could Impact Player Participation in Legal Online Poker

- ☑ **Cost to Play.** If the cost of playing on legal poker websites was greater than the cost of playing on illegal websites, due to taxes and fees paid by the players, there could be a fiscal disincentive to play and wager similar amounts on legal sites.
- ☑ **Security and Regulation.** Unlike illegal poker websites, the legal websites would be able to provide players with a greater sense of security and comfort in that they would know that they are not engaging in an illegal activity.
- ☑ **Incentives to Retain Players.** Many of the existing illegal websites offer financial incentives to retain players. For example, some sites offer bonuses to players that they can collect only after playing a predetermined amount of time. This could make it more difficult for new California online websites to capture a share of the market in the near term. The state could allow similar incentives for its games.
- ☑ **Games Offered.** Legal poker websites would have to compete with existing illegal websites that have little or no limits on the types of games offered.



Two Potential Sources of State Gaming Revenues From Online Poker



State Revenues From Redirecting Wagering From Illegal Websites

- Several studies estimate that illegal websites receive roughly \$300 million to \$400 million in gross revenue from Californians participating in online poker.
- While it is not known how many current California players would switch from illegal websites, these potential gambling activities could generate new revenues for the state.



State Revenues From Generating More Wagering

- Revenue generated from (1) existing players betting more than they otherwise would or (2) individuals that currently do not play online poker would be offset, to an unknown extent, by a reduction in existing state revenues.
- This is because individuals would generally spend less consuming other goods and services because more of their income would be spent on online gambling.

CA Authority of Racing Fairs Legislative Report - Last 10 Days 2/20/2015

IV.

[AB 315](#) (Bigelow R) District agricultural associations.

Current Text: Introduced: 2/12/2015 [pdf](#) [html](#)

Introduced: 2/12/2015

Status: 2/13/2015-From printer. May be heard in committee March 15.

Location: 2/12/2015-A. PRINT

Desk	Policy	Fiscal	Floor	Desk	Policy	Fiscal	Floor	Conf. Conc.	Enrolled	Vetoed	Chaptered
1st House				2nd House							

Summary: Existing law divides the state into agricultural districts, and provides for the management of each district by a district agricultural association. Existing law sets forth the powers and duties of a district agricultural association, including, among others, the power to contract in accordance with specified requirements. This bill would make nonsubstantive changes to the latter provisions.

Organization **Position**
CARF Watch

[SB 187](#) (Hall D) Horse racing: out-of-country thoroughbred races.

Current Text: Introduced: 2/9/2015 [pdf](#) [html](#)

Introduced: 2/9/2015

Status: 2/19/2015-Referred to Com. on G.O.

Location: 2/19/2015-S. G.O.

Desk	Policy	Fiscal	Floor	Desk	Policy	Fiscal	Floor	Conf. Conc.	Enrolled	Vetoed	Chaptered
1st House				2nd House							

Summary: The Horse Racing Law authorizes a thoroughbred racing association or fair to distribute the audiovisual signal and accept wagers on the results of out-of-state thoroughbred races conducted in the United States during the calendar period the association or fair is conducting a race meeting, including days on which there is no live racing being conducted by the association or fair, without the consent of the organization that represents horsemen and horsewomen participating in the race meeting and without regard to the amount of purses. Under that law, the total number of thoroughbred races imported by associations or fairs on a statewide basis under these provisions are required to not exceed 50 per day on days when live thoroughbred or fair racing is being conducted in the state, with the exception of prescribed races, including races imported that are part of the race card of the Kentucky Derby, the Kentucky Oaks, the Preakness Stakes, the Belmont Stakes, the Jockey Club Gold Cup, the Travers Stakes, the Arlington Million, the Breeders' Cup, the Dubai Cup, the Arkansas Derby, the Apple Blossom Handicap, or the Haskell Invitational. This bill would delete from the 50 imported race per day limitation, races imported that are part of the race card of the Dubai Cup. The bill would instead exempt from the 50 imported race per day limitation, races imported that are part of the race card of any out-of-country thoroughbred race approved by the California Horse Racing Board.

Organization **Position**
CARF Watch

[SB 221](#) (Jackson D) State public employees: sick leave: veterans with service-related disabilities.

Current Text: Introduced: 2/12/2015 [pdf](#) [html](#)

Introduced: 2/12/2015

Status: 2/13/2015-From printer. May be acted upon on or after March 15.

Location: 2/12/2015-S. PRINT

Desk	Policy	Fiscal	Floor	Desk	Policy	Fiscal	Floor	Conf. Conc.	Enrolled	Vetoed	Chaptered
1st House				2nd House							

Summary: Existing law prescribes the general work week policy for state employees, subject to specified exceptions, and the terms and conditions for accrual of vacation and sick leave. Existing law generally provides that a state officer or employee who is employed full time accrues one day of credit for sick leave for each calendar month of service. Existing law requires that if these provisions conflict with an adopted memorandum of understanding, the memorandum of understanding controls, as specified. This bill would grant a state officer or employee who is a military veteran with a service-connected disability rated at 30% or more by the United States Department of Veterans Affairs an additional credit for sick leave with pay of up to 96 hours for the purpose of undergoing medical treatment for his or her service-related disability. The bill would require that the sick leave be credited to a qualifying officer or employee on the first day of employment and remain available for use for the following 12 months of employment. The bill would prohibit this sick leave from being carried over after 12 months and would permit submission of satisfactory proof that the sick leave is being used for treatment of a service-connected disability to be required, as specified.

Organization **Position**
CARF Watch



Racing Surfaces
Testing Laboratory
Orono, Maine USA

The Durability of Sand Constituents in Dirt Racetrack Surface Materials

Julia Bradson, Eliza M. Cronkite, M.S., Christie A. Mahaffey, Ph.D.

Introduction

Amending and replacing racing surface material are necessary parts of track maintenance. Documentation of this process is often limited and material types differ between racetracks based on climate and local conditions. Therefore having improved data regarding the constituents of the surface material can help track superintendents better justify materials needed for track maintenance.

The mechanics of dirt racing surfaces are dependent on the moisture content and the composition of the material. Sand mixtures with smaller pores behave differently than sand mixtures with larger pores, retaining more moisture between grains. As a surface material changes due to wear, the moisture content necessary to maintain shear strength and compaction also changes. The sand becomes smaller and the fine material from the wear process can fill the pores. The change in the mechanical properties of the surface materials is critical to providing the required biomechanical properties for the horse.

The rate at which changes in the sand occur depends on mineral content and the shape of the sand grains. Sand with a high percentage of silica, typically in the form of quartz, is much more resistant to weathering and abrasion due to the level of hardness of quartz. More rounded sand will also tend to be more durable. With the frequent harrowing and heavy traffic on a racetrack, the changes to the sand grains from abrasion can occur quickly depending on the type of sand. The selection of more durable sand, if available, is usually the preferred method of avoiding these issues. However, if more durable sand is not available, frequent amendment of material and management of lost fine material is critical to the maintenance of a consistent racing surface.

Abrasion Resistance Testing

The selection of more durable and consistent sand can dramatically reduce changes to a track surface. Racing Surfaces Testing Laboratory (RSTL) has adopted and revised a sand durability test using a Micro-Deval apparatus, commonly used by the Department of Transportation. This abrasion resistance test allows for quantification of the durability of dirt track surface materials.

Abrasion resistance testing measures the abrasion resistance and durability of the sand used in a track surface. The quality of the sand is determined by the abrasion loss when a material is combined with water and an abrasive force. Track material undergoes mechanical abrasion using calibrated steel balls in the Micro-Deval apparatus. This allows for calculation of the percentage of material lost by comparing the weight of the sample before and after abrasion. Like the wear processes of the sand on the racetrack, the metal balls wear in the test apparatus and lose material in the same way that the harrow teeth and horse shoes wear. This

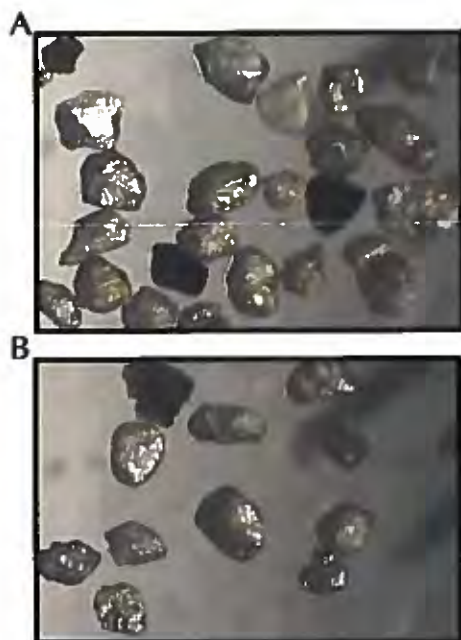


FIGURE 1: Sand with high percentage of quartz (~80%). A) Before abrasion resistance test and B) after.

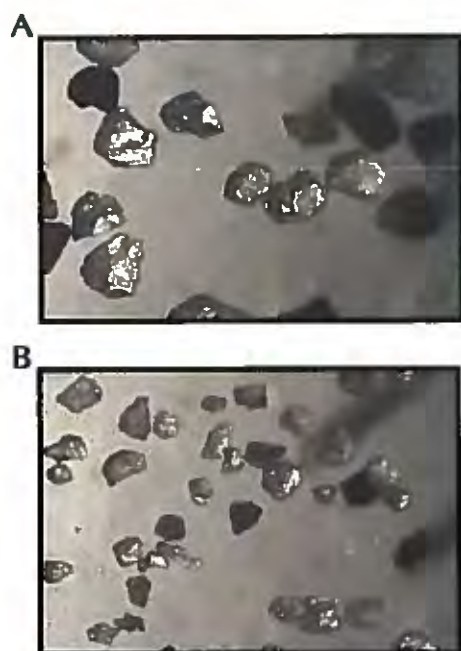
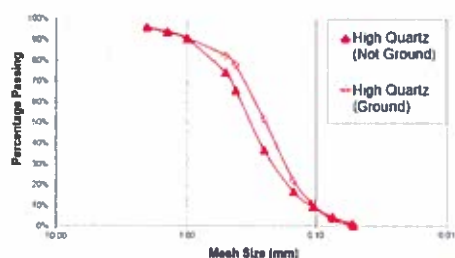


FIGURE 2: Sand with low percentage of quartz (~3%). A) Before abrasion resistance test and B) after.

A



B

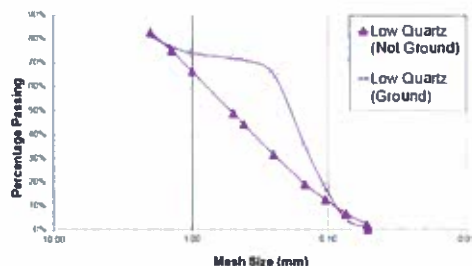


FIGURE 3: The amount of change in a track material as a result of abrasion resistance testing. A) Sediment with a high percentage of quartz (approximately 80%), and B) low percentage of quartz (approximately 3%).

wear is addressed by weighing the balls before and after each test.

These test results are useful when evaluating the hardness of a material like the sand on a track which is worn by abrasive processes such as harrowing and horse traffic. By measuring changes in the size and the type of material created from the wear, it is possible to determine if the material used on a track will require frequent amendments. Abrasion resistance testing also reveals some interesting information on the effects of abrasion when looking at mineral shape and grain size. In the scientific literature, it has been demonstrated for samples of the same mineralogy, flat or angular particles will have more material loss due to abrasion. Wear of the particles is due to chipping of corners.

Mineralogy

Test results indicate the mineralogy of a sample as a key component to the abrasion resistance of a track surface material. The mineralogy is determined using x-ray diffraction (XRD). Quartz is one of the hardest minerals in sand, and therefore resists abrasion. Sand with a high percentage of quartz is less likely to lose material due to abrasion than those with low percentages of quartz. The particle size distribution before and after abrasion testing for two track materials is shown in Figures 1 and 2. Figure 3 compares percentages of quartz and the amount of changes to the sediment sample as the result of testing. Sand with a higher percentage of quartz is clearly more durable and results in less generation of fine materials.

Conclusion

Dirt tracks with higher percentages of quartz and sub-rounded sand grains are more resistant to abrasion and therefore resist degradation of the track surface. Conversely, track surfaces with lower percentages of quartz or angular grains will require replacement of the surface material more frequently and may generate fine material that leads to compaction of the surface. XRD and abrasion resistance testing, in combination with sieve and hydrometer testing, provides highly valuable data as to how readily a track surface material degrades. Dirt tracks in North America have a wide range of quartz content (40-90%). Quantifying the durability of the sand used for the tracks can help determine the proper maintenance and required monitoring of the surface. The result can help to improve the consistency of the surface and provide trainers, riders and jockeys a fair and consistent surface for racing and training.

Acknowledgements

Support from the Los Angeles Turf Club Inc. for the development of the sand durability protocol and the purchase of durability test equipment is greatly appreciated.

This Racing Surfaces Testing Laboratory Technical Bulletin for Track Surface Education is one in a series of papers directed toward a general audience with a common interest in developing consistent and reliable track surfaces. This and subsequent bulletins can be found at the Racing Surfaces Testing Laboratory website: racingsurfaces.org/bulletins

The Racing Surfaces Testing Laboratory is a product of efforts by The Racing Surfaces Committee that was formed at the inaugural Welfare and Safety of the Racehorse Summit in 2006.

Racing Surfaces Testing Laboratory encourages the distribution and reprinting of these bulletins. For further information, contact:

Michael "Mick" Peterson, Ph.D., Executive Director, Racing Surfaces Testing Laboratory, 2 Summer Street #1, Orono, Maine 04473 PH: 207-866-1046
racingsurfaces.org mlpeterson23@gmail.com

Calendar for year 2015 (United States)

January						
Su	Mo	Tu	We	Th	Fr	Sa
				1	2	3
4	5	6	7	8	9	10
11	12	13	14	15	16	17
18	19	20	21	22	23	24
25	26	27	28	29	30	31

February						
Su	Mo	Tu	We	Th	Fr	Sa
1	2	3	4	5	6	7
8	9	10	11	12	13	14
15	16	17	18	19	20	21
22	23	24	25	26	27	28

March						
Su	Mo	Tu	We	Th	Fr	Sa
1	2	3	4	5	6	7
8	9	10	11	12	13	14
15	16	17	18	19	20	21
22	23	24	25	26	27	28
29	30	31				

April						
Su	Mo	Tu	We	Th	Fr	Sa
			1	2	3	4
5	6	7	8	9	10	11
12	13	14	15	16	17	18
19	20	21	22	23	24	25
26	27	28	29	30		

May						
Su	Mo	Tu	We	Th	Fr	Sa
					1	2
3	4	5	6	7	8	9
10	11	12	13	14	15	16
17	18	19	20	21	22	23
24	25	26	27	28	29	30
31						

June						
Su	Mo	Tu	We	Th	Fr	Sa
	1	2	3	4	5	6
7	8	9	10	11	12	13
14	15	16	17	18	19	20
21	22	23	24	25	26	27
28	29	30				

July						
Su	Mo	Tu	We	Th	Fr	Sa
			1	2	3	4
5	6	7	8	9	10	11
12	13	14	15	16	17	18
19	20	21	22	23	24	25
26	27	28	29	30	31	

August						
Su	Mo	Tu	We	Th	Fr	Sa
						1
2	3	4	5	6	7	8
9	10	11	12	13	14	15
16	17	18	19	20	21	22
23	24	25	26	27	28	29
30	31					

September						
Su	Mo	Tu	We	Th	Fr	Sa
		1	2	3	4	5
6	7	8	9	10	11	12
13	14	15	16	17	18	19
20	21	22	23	24	25	26
27	28	29	30			

October						
Su	Mo	Tu	We	Th	Fr	Sa
				1	2	3
4	5	6	7	8	9	10
11	12	13	14	15	16	17
18	19	20	21	22	23	24
25	26	27	28	29	30	31

November						
Su	Mo	Tu	We	Th	Fr	Sa
1	2	3	4	5	6	7
8	9	10	11	12	13	14
15	16	17	18	19	20	21
22	23	24	25	26	27	28
29	30					

December						
Su	Mo	Tu	We	Th	Fr	Sa
		1	2	3	4	5
6	7	8	9	10	11	12
13	14	15	16	17	18	19
20	21	22	23	24	25	26
27	28	29	30	31		

Calendar for year 2016 (United States)

January						
Su	Mo	Tu	We	Th	Fr	Sa
					1	2
3	4	5	6	7	8	9
10	11	12	13	14	15	16
17	18	19	20	21	22	23
24	25	26	27	28	29	30
31						

February						
Su	Mo	Tu	We	Th	Fr	Sa
	1	2	3	4	5	6
7	8	9	10	11	12	13
14	15	16	17	18	19	20
21	22	23	24	25	26	27
28	29					

March						
Su	Mo	Tu	We	Th	Fr	Sa
		1	2	3	4	5
6	7	8	9	10	11	12
13	14	15	16	17	18	19
20	21	22	23	24	25	26
27	28	29	30	31		

April						
Su	Mo	Tu	We	Th	Fr	Sa
					1	2
3	4	5	6	7	8	9
10	11	12	13	14	15	16
17	18	19	20	21	22	23
24	25	26	27	28	29	30

May						
Su	Mo	Tu	We	Th	Fr	Sa
1	2	3	4	5	6	7
8	9	10	11	12	13	14
15	16	17	18	19	20	21
22	23	24	25	26	27	28
29	30	31				

June						
Su	Mo	Tu	We	Th	Fr	Sa
			1	2	3	4
5	6	7	8	9	10	11
12	13	14	15	16	17	18
19	20	21	22	23	24	25
26	27	28	29	30		

July						
Su	Mo	Tu	We	Th	Fr	Sa
					1	2
3	4	5	6	7	8	9
10	11	12	13	14	15	16
17	18	19	20	21	22	23
24	25	26	27	28	29	30
31						

August						
Su	Mo	Tu	We	Th	Fr	Sa
	1	2	3	4	5	6
7	8	9	10	11	12	13
14	15	16	17	18	19	20
21	22	23	24	25	26	27
28	29	30	31			

September						
Su	Mo	Tu	We	Th	Fr	Sa
				1	2	3
4	5	6	7	8	9	10
11	12	13	14	15	16	17
18	19	20	21	22	23	24
25	26	27	28	29	30	

October						
Su	Mo	Tu	We	Th	Fr	Sa
						1
2	3	4	5	6	7	8
9	10	11	12	13	14	15
16	17	18	19	20	21	22
23	24	25	26	27	28	29
30	31					

November						
Su	Mo	Tu	We	Th	Fr	Sa
		1	2	3	4	5
6	7	8	9	10	11	12
13	14	15	16	17	18	19
20	21	22	23	24	25	26
27	28	29	30			

December						
Su	Mo	Tu	We	Th	Fr	Sa
				1	2	3
4	5	6	7	8	9	10
11	12	13	14	15	16	17
18	19	20	21	22	23	24
25	26	27	28	29	30	31

Calendar for year 2017 (United States)

January						
Su	Mo	Tu	We	Th	Fr	Sa
1	2	3	4	5	6	7
8	9	10	11	12	13	14
15	16	17	18	19	20	21
22	23	24	25	26	27	28
29	30	31				

February						
Su	Mo	Tu	We	Th	Fr	Sa
			1	2	3	4
5	6	7	8	9	10	11
12	13	14	15	16	17	18
19	20	21	22	23	24	25
26	27	28				

March						
Su	Mo	Tu	We	Th	Fr	Sa
			1	2	3	4
5	6	7	8	9	10	11
12	13	14	15	16	17	18
19	20	21	22	23	24	25
26	27	28	29	30	31	

April						
Su	Mo	Tu	We	Th	Fr	Sa
						1
2	3	4	5	6	7	8
9	10	11	12	13	14	15
16	17	18	19	20	21	22
23	24	25	26	27	28	29
30						

May						
Su	Mo	Tu	We	Th	Fr	Sa
	1	2	3	4	5	6
7	8	9	10	11	12	13
14	15	16	17	18	19	20
21	22	23	24	25	26	27
28	29	30	31			

June						
Su	Mo	Tu	We	Th	Fr	Sa
				1	2	3
4	5	6	7	8	9	10
11	12	13	14	15	16	17
18	19	20	21	22	23	24
25	26	27	28	29	30	

July						
Su	Mo	Tu	We	Th	Fr	Sa
						1
2	3	4	5	6	7	8
9	10	11	12	13	14	15
16	17	18	19	20	21	22
23	24	25	26	27	28	29
30	31					

August						
Su	Mo	Tu	We	Th	Fr	Sa
		1	2	3	4	5
6	7	8	9	10	11	12
13	14	15	16	17	18	19
20	21	22	23	24	25	26
27	28	29	30	31		

September						
Su	Mo	Tu	We	Th	Fr	Sa
					1	2
3	4	5	6	7	8	9
10	11	12	13	14	15	16
17	18	19	20	21	22	23
24	25	26	27	28	29	30

October						
Su	Mo	Tu	We	Th	Fr	Sa
1	2	3	4	5	6	7
8	9	10	11	12	13	14
15	16	17	18	19	20	21
22	23	24	25	26	27	28
29	30	31				

November						
Su	Mo	Tu	We	Th	Fr	Sa
			1	2	3	4
5	6	7	8	9	10	11
12	13	14	15	16	17	18
19	20	21	22	23	24	25
26	27	28	29	30		

December						
Su	Mo	Tu	We	Th	Fr	Sa
					1	2
3	4	5	6	7	8	9
10	11	12	13	14	15	16
17	18	19	20	21	22	23
24	25	26	27	28	29	30
31						



PREPARED BY:
CALIFORNIA AUTHORITY OF RACING FAIRS
CHRISTOPHER KORBY, EXECUTIVE DIRECTOR



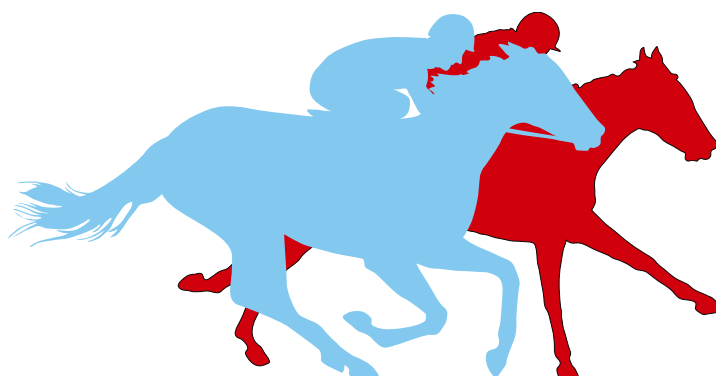
RECRUITMENT • RETENTION • RECOGNITION

*A program to recruit,
retain and recognize
horsemen on the
Northern California
racing circuit.*

RECRUITMENT REPORT

2014

CONTENTS



RECRUITMENT PROGRAM

- 01 Introduction**
Letter from the Executive Director.
- 02 2014 Strategy**
Outline of 2014 recruitment program tactics.
- 03 Budget**
2014 budget expense by category.
- 04 Recruitment Program Results**
- 05 Retention Program Results**
- 06 Recognition - VIP Program**
- 07 Advertising Samples**

PAYMASTER PAYMENT REPORTS

- 09 Purse Transaction Reports for Relocation Fees Paid**
Paymaster report that shows relocation costs by transaction. Each transaction includes the name of the account paid, amount paid and the horse associated with each transaction.
- 14 Trainer Starter Incentive**
Report that shows payments made to qualifying trainers as well as entry and start statistics for 2013 and 2014.

APPENDIX

- 17 Past Program Results**
Results overview for years 2009-2014.

PROGRAM EXECUTION

Christopher Korby - Executive Director
California Authority of Racing Fairs

Larry Swartzlander - COO
California Authority of Racing Fairs

Tom Doutrich - Racing Secretary
California Authority of Racing Fairs

Victoria Layne - Paymaster of Purses
California Authority of Racing Fairs

Heather Haviland - Director of Marketing
California Authority of Racing Fairs



INTRODUCTION

► In 2001, CARF developed a program to actively recruit out-of-state owners, trainers and horses to compete on the Northern California Summer Racing Circuit. The goal of the program was simple: increase the field size for summer racing in Northern California.

In order to accomplish this goal, CARF set three objectives for the initial program: 1) inform and educate horsemen in other jurisdictions about the benefits of racing in California, 2) retain horsemen who have elected to compete in Northern California in previous years, and 3) offer financial incentives to assist horsemen with the cost of shipping horses to Northern California.

The CARF recruitment program proved successful in bringing horsemen to California and increasing field size. From 2001 to 2014, the CARF recruitment program paid more than \$744,000 in shipping incentives to horses that made upwards of 4,185 starts.

The landscape of racing in California has changed dramatically since the recruitment program's inception in 2001. We're finding that retention and recognition of horsemen have become just as important as recruitment. Consequently, we're adjusting the incentives in our program so that the elements of **recruitment**, **retention** and **recognition** will each contribute to the program's primary objective: increase field size.

We're pleased to report that the changes to our program in 2013 and 2014 were met with positive response from horsemen. Once again this year, the program proved itself to be a successful component of our summer racing in Northern California.

In closing, we want to express our sincere thanks to all the owners and trainers who participated in our meets this last year and extend a cordial invitation to join us again in 2015.

CHRISTOPHER KORBY
EXECUTIVE DIRECTOR
CALIFORNIA AUTHORITY OF RACING FAIRS

OUR STRATEGY

The 2014 CARF Recruitment Program was expanded to include recruitment, starter incentives and a VIP Horsemen's program.

RECRUITMENT OUT-OF-STATE SHIPPING INCENTIVES

► Each spring since 2001, CARF has scheduled a series of out-of-state recruitment visits to personally meet one-on-one with horsemen in other jurisdictions and invite them to compete in Northern California for the summer.

To give extra meaning to our invitation and to financially assist horsemen who choose to ship to our circuit, CARF pays a \$300 Relocation Fee to the designated payee of any horse making its first start after shipping over 400 miles. A qualifying runner making its second start on the Fair Circuit will receive \$150.

RETENTION STARTER INCENTIVES & FIELD SIZE

► In an effort to retain Northern California trainers, maximize field size and offset the cost of shipping, CARF offered a \$1,000 incentive for trainers making 10 or more starts. Trainers making 5-9 starts received a \$500 bonus. This program realized a 15% increase in the number of entries made by qualifying trainers and a 22% increase in the number of starts.

RECOGNITION HORSEMEN VIP PROGRAM

► The CARF VIP Horsemen's Program provides horsemen with a single set of parking and admission credentials for the CARF Fair Circuit. The VIP Horsemen database is also used to distribute a packet of welcome information prior to the Fairs.

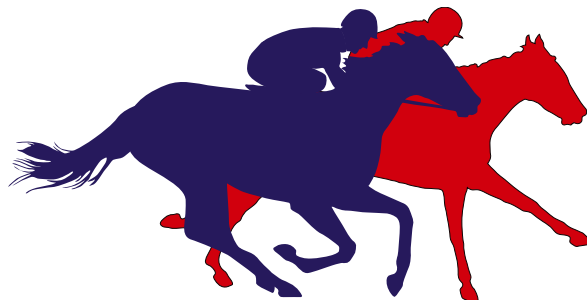
1

CARF paid \$40,800 in relocation fees to 121 Thoroughbred horses which made 253 starts on the 2014 Fair Circuit.



2

CARF paid \$114,000 in trainer incentives to trainers who made 1,339 starts on the CARF circuit.



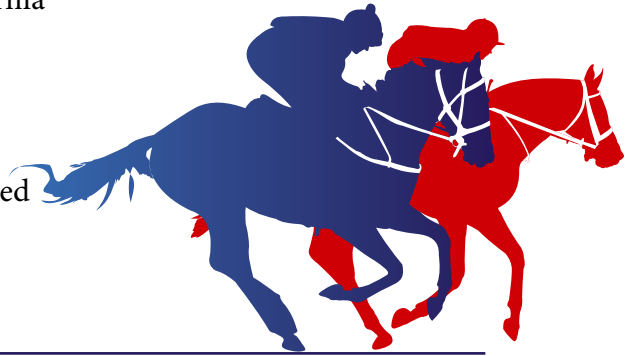
3

The CARF VIP Horsemen credentials simplify many of the logistical challenges horsemen face moving Fair to Fair.



PROGRAM BUDGET

► The CARF Recruitment Program is funded by allocations from member Fairs and from the California Marketing Committee (CMC). In 2013 and 2014, staff decided to forego the traditional out-of-state recruitment trips, receptions and dinners in favor of a direct mail piece to our database of out-of-state horsemen. Funds that normally would have been allocated for recruitment trips were instead redirected to develop new programs to increase field size.



EXPENSE TYPE	2014 COST
RECRUITMENT (400 or more miles)	
Recruitment - Travel & Receptions	1,562
Relocation Fees Paid (All Breeds)	58,650
Out-of-State Trainer Incentives	3,000
Advertising - Out-of-State Recruitment	10,465
RETENTION & FIELD SIZE	
Starter Incentive (Pleasanton)	36,500
Oak Tree Handcp. Incentive (Pleasanton)	7,000
Starter Incentive (Cal Expo)	22,000
Starter Incentive (Ferndale)	15,500
Starter Incentive (Stockton)	12,000
Starter Incentive (Fresno)	21,000
RECOGNITION - VIP PROGRAM	
Hard Costs	3,717
Giveaways	3,441
TOTAL 2013 RECRUITMENT PROGRAM	\$194,835

RECRUITMENT RESULTS

► The CARF Out-of-State Recruitment Program, administered by the California Authority of Racing Fairs staff, makes available \$300 to every horse that travels 400 miles or more to start on the Northern California Fair Circuit for its first start and \$150 for its second start (\$450 total). A runner making its first start at Ferndale receives \$150 for each of two starts, with another \$150 available if the horse starts again at Stockton and/or Fresno.

During recruiting efforts prior to our first meet, horsemen are notified of the program and invited to visit or call the paymaster when running an out-of-state horse. The paymaster maintains a ledger of eligible horses and verifies by past performances or Coggins test paperwork that the horse has traveled 400 miles or more to run on the Fairs. Payment is made by a transfer into the account of the owner or trainer of the horse.

121 OUT-OF-STATE
THOROUGHBREDS

RECEIVED \$40,800

in relocation fee payments at an average cost of \$161 per start.

OUT-OF-STATE
THOROUGHBREDS MADE

282 STARTS

on the 2014 Northern California Fair Circuit.

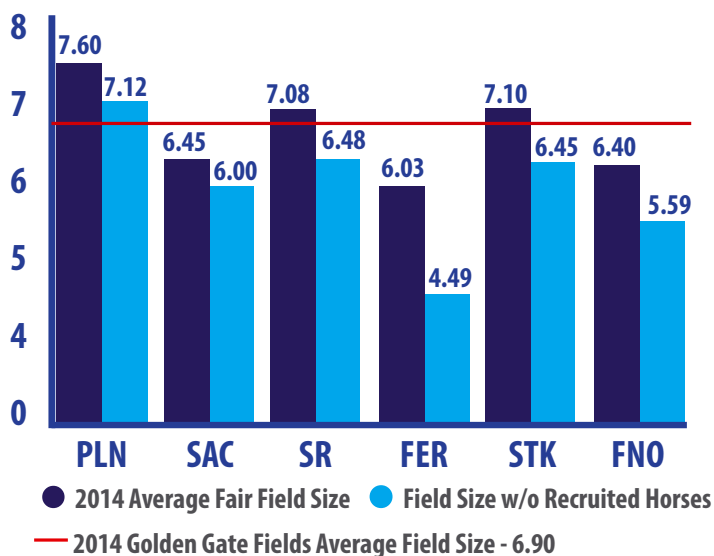
OUT-OF-STATE
THOROUGHBREDS MADE

UP 10 PERCENT

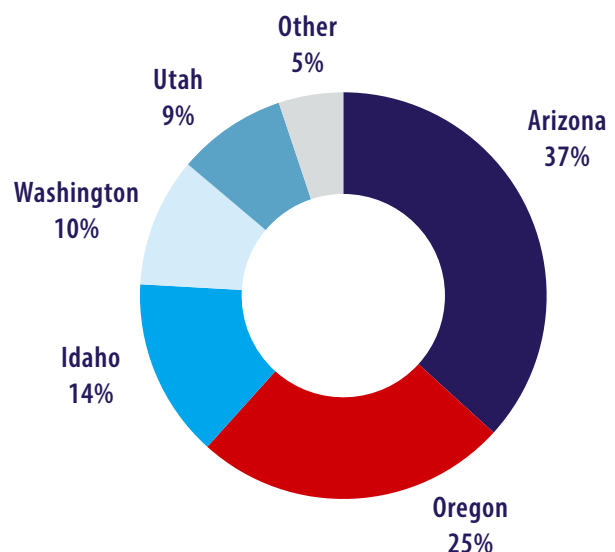
of the total 2014 Northern California Fair horse population by starts.

OUT-OF-STATE STARTS BY FAIR: Pleasanton - 45, Sacramento - 21, Santa Rosa - 57 Ferndale - 76, Stockton - 26, Fresno - 28

Impact of Recruited Horses on Field Size



Recruitment by State



RETENTION RESULTS

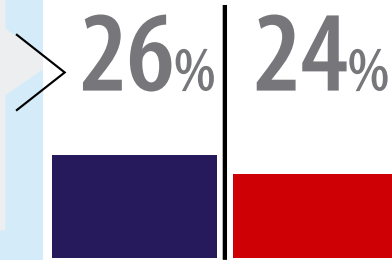


► In an effort to retain Northern California trainers, maximize field size and offset the cost of shipping, CARF offered a \$1,000 incentive for trainers making 10 or more starts at CARF member tracks. Trainers making 5-9 starts received a \$500 bonus. This program realized a 15% increase in the number of entries made by qualifying trainers and a 22% increase in the number of starts.



PLEASANTON - 56 TRAINERS QUALIFIED FOR THE STARTER INCENTIVE PROGRAM

Entries by these trainers were up 26% (690 in 2013 compared to 866 in 2014) and starts were up 24% (408 in 2013 compared to 505 in 2014).



14% | 14%

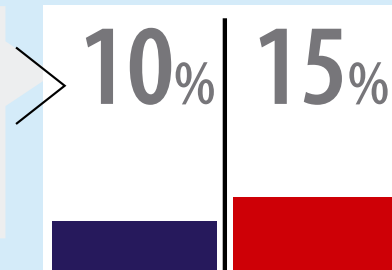


CAL EXPO - 24 TRAINERS QUALIFIED FOR THE STARTER INCENTIVE PROGRAM

With one day less racing, entries by these trainers were up 14% (276 in 2013 compared to 316 in 2014) and starts were up 14% (157 in 2013 compared to 179 in 2014).

FERNDALE - 21 TRAINERS QUALIFIED FOR THE STARTER INCENTIVE PROGRAM

Entries by these trainers were up 10% (315 in 2013 compared to 345 in 2014) and starts were up 15% (207 in 2013 compared to 239 in 2014).



11% | 34%

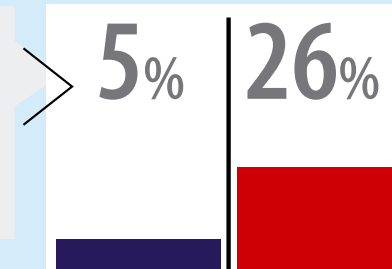


STOCKTON - 23 TRAINERS QUALIFIED FOR THE STARTER INCENTIVE PROGRAM

Entries by these trainers were up 11% (211 in 2013 compared to 234 in 2014) and starts were up 34% (108 in 2013 compared to 145 in 2014).

FRESNO - 31 TRAINERS QUALIFIED FOR THE STARTER INCENTIVE PROGRAM

Entries by these trainers were up 5% (415 in 2013 compared to 437 in 2014) and starts were up 26% (215 in 2013 compared to 271 in 2014).



RECOGNITION - VIP

The VIP Horsemen's Program provides horsemen with a single set of parking and admission credentials for the CARF Fair Circuit - allowing horsemen to move from fair to fair without having to secure a new parking pass every two weeks.

VIP credentials are distributed by the Racing Secretary in the Racing Office.



ADVERTISING

PLEASANTON

June 19-July 6 (12 Days)

SACRAMENTO

July 11-20 (7 Days)

FERNDALE

August 15-24 (6 Days)

STOCKTON

September 19-28 (6 Days)

FRESNO

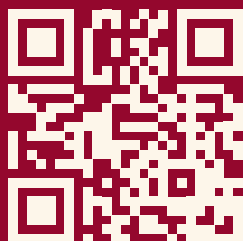
October 2-13 (9 Days)

Tom Doutrich
(Racing Secretary):
(415) 271-4613

Larry Swartzlander
(COO):
(916) 799-7084

Vicki Layne
(Paymaster):
(916) 715-8642

Toll-Free Entries:
(877) 722-3860
(877) 722-3071



STARTER BONUS

\$50 Starter Bonus for each Thoroughbred and Emerging Breed Start.

OUT-OF-STATE HORSES

\$300 1st start, \$150 2nd start
(\$150/\$150 Ferndale).

VIP PROGRAM

VIP Program provides one parking pass/credential for the CARF Fair Circuit, special access and other perks. Contact the Racing Secretary for details.

Thoroughbred Trainer INCENTIVES\$

Thoroughbred Trainers making 5-9 starts during Oak Tree at Pleasanton, Stockton, Ferndale (TB & EB) and Fresno will receive a \$500 Bonus at each meet where they reach the start requirement.

Trainers making 10 or more starts will receive a
\$1,000 BONUS.

2014 RACING FAIRS

BONUS UP TO
\$5,500

Thoroughbred Trainers making 5-9 starts at Cal Expo will receive an **\$800 Bonus.**

Trainers making 10 or more starts will receive a
\$1,500 BONUS.

Stakes Schedule

Date	Track	Race	Purse	Description
JUN 21	OTP	Oak Tree Handicap	\$100,000 Guaranteed	3YO & UP - 1 & 1/8 Miles
JUN 22	OTP	Pleasanton Oaks	\$50,000 Added*	F, 3YO - 6 Furlongs
JUN 28	OTP	Oak Tree Distaff	\$100,000 Guaranteed	F&M, 3 & UP Cal-Breds 6 Furlongs
JUL 4	OTP	Oak Tree Sprint	\$75,000 Guaranteed	3YO & UP - 6 Furlongs
JUL 5	OTP	Juan Gonzalez Memorial Overnight Stakes	\$50,000 Added*	F, 2YO - 5.5 Furlongs
JUL 6	OTP	Everett Nevin Stakes	\$50,000 Added*	2YO - 5.5 Furlongs
JUL 19	SAC	Governor's Handicap	\$75,000 Guaranteed	F&M, 3YO & UP - 1 & 1/16 Miles
AUG 24	FER	C.J. Hindley Humboldt County Marathon	\$20,000 Guaranteed	3YO & UP - 13 Furlongs
SEP 20	STK	Stockton Asparagus Stakes	\$50,000 Guaranteed	3YO - 6 Furlongs
OCT 5	FNO	Harris Farms Stakes	\$100,000 Guaranteed	3YO & UP (Cal Breds) - 6 Furlongs
OCT 11	FNO	The Harvest Stakes	\$50,000 Added**	F&M, 3YO & UP - 6 Furlongs
OCT 12	FNO	The Bulldog Handicap	\$75,000 Guaranteed	3YO & UP - 1 & 1/8 Miles

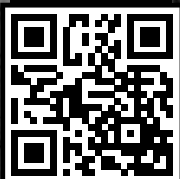
*plus up to \$15,000 to Cal Breds **includes \$15,000 to Cal Breds



www.CALFAIRS.com

SAMPLES

Condition books and stakes schedules available online.



Come Race!

RACE ON THE

Northern California Fair Circuit! ★★★★★

- Oak Tree at Pleasanton June 19-July 6
- California State Fair (Sacramento) July 11-20
- Humboldt County Fair (Ferndale) August 15-24
- San Joaquin County Fair (Stockton) September 19-28
- Big Fresno Fair (Fresno) October 2-13



www.CalFairs.com

Tom Doutrich, Racing Secretary (415) 271-4613

★★
Northern California Fair Circuit!



Come Race!

BONUS UP TO
\$5,500

Thoroughbred Trainer INCENTIVES

\$500 BONUS

- Oak Tree at Pleasanton • Stockton
- Ferndale (TB & EB) • Fresno

For trainers making 5-9 starts at each meet where they reach the start requirement.

\$1,000 for 10 or more starts

\$50 STARTER BONUS for each Thoroughbred and Emerging Breed Start

\$800 BONUS at Cal Expo for trainers making 5-9 starts at each meet where they reach the start requirement.

\$1,500 for 10 or more starts

OUT-OF-STATE HORSES

\$300 1st start, \$150 2nd start (\$150/\$150 Ferndale).



www.CalFairs.com

Tom Doutrich, Racing Secretary (415) 271-4613

NEW!

TRAINER INCENTIVES \$500 bonus at each fair for 5-9 starts and \$1,000 bonus at each fair for 10 or more starts.

Come Race!

Northern California FAIR CIRCUIT | 4 Stakes | 1 of them for \$100,000 | 1 of them for \$75,000 RACES

STOCKTON (Sept. 19-28)

- 9/27 Stockton Asparagus Stakes (3YO) 6 Furlongs - \$50,000

FRESNO (Oct. 2-13)

- 10/5 Harris Farms Stakes (3YO & up, Cal-Breds) 6 Furlongs - \$100,000 (Golden State Series)
- 10/11 The Harvest Stakes (F&M, 3YO & up) 6 Furlongs - \$50,000 (includes \$15,000 to Cal-breds)
- 10/12 The Bulldog Handicap (3YO & up) 1 & 1/8 Miles - \$75,000



www.CalFairs.com

Tom Doutrich, Racing Secretary (415) 271-4613

Transaction Type Report
For Types: RE
From 01/01/2014 To 01/27/2015

Jan 27, 2015 11:32 AM

CARF

Facilities: CARF

Page 1 of 5

Fac.	Date	From	Account Name	To	Account Name	Amount	Memo
Relocation Costs							
CRF	1/15/2014	C-30636	Relocation Costs	T-40028	Abel Borg	150.00	Hitdamark
CRF	1/15/2014	C-30636	Relocation Costs	T-39927	Stephen C. Fisher	150.00	I.B. Dreamin
CRF	1/15/2014	C-30636	Relocation Costs	T-37206	W. R. Whitehouse	150.00	Lady Roll On
CRF	1/15/2014	C-30636	Relocation Costs	T-37206	W. R. Whitehouse	300.00	Casual Encounter
CRF	1/15/2014	C-30636	Relocation Costs	O-39537	Gary C. Hughes	150.00	Atta Boy Lucky
CRF	6/21/2014	C-30636	Relocation Costs	T-38532	Margie Cantrell	300.00	Captain Gavel
CRF	6/21/2014	C-30636	Relocation Costs	T-38532	Margie Cantrell	300.00	Anasazi Maiden
CRF	6/22/2014	C-30636	Relocation Costs	T-29270	Rhonda B. Davis	300.00	Hub Cap
CRF	6/22/2014	C-30636	Relocation Costs	T-29270	Rhonda B. Davis	300.00	New Karma
CRF	6/22/2014	C-30636	Relocation Costs	T-29270	Rhonda B. Davis	300.00	Jackson Strutt
CRF	6/22/2014	C-30636	Relocation Costs	O-33401	Cindy Scharli or Susan Willis	300.00	Blowing Kissis
CRF	6/22/2014	C-30636	Relocation Costs	O-40339	Arleva N. Feddema and John R. Feddema	300.00	Blazing Wings
CRF	6/26/2014	C-30636	Relocation Costs	T-40195	Anthony DeMarco	300.00	Awfully Lucky
CRF	6/26/2014	C-30636	Relocation Costs	T-40195	Anthony DeMarco	300.00	Rondo Hondo
CRF	6/26/2014	C-30636	Relocation Costs	T-37191	Dan Morgan	300.00	Gray Elixir
CRF	6/26/2014	C-30636	Relocation Costs	T-37191	Dan Morgan	300.00	Perfect Indication
CRF	6/26/2014	C-30636	Relocation Costs	T-37191	Dan Morgan	300.00	Sassy Flirtini
CRF	6/27/2014	C-30636	Relocation Costs	T-40195	Anthony DeMarco	300.00	Chopin Red Sky
CRF	6/27/2014	C-30636	Relocation Costs	T-37191	Dan Morgan	300.00	Blaise of Light
CRF	6/28/2014	C-30636	Relocation Costs	O-40339	Arleva N. Feddema and John R. Feddema	150.00	Blazing Wings
CRF	6/28/2014	C-30636	Relocation Costs	T-40195	Anthony DeMarco	300.00	Latin Coffee
CRF	6/29/2014	C-30636	Relocation Costs	T-40195	Anthony DeMarco	300.00	Our Magic Couple
CRF	6/29/2014	C-30636	Relocation Costs	T-40195	Anthony DeMarco	300.00	Miss California
CRF	6/29/2014	C-30636	Relocation Costs	T-37191	Dan Morgan	300.00	Canducharlie
CRF	6/29/2014	C-30636	Relocation Costs	T-37191	Dan Morgan	300.00	Chase Man
CRF	7/9/2014	C-30636	Relocation Costs	T-38532	Margie Cantrell	150.00	Anasazi Maiden
CRF	7/10/2014	C-30636	Relocation Costs	O-40643	Salem Binmahfooz	300.00	TA Dance Withthe Star
CRF	7/10/2014	C-30636	Relocation Costs	O-28594	Mr. & Mrs. R. J. Bennett	300.00	Territorial
CRF	7/10/2014	C-30636	Relocation Costs	O-28594	Mr. & Mrs. R. J. Bennett	300.00	On The Sunnyside
CRF	7/10/2014	C-30636	Relocation Costs	O-28594	Mr. & Mrs. R. J. Bennett	300.00	Always a Sunrise
CRF	7/10/2014	C-30636	Relocation Costs	O-28594	Mr. & Mrs. R. J. Bennett	300.00	Amber Moon
CRF	7/10/2014	C-30636	Relocation Costs	O-28594	Mr. & Mrs. R. J. Bennett	300.00	Gryphon Gold
CRF	7/10/2014	C-30636	Relocation Costs	O-28594	Mr. & Mrs. R. J. Bennett	300.00	Finally Sunday
CRF	7/10/2014	C-30636	Relocation Costs	O-30086	John Qualtrough	300.00	CV Burning Desire
CRF	7/10/2014	C-30636	Relocation Costs	O-40642	Cre-Run Enterprises LLC	300.00	In X Hess
CRF	7/10/2014	C-30636	Relocation Costs	O-35449	Sam A Vasquez	300.00	Sammy V
CRF	7/10/2014	C-30636	Relocation Costs	O-35449	Sam A Vasquez	300.00	Lacy Vaz
CRF	7/10/2014	C-30636	Relocation Costs	O-35449	Sam A Vasquez	300.00	My Vaz is Hot
CRF	7/10/2014	C-30636	Relocation Costs	O-35449	Sam A Vasquez	300.00	Golly Braebrae
CRF	7/10/2014	C-30636	Relocation Costs	O-40643	Salem Binmahfooz	300.00	TA Line King
CRF	7/10/2014	C-30636	Relocation Costs	O-35449	Sam A Vasquez	300.00	Es Mi Cielo
CRF	7/10/2014	C-30636	Relocation Costs	T-40028	Abel Borg	450.00	My Nitro
CRF	7/10/2014	C-30636	Relocation Costs	T-40028	Abel Borg	450.00	Nivours Romance
CRF	7/10/2014	C-30636	Relocation Costs	T-40028	Abel Borg	300.00	My Hemi Magnum
CRF	7/10/2014	C-30636	Relocation Costs	T-40028	Abel Borg	300.00	Aimee Oaklee PW
CRF	7/10/2014	C-30636	Relocation Costs	T-40028	Abel Borg	300.00	WMA Destination
CRF	7/10/2014	C-30636	Relocation Costs	T-40028	Abel Borg	300.00	My Kaliber
CRF	7/10/2014	C-30636	Relocation Costs	T-29270	Rhonda B. Davis	300.00	Shockher Toppher
CRF	7/10/2014	C-30636	Relocation Costs	T-37191	Dan Morgan	150.00	Gray Elixir
CRF	7/12/2014	C-30636	Relocation Costs	O-29477	Jim Schleimer	300.00	TA Barn Dance
CRF	7/12/2014	C-30636	Relocation Costs	T-37191	Dan Morgan	150.00	Sassy Flirtini
CRF	7/12/2014	C-30636	Relocation Costs	T-37136	Molly J. Pearson	300.00	Myrna Lou
CRF	7/12/2014	C-30636	Relocation Costs	T-37136	Molly J. Pearson	300.00	Highway Boss
CRF	7/12/2014	C-30636	Relocation Costs	O-35449	Sam A Vasquez	300.00	By Golly Its Hot
CRF	7/12/2014	C-30636	Relocation Costs	T-40028	Abel Borg	150.00	Aimee Oakley PW
CRF	7/12/2014	C-30636	Relocation Costs	T-40028	Abel Borg	300.00	Scuddydos
CRF	7/12/2014	C-30636	Relocation Costs	O-39781	Mark Vasquez	300.00	Laurie Lu
CRF	7/12/2014	C-30636	Relocation Costs	O-10150	Allen J. Aldrich	300.00	Bag's of Fun

Transaction Type Report
For Types: RE
From 01/01/2014 To 01/27/2015

Jan 27, 2015 11:32 AM

CARF

Facilities: CARF

Page 2 of 5

Fac.	Date	From	Account Name	To	Account Name	Amount	Memo
CRF	7/12/2014	C-30636	Relocation Costs	T-40195	Anthony DeMarco	150.00	Awfully Lucky
CRF	7/12/2014	C-30636	Relocation Costs	T-38532	Margie Cantrell	300.00	Atlantra's Tantrum
CRF	7/13/2014	C-30636	Relocation Costs	T-38532	Margie Cantrell	150.00	Captain Gavel
CRF	7/16/2014	C-30636	Relocation Costs	O-10599	William B. Cox	450.00	Royal Marie
CRF	7/16/2014	C-30636	Relocation Costs	O-10599	William B. Cox	450.00	Vice Sized
CRF	7/16/2014	C-30636	Relocation Costs	O-10599	William B. Cox	450.00	Blazingly
CRF	7/16/2014	C-30636	Relocation Costs	O-10599	William B. Cox	300.00	Just Let Me Finish
CRF	7/18/2014	C-30636	Relocation Costs	T-40195	Anthony DeMarco	150.00	Rondo Hondo
CRF	7/19/2014	C-30636	Relocation Costs	T-38992	Ryan Kenney	300.00	Anita Sunset
CRF	7/19/2014	C-30636	Relocation Costs	T-38992	Ryan Kenney	300.00	Tenille
CRF	7/19/2014	C-30636	Relocation Costs	O-40645	Abdulghani A. Abdulghani	300.00	C Louise
CRF	7/19/2014	C-30636	Relocation Costs	T-40028	Abel Borg	150.00	WMA Destination
CRF	7/19/2014	C-30636	Relocation Costs	O-40643	Salem Binmahfooz	150.00	TA Line King
CRF	7/19/2014	C-30636	Relocation Costs	T-37191	Dan Morgan	150.00	Blaise of Light
CRF	7/19/2014	C-30636	Relocation Costs	O-40732	Barbara D Baer	300.00	Gonna Go Commando
CRF	7/19/2014	C-30636	Relocation Costs	T-40028	Abel Borg	150.00	My Kaliber
CRF	7/19/2014	C-30636	Relocation Costs	O-35449	Sam A Vasquez	150.00	My Vaz is Hot
CRF	7/19/2014	C-30636	Relocation Costs	O-35449	Sam A Vasquez	150.00	Sammy V
CRF	7/19/2014	C-30636	Relocation Costs	O-35449	Sam A Vasquez	150.00	By Golly its Hot
CRF	7/19/2014	C-30636	Relocation Costs	O-40643	Salem Binmahfooz	150.00	TA Dance Withthe Star
CRF	7/19/2014	C-30636	Relocation Costs	T-37191	Dan Morgan	150.00	Canducharlie
CRF	7/19/2014	C-30636	Relocation Costs	O-40642	Cre-Run Enterprises LLC	150.00	In X Hess
CRF	7/19/2014	C-30636	Relocation Costs	O-30072	Nancy Klapatch	300.00	Old Standard
CRF	7/20/2014	C-30636	Relocation Costs	O-29477	Jim Schleimer	450.00	Little Miss Fanci
CRF	7/20/2014	C-30636	Relocation Costs	O-29477	Jim Schleimer	450.00	MS Dennie MHF
CRF	7/20/2014	C-30636	Relocation Costs	O-29477	Jim Schleimer	450.00	Geraldine MHF
CRF	7/20/2014	C-30636	Relocation Costs	O-35449	Sam A Vasquez	150.00	Es Mi Cielo
CRF	7/20/2014	C-30636	Relocation Costs	O-30086	John Qualtrough	150.00	CV Burning Desire
CRF	7/20/2014	C-30636	Relocation Costs	T-40195	Anthony DeMarco	150.00	Latin Coffee
CRF	7/20/2014	C-30636	Relocation Costs	O-28594	Mr. & Mrs. R. J. Bennett	150.00	Gryphon Gold
CRF	7/20/2014	C-30636	Relocation Costs	O-28594	Mr. & Mrs. R. J. Bennett	150.00	Always a Sunrise
CRF	7/20/2014	C-30636	Relocation Costs	T-40195	Anthony DeMarco	150.00	Miss California
CRF	7/26/2014	C-30636	Relocation Costs	O-29477	Jim Schleimer	150.00	TA Barn Dance
CRF	7/26/2014	C-30636	Relocation Costs	O-40755	Dan McCanna	300.00	Sunshine in Rio
CRF	7/26/2014	C-30636	Relocation Costs	O-31326	Margie Cantrell	300.00	Demetrius
CRF	7/28/2014	C-30636	Relocation Costs	O-28594	Mr. & Mrs. R. J. Bennett	150.00	Amber Moon
CRF	7/28/2014	C-30636	Relocation Costs	T-40028	Abel Borg	150.00	Scuddydos
CRF	7/28/2014	C-30636	Relocation Costs	O-39781	Mark Vasquez	150.00	Laurie Lu
CRF	8/6/2014	C-30636	Relocation Costs	T-35198	Quinn Howey	300.00	Tiz True Love
CRF	8/6/2014	C-30636	Relocation Costs	O-28594	Mr. & Mrs. R. J. Bennett	450.00	Flight Commander
CRF	8/6/2014	C-30636	Relocation Costs	T-39012	Paul A. Treasure	300.00	Paris in April
CRF	8/6/2014	C-30636	Relocation Costs	T-29270	Rhonda B. Davis	150.00	Hub Cap
CRF	8/6/2014	C-30636	Relocation Costs	T-29270	Rhonda B. Davis	150.00	Jackson Strutt
CRF	8/6/2014	C-30636	Relocation Costs	T-29270	Rhonda B. Davis	150.00	New Karma
CRF	8/6/2014	C-30636	Relocation Costs	T-37206	W. R. Whitehouse	300.00	Shezamover
CRF	8/6/2014	C-30636	Relocation Costs	T-37206	W. R. Whitehouse	300.00	Shanghai Voyage
CRF	8/6/2014	C-30636	Relocation Costs	O-40645	Abdulghani A. Abdulghani	150.00	C Louise
CRF	8/6/2014	C-30636	Relocation Costs	O-10150	Allen J. Aldrich	450.00	Down Town Clyde
CRF	8/6/2014	C-30636	Relocation Costs	T-39012	Paul A. Treasure	300.00	Love My Way
CRF	8/6/2014	C-30636	Relocation Costs	T-40028	Abel Borg	300.00	Whadda QT
CRF	8/6/2014	C-30636	Relocation Costs	O-30072	Nancy Klapatch	150.00	Old Standard
CRF	8/8/2014	C-30636	Relocation Costs	T-39012	Paul A. Treasure	150.00	Paris in April
CRF	8/8/2014	C-30636	Relocation Costs	O-40732	Barbara D Baer	150.00	Gonna Go Commando
CRF	8/8/2014	C-30636	Relocation Costs	T-37206	W. R. Whitehouse	300.00	Great Selection
CRF	8/8/2014	C-30636	Relocation Costs	T-37206	W. R. Whitehouse	300.00	A P Phantom
CRF	8/8/2014	C-30636	Relocation Costs	T-38532	Margie Cantrell	150.00	Demetrius
CRF	8/8/2014	C-30636	Relocation Costs	O-28594	Mr. & Mrs. R. J. Bennett	300.00	Catzanova
CRF	8/9/2014	C-30636	Relocation Costs	T-38532	Margie Cantrell	150.00	Atlantra's Tantrum
CRF	8/10/2014	C-30636	Relocation Costs	O-10599	William B. Cox	300.00	Perfect Flight
CRF	8/10/2014	C-30636	Relocation Costs	T-37206	W. R. Whitehouse	300.00	Buck's Tornado
CRF	8/10/2014	C-30636	Relocation Costs	T-37206	W. R. Whitehouse	300.00	Dugan Bill
CRF	8/10/2014	C-30636	Relocation Costs	O-40641	Renee Mary LaFleur	450.00	Slam Bradford

Transaction Type Report
For Types: RE
From 01/01/2014 To 01/27/2015

Jan 27, 2015 11:32 AM

CARF

Facilities: CARF

Page 3 of 5

Fac.	Date	From	Account Name	To	Account Name	Amount	Memo
CRF	8/10/2014	C-30636	Relocation Costs	O-39464	MNM Thoroughbreds LLC	300.00	Seductive Charm
CRF	8/10/2014	C-30636	Relocation Costs	T-37401	Frank Lucarelli	300.00	Michael The Man
CRF	8/10/2014	C-30636	Relocation Costs	T-37401	Frank Lucarelli	300.00	Special Holiday
CRF	8/10/2014	C-30636	Relocation Costs	T-37401	Frank Lucarelli	300.00	Wedding Kake
CRF	8/10/2014	C-30636	Relocation Costs	T-37401	Frank Lucarelli	300.00	Kenai King
CRF	8/10/2014	C-30636	Relocation Costs	O-35449	Sam A Vasquez	150.00	Golly Braebrae
CRF	8/10/2014	C-30636	Relocation Costs	T-39012	Paul A. Treasure	150.00	Love My Way
CRF	8/15/2014	C-30636	Relocation Costs	T-35198	Quinn Howey	150.00	Tiz True Love
CRF	8/15/2014	C-30636	Relocation Costs	T-38156	Leonard A. Espinoza	150.00	Alley Hondro
CRF	8/15/2014	C-30636	Relocation Costs	O-30072	Nancy Klapatch	150.00	Focus Now
CRF	8/16/2014	C-30636	Relocation Costs	T-38156	Leonard A. Espinoza	150.00	Magical Saturday
CRF	8/16/2014	C-30636	Relocation Costs	T-39694	Kenneth E. McReynolds	150.00	Jennifer Doll
CRF	8/16/2014	C-30636	Relocation Costs	O-40871	Manuel & Patricia Rodriguez	150.00	Chele
CRF	8/16/2014	C-30636	Relocation Costs	O-31075	Earl D. Miller	150.00	Northern Smoke
CRF	8/16/2014	C-30636	Relocation Costs	O-34768	Jaqueline Smith	150.00	Up Your Plan
CRF	8/16/2014	C-30636	Relocation Costs	T-37206	W. R. Whitehouse	150.00	Dugan Bill
CRF	8/16/2014	C-30636	Relocation Costs	O-34768	Jaqueline Smith	150.00	Tiz I Is
CRF	8/16/2014	C-30636	Relocation Costs	O-34768	Jaqueline Smith	150.00	At the Bada Bing
CRF	8/16/2014	C-30636	Relocation Costs	O-34768	Jaqueline Smith	150.00	General Day
CRF	8/16/2014	C-30636	Relocation Costs	T-39694	Kenneth E. McReynolds	150.00	Wylie N Wyatt
CRF	8/16/2014	C-30636	Relocation Costs	T-39694	Kenneth E. McReynolds	150.00	Captain Camelot
CRF	8/16/2014	C-30636	Relocation Costs	T-39694	Kenneth E. McReynolds	150.00	Matt's Sonic
CRF	8/16/2014	C-30636	Relocation Costs	T-38070	Humberto P. Loma	450.00	Special Kind of Lady
CRF	8/17/2014	C-30636	Relocation Costs	T-39694	Kenneth E. McReynolds	150.00	Xcuse Me Monto
CRF	8/17/2014	C-30636	Relocation Costs	O-40887	Nancy C. Finney	150.00	Turkish Fox
CRF	8/17/2014	C-30636	Relocation Costs	O-34275	Janice M Moody	150.00	Cowboy Jack G
CRF	8/17/2014	C-30636	Relocation Costs	T-38532	Margie Cantrell	150.00	Keepherrockin
CRF	8/17/2014	C-30636	Relocation Costs	T-37206	W. R. Whitehouse	150.00	New Haven Line
CRF	8/17/2014	C-30636	Relocation Costs	T-38156	Leonard A. Espinoza	150.00	Jasper
CRF	8/17/2014	C-30636	Relocation Costs	T-38156	Leonard A. Espinoza	150.00	Skrillex
CRF	8/17/2014	C-30636	Relocation Costs	T-39618	William B Cox	150.00	Perfect Flight
CRF	8/19/2014	C-30636	Relocation Costs	T-40859	James R. Craig	150.00	Storm On the River
CRF	8/19/2014	C-30636	Relocation Costs	O-40856	Bern B. Kent	150.00	Yo Syd
CRF	8/19/2014	C-30636	Relocation Costs	T-40859	James R. Craig	150.00	Truffle's Crown
CRF	8/19/2014	C-30636	Relocation Costs	T-40859	James R. Craig	150.00	Tucannon
CRF	8/19/2014	C-30636	Relocation Costs	O-40874	Lincoln J. Suppah	150.00	Dillon's Dynamite
CRF	8/19/2014	C-30636	Relocation Costs	O-40874	Lincoln J. Suppah	150.00	I'lbeamoneysuncle
CRF	8/19/2014	C-30636	Relocation Costs	O-40874	Lincoln J. Suppah	150.00	He'll Rockyou
CRF	8/19/2014	C-30636	Relocation Costs	O-32974	Emilio Guerrero	150.00	Brother Ernie
CRF	8/19/2014	C-30636	Relocation Costs	O-32974	Emilio Guerrero	150.00	Atticus Scouts
CRF	8/19/2014	C-30636	Relocation Costs	O-39101	Mary M Boyle	150.00	Mary Jeanene
CRF	8/22/2014	C-30636	Relocation Costs	T-40028	Abel Borg	150.00	RB Creed
CRF	8/22/2014	C-30636	Relocation Costs	T-39694	Kenneth E. McReynolds	150.00	Xcuse Me Monto
CRF	8/22/2014	C-30636	Relocation Costs	T-39694	Kenneth E. McReynolds	150.00	Carlsbad Lagoon
CRF	8/22/2014	C-30636	Relocation Costs	T-37206	W. R. Whitehouse	150.00	New Haven Line
CRF	8/22/2014	C-30636	Relocation Costs	O-30072	Nancy Klapatch	150.00	Focus Now
CRF	8/22/2014	C-30636	Relocation Costs	O-40874	Lincoln J. Suppah	150.00	Ziggy Zack
CRF	8/22/2014	C-30636	Relocation Costs	T-40859	James R. Craig	150.00	Guzzlingin
CRF	8/22/2014	C-30636	Relocation Costs	O-40894	Patricia Rodriguez	150.00	Chele
CRF	8/23/2014	C-30636	Relocation Costs	T-37206	W. R. Whitehouse	150.00	Great Selection
CRF	8/23/2014	C-30636	Relocation Costs	O-40874	Lincoln J. Suppah	150.00	I'lbeamoneysuncle
CRF	8/23/2014	C-30636	Relocation Costs	T-38532	Margie Cantrell	150.00	Keepherrockin
CRF	8/23/2014	C-30636	Relocation Costs	T-40147	Ken Nolan	150.00	B B's Quick Action
CRF	8/23/2014	C-30636	Relocation Costs	O-31075	Earl D. Miller	150.00	Northern Smoke
CRF	8/24/2014	C-30636	Relocation Costs	T-40859	James R. Craig	150.00	Truffles Crown
CRF	8/24/2014	C-30636	Relocation Costs	O-40856	Bern B. Kent	150.00	Yo Syd
CRF	8/24/2014	C-30636	Relocation Costs	O-39101	Mary M Boyle	150.00	Chocolate Starr
CRF	8/24/2014	C-30636	Relocation Costs	O-39101	Mary M Boyle	150.00	Mary Jeanene
CRF	8/24/2014	C-30636	Relocation Costs	T-39694	Kenneth E. McReynolds	150.00	Jennifer Doll
CRF	8/24/2014	C-30636	Relocation Costs	T-40859	James R. Craig	150.00	Storm On the River
CRF	8/24/2014	C-30636	Relocation Costs	O-40874	Lincoln J. Suppah	150.00	Dillon's Dynamite
CRF	8/24/2014	C-30636	Relocation Costs	T-39694	Kenneth E. McReynolds	150.00	Matt's Sonic

Transaction Type Report
For Types: RE
From 01/01/2014 To 01/27/2015

Jan 27, 2015 11:32 AM

CARF **Facilities: CARF** **Page 4 of 5**

Fac.	Date	From	Account Name	To	Account Name	Amount	Memo
CRF	8/24/2014	C-30636	Relocation Costs	T-40859	James R. Craig	150.00	Dee Rain
CRF	8/24/2014	C-30636	Relocation Costs	O-40874	Lincoln J. Suppah	150.00	Shakalaka
CRF	8/24/2014	C-30636	Relocation Costs	O-40856	Bern B. Kent	150.00	Singularity
CRF	8/24/2014	C-30636	Relocation Costs	T-37206	W. R. Whitehouse	150.00	Little Linda
CRF	8/24/2014	C-30636	Relocation Costs	O-32974	Emilio Guerrero	150.00	Atticus Scouts
CRF	8/24/2014	C-30636	Relocation Costs	T-40859	James R. Craig	150.00	Tucannon
CRF	8/24/2014	C-30636	Relocation Costs	O-40322	Margaret Baricevic	150.00	Back of the Bus
CRF	9/24/2014	C-30636	Relocation Costs	T-40028	Abel Borg	300.00	RB Creed
CRF	9/24/2014	C-30636	Relocation Costs	O-28594	Mr. & Mrs. R. J. Bennett	300.00	Bridle Beauty
CRF	9/24/2014	C-30636	Relocation Costs	O-40322	Margaret Baricevic	300.00	Back of the Bus
CRF	9/25/2014	C-30636	Relocation Costs	T-39888	Bill Patterson	300.00	Go See Dicky
CRF	9/27/2014	C-30636	Relocation Costs	T-35571	Bryce Gale	300.00	Marv
CRF	9/27/2014	C-30636	Relocation Costs	T-35571	Bryce Gale	300.00	Smarty Ed
CRF	9/27/2014	C-30636	Relocation Costs	T-37206	W. R. Whitehouse	150.00	A P Phantom
CRF	9/27/2014	C-30636	Relocation Costs	T-35571	Bryce Gale	300.00	Paiute Trail
CRF	9/27/2014	C-30636	Relocation Costs	T-37206	W. R. Whitehouse	300.00	Little Linda
CRF	9/27/2014	C-30636	Relocation Costs	O-40322	Margaret Baricevic	300.00	B B's Quick Action
CRF	9/28/2014	C-30636	Relocation Costs	T-37206	W. R. Whitehouse	150.00	Buck's Tornado
CRF	9/28/2014	C-30636	Relocation Costs	T-35571	Bryce Gale	300.00	Northern Torpedo
CRF	9/28/2014	C-30636	Relocation Costs	T-35571	Bryce Gale	300.00	Lucky Got Even
CRF	10/3/2014	C-30636	Relocation Costs	T-40325	Ken M. Danyluk	300.00	Sir James MHF
CRF	10/3/2014	C-30636	Relocation Costs	T-40325	Ken M. Danyluk	300.00	Dartyn Kriss SWA
CRF	10/3/2014	C-30636	Relocation Costs	T-35571	Bryce Gale	300.00	Own It
CRF	10/4/2014	C-30636	Relocation Costs	T-40325	Ken M. Danyluk	300.00	Otylia SWA
CRF	10/4/2014	C-30636	Relocation Costs	T-35571	Bryce Gale	150.00	Smarty Ed
CRF	10/4/2014	C-30636	Relocation Costs	T-40028	Abel Borg	300.00	RB Hot Buns
CRF	10/4/2014	C-30636	Relocation Costs	O-10150	Allen J. Aldrich	150.00	Bag's of Fun
CRF	10/5/2014	C-30636	Relocation Costs	T-40325	Ken M. Danyluk	300.00	TM Maddamee
CRF	10/5/2014	C-30636	Relocation Costs	T-40325	Ken M. Danyluk	150.00	Dartyn Kriss SWA
CRF	10/5/2014	C-30636	Relocation Costs	T-40325	Ken M. Danyluk	300.00	Kellora SWA
CRF	10/5/2014	C-30636	Relocation Costs	T-40325	Ken M. Danyluk	150.00	Sir James MHF
CRF	10/5/2014	C-30636	Relocation Costs	T-35571	Bryce Gale	150.00	Lucky Got Even
CRF	10/8/2014	C-30636	Relocation Costs	T-37505	Jeff Metz	300.00	Forte Feroce
CRF	10/8/2014	C-30636	Relocation Costs	T-37505	Jeff Metz	450.00	English Kitty
CRF	10/8/2014	C-30636	Relocation Costs	T-37505	Jeff Metz	300.00	Anytime
CRF	10/8/2014	C-30636	Relocation Costs	T-37505	Jeff Metz	300.00	Oldtimers Vision
CRF	10/8/2014	C-30636	Relocation Costs	T-37505	Jeff Metz	300.00	Tax Enough
CRF	10/8/2014	C-30636	Relocation Costs	O-38878	Timothy Francis O'Leary	450.00	Jessie Was Mine
CRF	10/8/2014	C-30636	Relocation Costs	O-35609	Jack R. Hibard	300.00	Spa City Lover
CRF	10/8/2014	C-30636	Relocation Costs	O-30238	Michael J. Riley	300.00	Ranger Marini
CRF	10/8/2014	C-30636	Relocation Costs	O-30308	Brice H. Underdahl	300.00	Sogn
CRF	10/8/2014	C-30636	Relocation Costs	O-34649	Andy M. Spitalny	300.00	Amp and Adrenalin
CRF	10/8/2014	C-30636	Relocation Costs	O-39978	Kings River Ranch	300.00	Come On Fire
CRF	10/8/2014	C-30636	Relocation Costs	O-39938	John W. Pendergast	300.00	Tribal Gal
CRF	10/8/2014	C-30636	Relocation Costs	O-40578	Tony Citarrella or Rich Manoogian	450.00	Go Go Gracie
CRF	10/8/2014	C-30636	Relocation Costs	O-39296	Ben Bryan or Ralph Clark	300.00	Big Swig
CRF	10/8/2014	C-30636	Relocation Costs	O-11741	Peter Redekop B.C. Ltd.	300.00	Alert in Class
CRF	10/8/2014	C-30636	Relocation Costs	O-31744	Mr. & Mrs. Larry D. Williams	300.00	Lumberman's Arch
CRF	10/8/2014	C-30636	Relocation Costs	O-31744	Mr. & Mrs. Larry D. Williams	300.00	Can Can Babe
CRF	10/9/2014	C-30636	Relocation Costs	T-39888	Bill Patterson	150.00	Go See Dicky
CRF	10/10/2014	C-30636	Relocation Costs	O-29477	Jim Schleimer	300.00	Djets Son
CRF	10/10/2014	C-30636	Relocation Costs	O-40101	Quarter Moon Ranch	300.00	RB Moose
CRF	10/10/2014	C-30636	Relocation Costs	O-40101	Quarter Moon Ranch	300.00	MS Dixie
CRF	10/11/2014	C-30636	Relocation Costs	T-40028	Abel Borg	150.00	RB Hot Buns
CRF	10/11/2014	C-30636	Relocation Costs	T-40325	Ken M. Danyluk	150.00	Otylia SWA
CRF	10/11/2014	C-30636	Relocation Costs	T-37401	Frank Lucarelli	150.00	Kenai King
CRF	10/11/2014	C-30636	Relocation Costs	T-35571	Bryce Gale	150.00	Paiute Trail
CRF	10/11/2014	C-30636	Relocation Costs	T-35571	Bryce Gale	150.00	Northern Torpedo
CRF	10/11/2014	C-30636	Relocation Costs	T-37505	Jeff Metz	150.00	Tax Enough
CRF	10/12/2014	C-30636	Relocation Costs	T-40325	Ken M. Danyluk	150.00	TM Maddamee
CRF	10/12/2014	C-30636	Relocation Costs	T-40325	Ken M. Danyluk	300.00	Lil Rich Girl

Transaction Type Report
For Types: RE
From 01/01/2014 To 01/27/2015
Facilities: CARF

Jan 27, 2015 11:32 AM
Page 5 of 5

CARF

Fac.	Date	From	Account Name	To	Account Name	Amount	Memo
CRF	10/15/2014	C-30636	Relocation Costs	T-40325	Ken M. Danyluk	300.00	RV Roulette
CRF	10/15/2014	C-30636	Relocation Costs	O-40645	Abdulghani A. Abdulghani	300.00	Sand Legend
CRF	11/17/2014	C-30636	Relocation Costs	T-37505	Jeff Metz	150.00	Anytime
CRF	11/18/2014	C-30636	Relocation Costs	T-29270	Rhonda B. Davis	150.00	Shockher Toppher
CRF	11/18/2014	C-30636	Relocation Costs	T-40028	Abel Borg	150.00	Whadda QT
CRF	11/18/2014	C-30636	Relocation Costs	T-35571	Bryce Gale	150.00	Own It
CRF	11/18/2014	C-30636	Relocation Costs	T-35571	Bryce Gale	150.00	Marv
						58,650.00	
Grand Total						58,650.00	

Trainer Start Incentive - Pleasanton 2014 (12 days of racing)

Horseman	2013 Entries	2014 Entries	% Change	2013 Starts	2014 Starts	% Change	Paid
Hollendorfer, Jerry	79	45	-43%	31	27	-13%	\$1,000.00
Bonde, Jeff	40	44	10%	23	25	9%	\$1,000.00
McCanna, Tim	21	34	62%	10	17	70%	\$1,000.00
Moger, Jr., Ed	30	24	-20%	13	17	31%	\$1,000.00
Morey, William E.	20	31	55%	12	17	42%	\$1,000.00
Sherman, Steve M.	23	19	-17%	16	16	0%	\$1,000.00
DeLima, Clifford	29	22	-24%	20	15	-25%	\$1,000.00
Eaton, Terri	27	19	-30%	20	13	-35%	\$1,000.00
Delia, William	16	17	6%	10	12	20%	\$1,000.00
DiLaura, Sam	13	14	8%	10	11	10%	\$1,000.00
Kasmerski, Len	6	20	233%	6	11	83%	\$1,000.00
Kenney, Ryan	9	23	156%	7	11	57%	\$1,000.00
Ledezma, Sergio	17	17	0%	11	11	0%	\$1,000.00
Trujillo, Victor M.	19	32	68%	13	11	-15%	\$1,000.00
DeMarco, Anthony	0	16	NA	0	10	NA	\$1,000.00
Paldanius, Sheldon W.	15	23	53%	7	10	43%	\$1,000.00
Specht, Steven	3	14	367%	2	10	400%	\$1,000.00
Mason, Lloyd C.	17	13	-24%	12	9	-25%	\$500.00
Metz, Jeffrey	0	14	NA	0	9	NA	\$500.00
Talbot, Michael	6	12	100%	4	9	125%	\$500.00
Bellasis, Tim	9	16	78%	6	8	33%	\$500.00
Dillenbeck, Bruce	4	9	125%	2	8	300%	\$500.00
Evans, Holly	6	9	50%	5	8	60%	\$500.00
Houle, Natalie	1	14	1300%	1	8	700%	\$500.00
Jauregui, O. J.	14	16	14%	8	8	0%	\$500.00
Knight, Terry	12	18	50%	5	8	60%	\$500.00
Kruljac, J. Eric	12	16	33%	10	8	-20%	\$500.00
March, Rhoda	6	8	33%	3	8	167%	\$500.00
Martin, John F.	23	24	4%	18	8	-56%	\$500.00
Mathis, Andy	18	15	-17%	12	8	-33%	\$500.00
Smith, Roxanne	0	11	NA	0	8	NA	\$500.00
Thomas, Jamey R.	5	12	140%	2	8	300%	\$500.00
Aguilar, Jacob Garcia	1	7	600%	1	7	600%	\$500.00
Greiner, Gary	7	15	114%	5	7	40%	\$500.00
Josephson, Jedd B.	7	9	29%	5	7	40%	\$500.00
McLean, Bill	18	14	-22%	10	7	-30%	\$500.00
Morey, Jr., William J.	18	12	-33%	13	7	-46%	\$500.00
Morgan, Dan	4	7	75%	4	7	75%	\$500.00
Raymond, Dale T.	2	10	400%	1	7	600%	\$500.00
Anderson, John E.	2	8	300%	2	6	200%	\$500.00
Miller, Quentin B.	0	11	NA	0	6	NA	\$500.00
Naranjo, Salvador	12	11	-8%	8	6	-25%	\$500.00
Paszkeicz, Alex	11	10	-9%	5	6	20%	\$500.00
Amescua, Rene	11	15	36%	5	5	0%	\$500.00
Cox, William B.	9	11	22%	5	5	0%	\$500.00
Davis, Ronda B.	0	8	NA	0	5	NA	\$500.00
Howey, Quinn	10	17	70%	6	5	-17%	\$500.00
Lage, Armando	9	8	-11%	3	5	67%	\$500.00
Lenzini, Michael	4	10	150%	3	5	67%	\$500.00
McDaniel, Wendell L.	0	7	NA	0	5	NA	\$500.00
McDonald, Melanie W.	2	10	400%	2	5	150%	\$500.00
Meier, Monty R.	10	9	-10%	8	5	-38%	\$500.00
Miyadi, Steven	17	7	-59%	7	5	-29%	\$500.00
Preciado, Guillermo	19	10	-47%	12	5	-58%	\$500.00
Wells, Gordon	5	11	120%	2	5	150%	\$500.00
Wright, Blaine D.	12	8	-33%	2	5	150%	\$500.00
Total	690	866	26%	408	505	24%	\$36,500.00

Trainer Start Incentive - Cal-Expo 2014 (7 days of racing)

Horseman	2013 Entries	2014 Entries	% Change	2013 Starts	2014 Starts	% Change	Paid
Victor M. Trujillo	7	28	300%	6	15	150%	\$1,500.00
Jeffrey Metz	0	22	NA	0	13	NA	\$1,500.00
Gil Matos	14	14	0%	10	11	10%	\$1,500.00
Jerry Hollendorfer	25	16	-36%	15	11	-27%	\$1,500.00
John F. Martin	18	23	28%	8	9	13%	\$800.00
Steve M. Sherman	25	25	0%	11	9	-18%	\$800.00
Gary Greiner	2	13	550%	2	8	300%	\$800.00
Jeff Bonde	8	9	13%	6	8	33%	\$800.00
William E. Morey	18	19	6%	11	8	-27%	\$800.00
Guillermo Preciado	9	12	33%	6	7	17%	\$800.00
Jamey R. Thomas	7	15	114%	6	7	17%	\$800.00
Quinn Howey	18	15	-17%	12	7	-42%	\$800.00
Salvador Naranjo	9	7	-22%	6	7	17%	\$800.00
Bill McLean	11	9	-18%	5	6	20%	\$800.00
Bruce Dillenbeck	12	10	-17%	6	6	0%	\$800.00
Steven Miyadi	14	7	-50%	5	6	20%	\$800.00
William J. Nolan	12	9	-25%	9	6	-33%	\$800.00
Anthony DeMarco	3	5	67%	2	5	150%	\$800.00
Dale T. Raymond	5	8	60%	5	5	0%	\$800.00
Doug Utley	2	6	200%	2	5	150%	\$800.00
Ed Moger, Jr.	25	15	-40%	11	5	-55%	\$800.00
Greg C. James	19	12	-37%	4	5	25%	\$800.00
Rene Amescua	12	8	-33%	8	5	-38%	\$800.00
Steven Specht	1	9	800%	1	5	400%	\$800.00
Total	276	316	14%	157	179	14%	\$22,000.00

Trainer Start Incentive - Ferndale 2014 (6 days of racing)

Horseman	2013 Entries	2014 Entries	% Change	2013 Starts	2014 Starts	% Change	Paid
Amescua, Rene	8	10	25%	6	6	0%	\$500.00
Borg, Abel	5	11	120%	3	8	167%	\$500.00
Cantrell, Margie	42	14	-67%	23	11	-52%	\$1,000.00
Craig, James R.	0	43	NA	0	29	NA	\$1,000.00
Greiner, Gary	46	25	-46%	30	14	-53%	\$1,000.00
Hanford, Peggie	10	10	0%	10	8	-20%	\$500.00
Houle, Natalie	0	12	NA	0	10	NA	\$1,000.00
Howey, Quinn	47	52	11%	29	32	10%	\$1,000.00
Lucas, Robert J.	0	10	NA	0	5	NA	\$500.00
McDonald, Melanie W.	6	5	-17%	4	5	25%	\$500.00
McReynolds, Kenneth E.	0	20	NA	0	14	NA	\$1,000.00
Molinaro, Kent R.	4	7	75%	1	5	400%	\$500.00
Morey, William E.	0	5	NA	0	5	NA	\$500.00
Naranjo, Salvador	9	11	22%	4	6	50%	\$500.00
Nolan, Ken J.	26	10	-62%	13	8	-38%	\$500.00
Parker, Morris F.	22	11	-50%	20	10	-50%	\$1,000.00
Preciado, Guillermo	0	10	NA	0	6	NA	\$500.00
Shelley, Helen	32	29	-9%	20	23	15%	\$1,000.00
Skinner, Diana L.	19	23	21%	16	14	-13%	\$1,000.00
Towell, Bruce	16	14	-13%	14	12	-14%	\$1,000.00
Whitehouse, W. R.	23	13	-43%	14	8	-43%	\$500.00
Total	315	345	10%	207	239	15%	\$15,500.00

Trainer Start Incentive - Stockton 2014 (6 days of racing)

Horseman	2013 Entries	2014 Entries	% Change	2013 Starts	2014 Starts	% Change	Paid
Naranjo, Salvador	10	19	90%	4	11	175%	\$1,000.00
Matos, Gill	10	13	30%	6	9	50%	\$500.00
Preciado, Guillermo	17	18	6%	12	9	-25%	\$500.00
Eaton, Terri	23	10	-57%	9	8	-11%	\$500.00
Howey, Quinn	8	13	63%	5	8	60%	\$500.00
Thomas, Jamey R.	12	15	25%	2	8	300%	\$500.00
Bellasis, Tim	13	9	-31%	8	6	-25%	\$500.00
Gale, Bryce	0	7	NA	0	6	NA	\$500.00
Hollendorfer, Jerry	10	14	40%	3	6	100%	\$500.00
James, Greg	11	7	-36%	4	6	50%	\$500.00
Mathis, Andy	10	8	-20%	4	6	50%	\$500.00
Raymond, Dale T.	7	9	29%	5	6	20%	\$500.00
Vallejo, Genaro	11	8	-27%	7	6	-14%	\$500.00
Aguilar, Jacob Garcia	0	5	NA	0	5	NA	\$500.00
Bonde, Jeff	5	7	40%	4	5	25%	\$500.00
Cantrell, Margie	2	6	200%	2	5	150%	\$500.00
Martin, John F.	7	8	14%	3	5	67%	\$500.00
Moger, Jr., Ed	6	7	17%	4	5	25%	\$500.00
Morey, William E.	18	18	0%	8	5	-38%	\$500.00
Nolan, Ken J.	1	9	800%	1	5	400%	\$500.00
Nolan, William J.	10	6	-40%	6	5	-17%	\$500.00
Trujillo, Victor M.	8	10	25%	5	5	0%	\$500.00
Whitehouse, W.R.	12	8	-33%	6	5	-17%	\$500.00
Total	211	234	11%	108	145	34%	\$12,000.00

Trainer Start Incentive - Fresno 2014 (9 days of racing)

Horseman	2013 Entries	2014 Entries	% Change	2013 Starts	2014 Starts	% Change	Paid
Martin, John F.	58	48	-17%	28	22	-21%	\$1,000.00
Bonde, Jeff	9	26	189%	6	16	167%	\$1,000.00
Morey, William E.	13	25	92%	4	16	300%	\$1,000.00
Trujillo, Victor M.	13	22	69%	7	15	114%	\$1,000.00
Howey, Quinn	26	23	-12%	10	13	30%	\$1,000.00
Vallejo, Genaro	26	13	-50%	13	13	0%	\$1,000.00
Miranda, Efrain	8	13	63%	5	12	140%	\$1,000.00
Amescua, Rene	29	19	-34%	15	11	-27%	\$1,000.00
Preciado, Guillermo	10	23	130%	8	11	38%	\$1,000.00
Greiner, Gary	20	15	-25%	11	10	-9%	\$1,000.00
Hollendorfer, Jerry	11	13	18%	7	10	43%	\$1,000.00
Paldanius, Sheldon W.	17	19	12%	9	9	0%	\$500.00
Bean, Robert	1	18	1700%	0	8	NA	\$500.00
Naranjo, Salvador	11	15	36%	9	8	-11%	\$500.00
Nolan, William J.	13	7	-46%	8	7	-13%	\$500.00
Raymond, Dale T.	6	10	67%	5	7	40%	\$500.00
Eaton, Terri	9	8	-11%	7	6	-14%	\$500.00
Gale, Bryce	5	8	60%	3	6	100%	\$500.00
Jauregui, O.J.	29	7	-76%	14	6	-57%	\$500.00
Knight, Terry	11	9	-18%	3	6	100%	\$500.00
Lenzini, Michael	22	7	-68%	11	6	-45%	\$500.00
McCanna, Tim	26	12	-54%	9	6	-33%	\$500.00
Perez, Sergio	0	13	NA	0	6	NA	\$500.00
Winick, Debbie	14	9	-36%	9	6	-33%	\$500.00
Cantrell, Margie	2	6	200%	2	5	150%	\$500.00
DeLima, Clifford	10	8	-20%	3	5	67%	\$500.00
Ledezma, Sergio	12	6	-50%	6	5	-17%	\$500.00
Mathis, Andy	0	6	NA	0	5	NA	\$500.00
McLean, Bill	4	8	100%	3	5	67%	\$500.00
Parker, Morris	0	10	NA	0	5	NA	\$500.00
Whitehouse, W.R.	0	11	NA	0	5	NA	\$500.00
Total	415	437	5%	215	271	26%	\$21,000.00

2012 THOROUGHBRED RECRUITMENT

Results of CARF Program to Increase Field Size

The Fair Out-of-State Recruitment Program, administered by the California Authority of Racing Fairs, pays \$300 to every horse that travels 600 or more miles to start on the Northern California Fair Circuit for its first start and an additional \$150 for its second start (\$450 total). A runner making its first start at Ferndale receives \$150 for each of two starts, with another \$150 available if the horse starts again at Stockton and/or Fresno.

- **2012 Total TB Recruitment Costs - \$66,411.71**
 2012 Recruitment at Tracks - \$13,711.71
 2012 TB Relocation Fees Paid - \$50,700.00
 2012 Trainer Incentives - \$2,000.00
 Number of Horses Paid - 149
 Number of TB Starts - 338
 Percentage of Total Horse Population - 11%
- **Number of Starts by Recruited TB Horses, by Fair:**
 Pleasanton - 49 (75% increase from 2011)
 Sacramento - 38
 Santa Rosa - 72 (9% increase from 2011)
 Ferndale - 93
 Stockton - 50
 Fresno - 36
- **Number of TB Starts by State Recruited From:**
 Arizona - 128 (71% increase from 2011)
 Idaho - 96
 Oregon - 56
 Washington - 35
 Utah - 13
 New Mexico - 7
 Nevada - 3
- **Leading Trainers of Recruited Horses (by starts):**
 Don Roberson
 Eugene Burns
 W.R. Whitehouse
 Tim McCanna
 Paul Treasure
 Kenneth McReynolds
 Phil Oviedo
 Mike Chambers

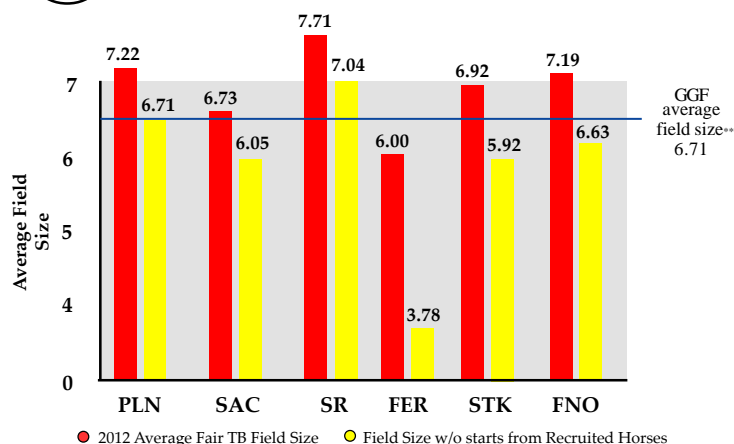
2012 Emerging Breed Relocation Fees - \$4,500 (42 starts)

** During Period 12/26/2011-6/18/2012

*** Cost of Recruitment at Tracks and TB Relocation Fees divided by number of Thoroughbred Starts.

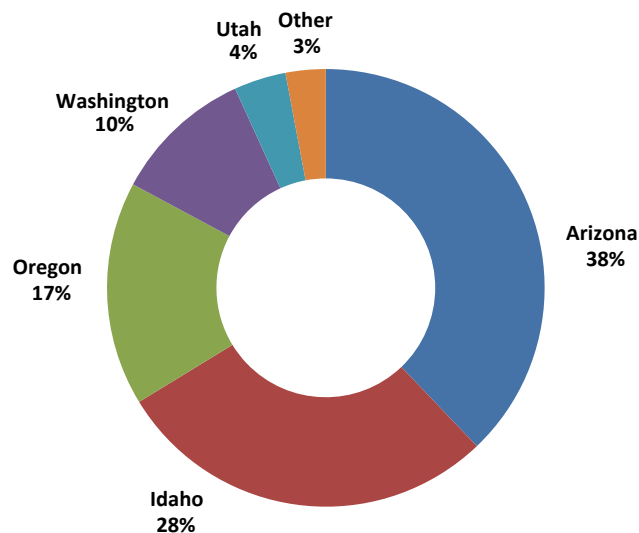
1

Impact of Recruited Horses on 2012 Average Field Size (TB)



2

Where did out-of-state horses come from?



3

What does the Fair Circuit pay on average for each start by an out-of-state horse?

\$196 per starter***

Increased field size is the single largest contributor to increasing ontrack and simulcast handle.

1. Statistics from CHRIMS Runners Report & CARF Out-of-State Starts.
2. Statistics from CARF Paymaster Reports & CFSA Relocation Costs.

2011 THOROUGHBRED RECRUITMENT

Results of CARF Program to Increase Field Size

The Fair Out-of-State Recruitment Program, administered by the California Authority of Racing Fairs, pays \$300 to every horse that travels 600 or more miles to start on the Northern California Fair Circuit for its first start and an additional \$150 for its second start (\$450 total). A runner making its first start at Ferndale receives \$150 for each of two starts, with another \$150 available if the horse starts again at Fresno.

- **2011 Total Recruitment Costs - \$83,110.47**
 2011 Recruitment at Tracks - \$17,410.47
 2011 TB Relocation Fees Paid - \$56,700.00
 2011 Trainer Incentives - \$9,000.00
 Number of Horses Paid - 175
 Number of TB Starts - 328 (15% increase from 2010)
 Percentage of Total Horse Population - 11%
- **Number of Starts by Recruited TB Horses, by Fair:**
 Stockton - 14
 Pleasanton - 28
 Sacramento - 36
 Santa Rosa - 66
 Ferndale - 105 (15% increase from 2010)
 Fresno - 79 (44% increase from 2010)
- **Number of TB Starts by State Recruited From:**
 Oregon - 95
 Washington - 83 (315% increase from 2010)
 Arizona - 75
 Idaho - 47
 Canada - 9
 Minnesota - 7
 Nebraska - 7
 Utah - 4
 Florida - 1
- **Leading Trainers of Recruited Horses (by starts):**
 Tim McCanna
 Nick Lowe
 Bob Beckner
 Miguel Silva
 Charles Essex
 Michael Talbot
 Gary Morris
 Paul Treasure

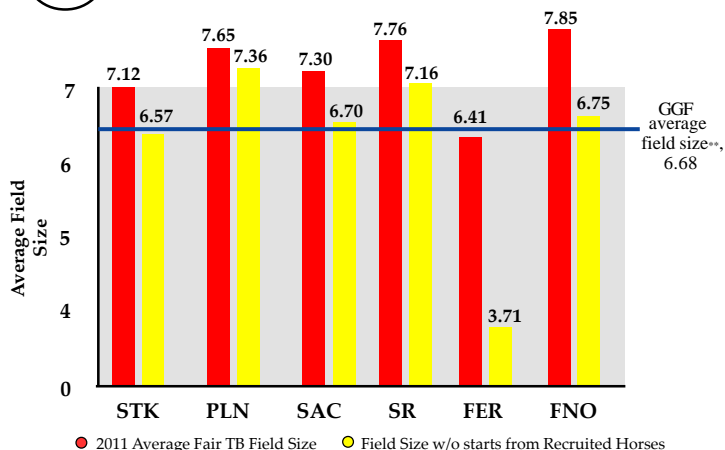
2011 Emerging Breed Relocation Fees - \$750

** During Period 12/26/2010-6/12/2011

*** Cost of Recruitment at Tracks and TB Relocation Fees divided by number of Thoroughbred Starts.

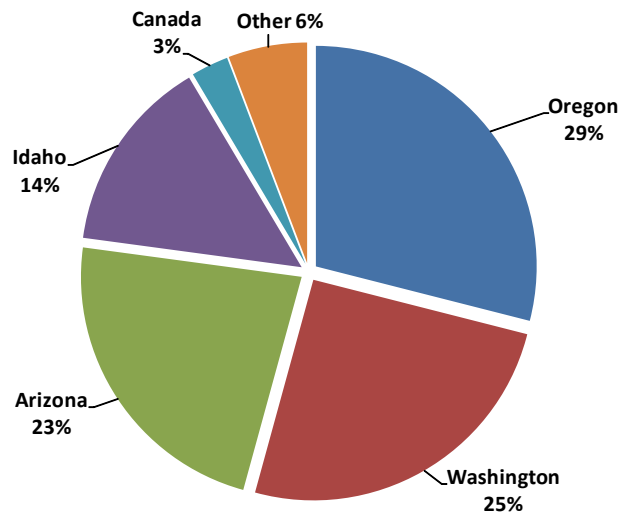
1

Impact of Recruited Horses on 2011 Average Field Size (TB)



2

Where did out-of-state horses come from?



3

What does the Fair Circuit pay on average for each start by an out-of-state horse?

\$253 per starter***

Increased field size is the single largest contributor to increasing ontrack and simulcast handle.

1. Statistics from CHRIMS Runners Report & CARF Out-of-State Starts.
2. Statistics from CARF Paymaster Reports & CFSA Relocation Costs.

2010 THOROUGHBRED RECRUITMENT

Results of CARF Program to Increase Field Size

The Fair Out-of-State Recruitment Program, administered by the California Authority of Racing Fairs, pays \$300 to every horse that travels 600 or more miles to start on the Northern California Fair Circuit for its first start and an additional \$150 for its second start (\$450 total). A runner making its first start at Ferndale receives \$150 for each of two starts, with another \$150 available if the horse starts again at Fresno.

- **2010 Total Recruitment Costs - \$86,808.40***
 2010 Recruitment at Tracks - \$31,108.40
 2010 TB Relocation Fees Paid - \$45,150.00
 2010 Trainer Incentives - \$5,300.00
 Number of Horses Paid - 143
 Number of Starts - 331
 Number of TB Starts - 286
 Percentage of Total Horse Population - 9%
- **Number of Starts by Recruited TB Horses, by Fair:**
 Stockton - 19
 Pleasanton - 35
 Sacramento - 34
 Santa Rosa - 52
 Ferndale - 91
 Fresno - 55
- **Number of TB Starts by State Recruited From:**
 Arizona - 115
 Oregon - 73
 Idaho - 38
 Washington - 20
 Utah - 15
 New Mexico - 11
 Nevada - 4
 Delaware - 4
 Other - 5
- **Leading Trainers of Recruited Horses (by starts):**
 Tim McCanna
 Bob Beckner
 W.R. Whitehouse
 Brenda Estes
 Nick Lowe
 Phil Oviedo

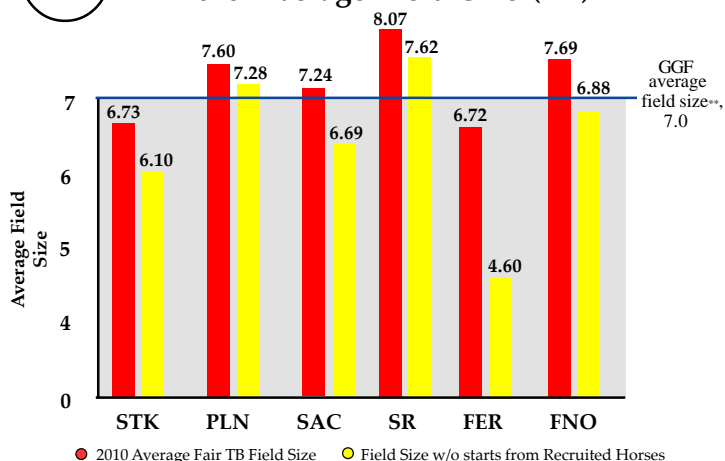
* Emerging Breed Relocation Fees - \$5,250, Does not Include CMC Reimbursement - \$20,000

** During Period 1/1/10-6/20/10

*** Cost of Recruitment at Tracks and TB Relocation Fees divided by number of Thoroughbred Starts.

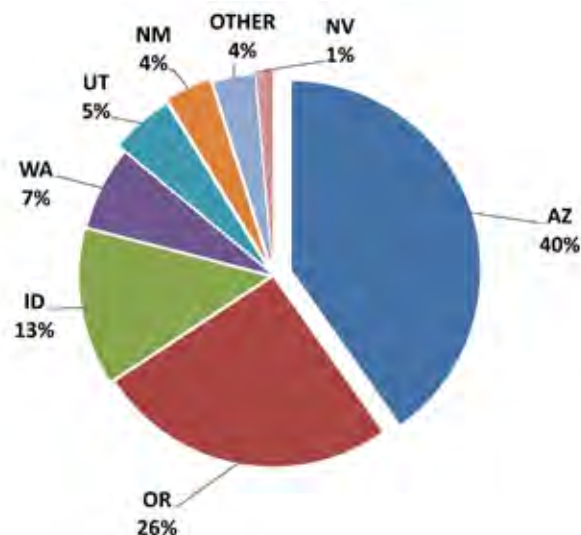
1

Impact of Recruited Horses on 2010 Average Field Size (TB)



2

Where did out-of-state horses come from?



3

What does the Fair Circuit pay on average for each start by an out-of-state horse?

\$266 per starter***

Increased field size is the single largest contributor to increasing ontrack and simulcast handle.

1. Statistics from CHRIMS Runners Report & CARF Out-of-State Starts.
2. Statistics from CARF Paymaster Reports & CFSA Relocation Costs.

2009 THOROUGHBRED RECRUITMENT

Results of CARF Program to Increase Field Size

The Fair Out-of-State Recruitment Program, administered by the California Authority of Racing Fairs, pays \$300 to every horse that travels 600 or more miles to start on the Northern California Fair Circuit for its first start and an additional \$150 for its second start (\$450 total). A runner making its first start at Ferndale receives \$150, with another \$300 available if the horse starts again at another Fair facility.

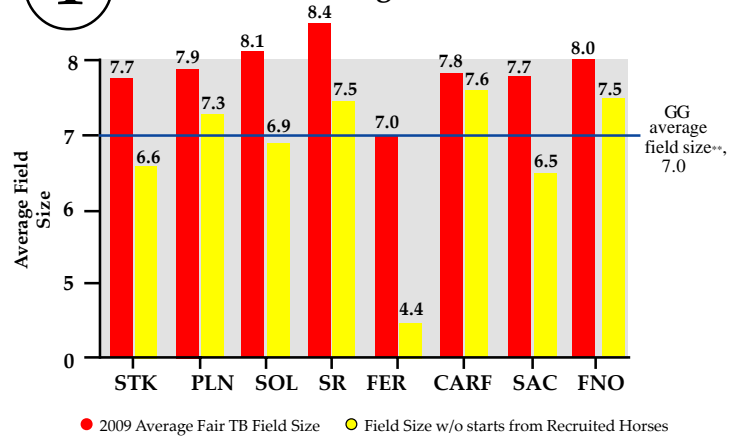
- **2009 Total Recruitment Costs - \$104,776.04***
 2009 Recruitment at Tracks - \$22,176.04
 2009 TB Relocation Fees Paid - \$73,600.00
 2009 Trainer Incentives - \$4,500
 Number of Horses Paid - 217
 Number of Starts - 588
 Percentage of Total Horse Population - 13%
- **Number of Starts by Recruited Horses, by Fair:**
 Stockton - 81
 Pleasanton - 82
 Vallejo - 51
 Santa Rosa - 74
 Ferndale - 111
 CARF at GGF - 43
 Sacramento - 104
 Fresno - 42
- **Number of Starts by State Recruited From:**
 Arizona - 243
 Idaho - 94
 Oregon - 89
 West Virginia - 42
 Washington - 27
 California (Fairplex) - 23
 New Mexico - 21
 Nevada - 12
 Other - 60
- **Leading Trainers of Recruited Horses (by starts):**
 Don Roberson
 Keith Bennett
 Justin Treasure
 Kelly Bainum
 Jason Homer
 W.R. Whitehouse
 Charles Hiatt

* Emerging Breed Relocation Fees - \$4,500, Does not Include CMC Reimbursement - \$25,000

** During Period 1/1/09-6/18/09

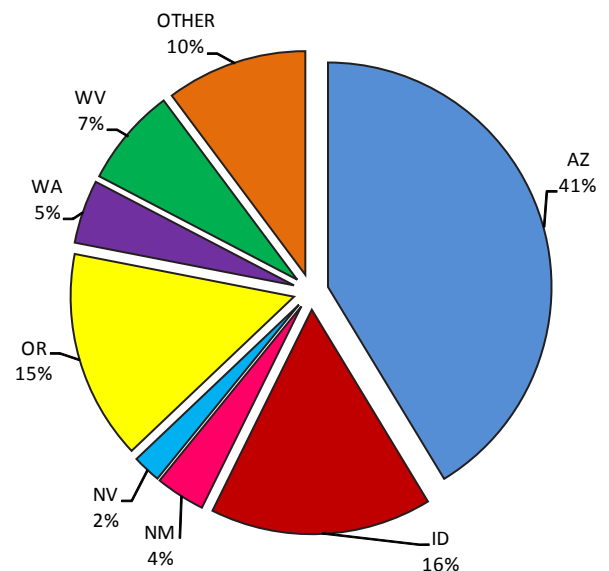
1

Impact of Recruited Horses on 2009 Average Field Size



2

Where did out-of-state horses come from?



3

What does the Fair Circuit pay on average for each start by an out-of-state horse?

\$178 per starter

Increased field size is the single largest contributor to increasing ontrack and simulcast handle.

1. Statistics from CHRIMS Runners Report & CARF Out-of-State Starts.
2. Statistics from CARF Paymaster Reports & CFSA Relocation Costs.